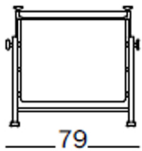
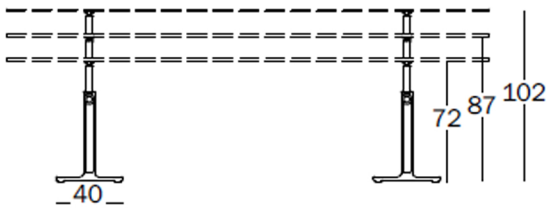


Brut

design konstantin grcic
2017

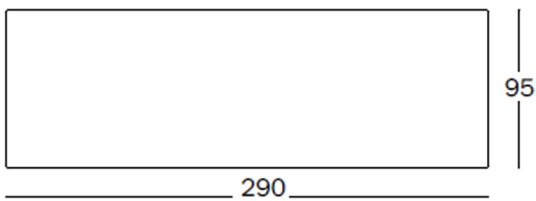
Pair of trestles, adjustable in height.
Material: cast-iron, painted in polyester powder. Tops in veneered oak or in steel plate, electro-galvanized and painted in polyester powder.



Trestle Table.
Pair of trestles adjustable in height in cast iron painted in polyester powder.

TV2530

Frame:
green 5126
grey anthracite 5142
red 5143



Top in veneered oak. Thickness 30 mm.

TV2535

Top in veneered oak, natural

Top in steelplate electro-galvanized and painted polyester powder. Thickness 17 mm.

TV2537

Top: steelplate black

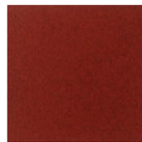
colours



Frame: Anthracite Grey 5142



Frame: Green 5126



Frame: Red 5143



Top: Natural Oak



Top: Black Steel Plate

