



Quietly monumental

Product: w223 Pawson

John Pawson's design combines curved and rectilinear elements to create a quietly monumental volume. Notched cut-outs in the form contribute detail to the lamp's distinctive profile, while also serving the functional purpose of shaping the way the light is cast and creating an entry point for the cable. Each version explores a contrasting interaction of material and light – the lambent potential of marble and the reflective quality of aluminium.

Design: John Pawson, 2022

Features: Artisanal marble
Metallurgic mastery

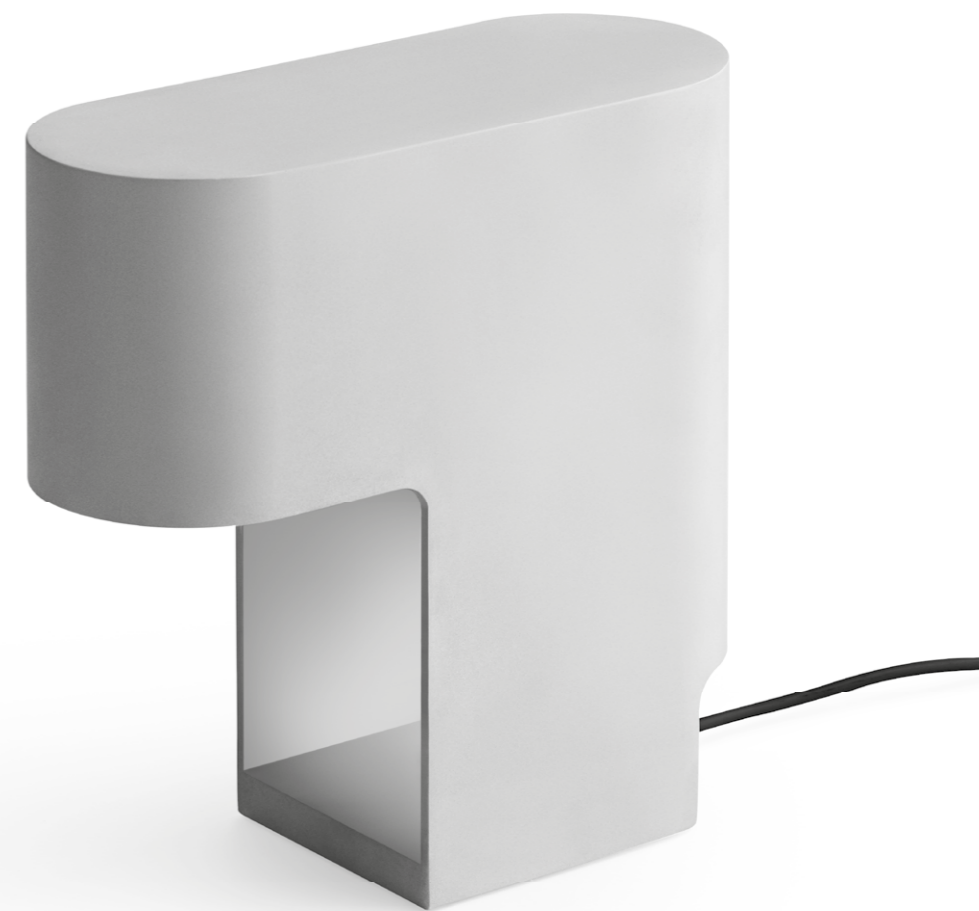


Artisanal marble

Solid marble of the finest quality, skillfully crafted by artisans with profound experience and technical know-how, gives w223 Pawson remarkable heft and beauty. In itself, w223 Pawson is a stunning piece; once turned on, its light further enhances the marble's intrinsic luminosity.

Metallurgic mastery

The aluminium version of w223 Pawson is masterly and seamlessly crafted, featuring a striking, matte exterior and a hollow interior, for a fascinating play between shadows and reflections.



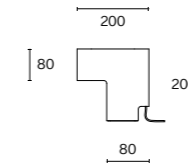
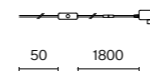
Technical information

Physical	Material	Lamp body: marble/aluminium Lens: polycarbonate Dimmer housing on cord: ABS
	Colour	Article-specific information
	Net weight	Article-specific information
	Operation	Dimmer switch on cord
	IP rating	20
LED	Light source	Integrated LED
	Lifetime expectancy	L80 / 50,000h
	Colour temperature (CCT)	2700K
	Colour rendering index (CRI)	≥ 95
	Luminous flux	82lm
	Efficacy	14lm / W
	Replaceable by a professional	
Optics	Lens	
Electronics	System power	6W
	Voltage	100–240V
	Light control	Dimmable
	Insulation class	III

w223 Pawson marble



w223 Pawson aluminium



Article-specific information

Version	Marble	Aluminium
Net weight	5.1kg	1.2kg
Art. No.	223T14027	223T12027

Latest technical
information online

