



## SWAN™

---

Arne Jacobsen designed the Swan™ as well as the Egg™ for the lobby and lounge areas at the SAS Royal Hotel in Copenhagen in 1958. The commission to design every element of the hotel building as well as the furniture was Jacobsen's grand opportunity to put his theories of integrated design and architecture into practice. In 1958 the Swan was a technologically innovative chair: No straight lines - only curves.



REPUBLIC OF **Fritz Hansen®**

## PRODUCT DESCRIPTION

The shell of the Swan™ is made of polyurethane foam with glass fibre reinforcement. The shell is upholstered with cold cured foam and covered with fabric or leather. The seat carrier consists of a spindle of diameter 28 mm automate steel and an assembly plate of 5 mm steel sheet. The individual parts are welded and surface treated with matt zinc. The base consists of a satin chromed, swivel centre part of welded steel tubing (diameter 38x2 mm) and a 4-star base in injection moulded aluminium. The leg ferrules are in black-grey synthetic material.

The Swan™ is available in two different heights (standard or + 8 cm/3.1"). Further, the Swan is available with automatic return.

## DESIGN

Arne Jacobsen, 1958.



## ARNE JACOBSEN 1902-1971

The collaboration between Arne Jacobsen and Fritz Hansen dates back to 1934. It was not until 1952 however that the team got its breakthrough with the Anti™. It was succeeded by Series 7™ in 1955, thereby enabling both Jacobsen and Fritz Hansen to write their names into furniture history.

Arne Jacobsen was incredibly productive, both as an architect and a designer. At the end of the 1950s he designed the SAS Royal Hotel in Copenhagen, also designing the Egg™, the Swan™, the Swan Sofa™ and Series 3300™ for the same project.



## UPHOLSTERY

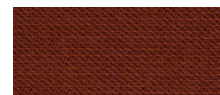
The Swan™ comes upholstered in both fabric and leather. The upholstery is available in the following selection of fabrics and leathers:

### Fritz Hansen Colours:

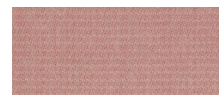
The Fritz Hansen Colours are created exclusively by Republic of Fritz Hansen's own design team and consist of serene pale pink, warm and earthy terracotta orange and finally deep ocean blue.



**BLUE**  
FABRIC: FH 6001



**ORANGE**  
FABRIC: FH 5901



**PINK**  
FABRIC: FH 5801

### Fabrics:

Fame, Diablo, Capture, Comfort, Divina, Divina Melange, Divina MD, Fiord, Hallingdal, Steelcut, Steelcut Trio, Sunniva, Tonus.

### Leathers:

Basic, Classic, Rustic, Natural, White, Optical white, Elegance, Sense.



## WARRANTY

A five-year warranty against manufacturing defects in standard products (materials and workmanship). Wear, tear and damage to the product are not covered under this warranty. Claims from end users under the guarantee must be submitted to the vendor from whom the product was purchased. All measurements are indicative.

### STANDARD WARRANTY:

5 years

### MY REPUBLIC EXTENDED WARRANTY:

5 years: Fabric, Swivel, Automatic return, Leather: Basic.

10 years: Base, Shell, Leather: Classic, Rustic, Natural, White, Optical white, Elegance, Sense.

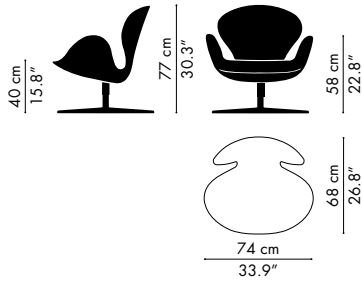
To obtain an extended warranty offered through My Republic the products should be registered online. Go to [www.fritzhenzen.com/myrepublic](http://www.fritzhenzen.com/myrepublic) to register.



## VARIATIONS & DIMENSIONS

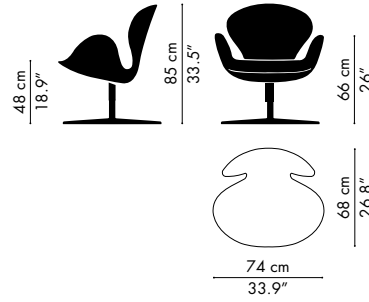
3320

THE MEASUREMENTS CAN VARY +/- 5 %



3320 + 8 CM/3.1"

THE MEASUREMENTS CAN VARY +/- 5 %



## ENVIRONMENTAL PRODUCT INFORMATION

Lounge chair for lounge and waiting areas and private use.

### MATERIALS

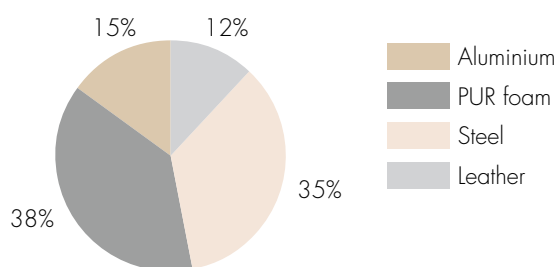
The shell is made of polyurethane (PUR) foam with embedded steel frame and glass fibre as reinforcement. The foam for the upholstery and the seat cushion is cold cured PUR foam.

The seat carrier consists of a steel spindle and an assembly steel plate. The base consists of a satin polished chromed steel tube which is connected to a base in aluminium through a cone assembly. Toes are made of polyamide.

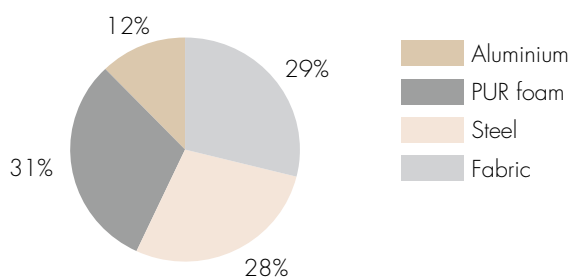
#### Materials in %

The below figures illustrate the weight allocation between the different materials used. Items with a weight <1% of the total product weight are not included in the figures below. The upholstery percentage may vary depending on the upholstery type.

Model 3320 w. leather upholstery:



Model 3320 w. fabric upholstery:



### PACKAGING MATERIAL

The chair is covered with a plastic bag and shipped and protected in cardboard. All packaging material can be recycled

### REPAIR, DISPOSAL AND REUSE

In case of repair and disposal the chair can be disassembled into two parts (shell and base). The plastic shell, aluminium base and other metal parts can be recycled. Check local regulations for recycling in your area and whether there is potential for reuse.

## MANUFACTURING PROCESSES

### Suppliers

Before Fritz Hansen enters into a cooperation with a supplier, their environmental stance is examined as part of the company's quality and environmental management systems.

### Chrome surface treatment

Fritz Hansen uses both trivalent chromium (chrome 3) and hexavalent chromium (chrome 6) for chromium plating. Fritz Hansen will convert to solely using trivalent chromium (chrome 3) when the capacity in the industry allows it.

### Metals

Production scrap (steel and aluminium) is collected for recycling.

### Foam

Remnants from foam production are granulated, wherever possible, for recycling.

### Plastic

Plastic components are identified with a recycling code whenever possible to facilitate the return of the materials to the recycling stream.

## MANAGEMENT SYSTEMS

### Environmental Systems

We are aware of our environmental responsibilities. Therefore, in the autumn of 2004 Fritz Hansen obtained the ISO 14001 certification in the environmental management system. The certification is a guarantee to our customers and the authorities that we comply with the requirements of the ISO 14001:2015 standard.

### Quality System

Fritz Hansen is also certified according to the quality system ISO 9001:2015.

### Employee Health and Safety

Fritz Hansen aims at meeting or exceeding OSHA standards.

## ENVIRONMENTAL PRODUCT CERTIFICATION

### GreenGuard

The Swan™ chair is GreenGuard Gold certified. GreenGuard certification is an emission certification for indoor air quality. Products with ultra-low-emitting materials can achieve GreenGuard Gold.

## LONG LIFETIME

A long lifetime of a piece of furniture is an important environmental factor. Fritz Hansen aims to obtain a long lifetime through timeless design and strict requirements for strength and durability. The chair complies with the requirements for EN 15373 L1, safety, strength, durability and stability for non domestic seating, general use.

## MORE INFORMATION

Please visit [www.fritzhanzen.com](http://www.fritzhanzen.com) for additional environmental information and to download our Perspective on Sustainability & Corporate Environmental Policy.



## PRODUCT DESCRIPTION

Arne Jacobsen designed the Egg™ for the lobby and reception areas in the SAS Royal Hotel, in Copenhagen. The commission to design every element of the hotel building as well as the furniture was Jacobsen's grand opportunity to put his theories of integrated design and architecture into practice. The Egg is one of the triumphs of Jacobsen's total design - a sculptural contrast to the building's almost exclusively vertical and horizontal surfaces. Like a sculptor, Jacobsen strove to find the shell's perfect shape in clay at home in his own garage. Because of the unique shape, the Egg guarantees a bit of privacy in otherwise public spaces and the Egg - with or without footstool - is ideal for lounge and waiting areas as well as the home.

The shell of the Egg is made of polyurethane foam with glass fibre reinforcement. The foam for the upholstery and the seat cushion is cold cured polyurethane foam. The shell has an adjustable tilt fitting which can be adjusted to the weight of the individual user. The tilt mechanism is made of steel sheet, steel tubing and spring steel. The adjustment handle is of polished drawn stainless steel. The base consists of a satin-polished swivel centre part of welded steel tubing (dia. 38 x 2 mm), a spindle of dia. 28 mm machining steel and a 4-star base in injection moulded aluminium. The leg ferrules are in black-grey synthetic material.

A matching footstool is available for the chair. The shell of the footstool is made of synthetic material, upholstered with cold-cured foam and covered with fabric or leather. The foam for the upholstery and the seat cushion is cold-cured polyurethane foam. The foot stool is without swivel function. The base is a star-shaped base of satin polished aluminium. The ferrules are moulded black polyamide.

## DESIGN

Arne Jacobsen, 1958.



## ARNE JACOBSEN 1902-1971

The collaboration between Arne Jacobsen and Fritz Hansen dates back to 1934. It was not until 1952 however that the team got its breakthrough with the Ant™. It was succeeded by Series 7™ in 1955, thereby enabling both Jacobsen and Fritz Hansen to write their names into furniture history.

Arne Jacobsen was incredibly productive, both as an architect and a designer. At the end of the 1950s he designed the SAS Royal Hotel in Copenhagen, also designing the Egg™, the Swan™, the Swan Sofa™ and Series 3300™ for the same project.

## UPHOLSTERY

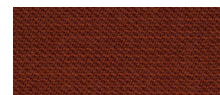
The Egg™ comes upholstered in both fabric and leather. The upholstery is available in the following selection of fabrics and leathers:

### Fritz Hansen Colours:

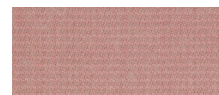
The Fritz Hansen Colours are created exclusively by Republic of Fritz Hansen's own design team and consist of serene pale pink, warm and earthy terracotta orange and finally deep ocean blue.



**BLUE**  
FABRIC: FH 6001



**ORANGE**  
FABRIC: FH 5901



**PINK**  
FABRIC: FH 5801

### Fabrics:

Canvas, Capture, Comfort, Diablo, Divina, Divina Melange, Divina MD, Fame, Fiord, Hallingdal, Steelcut, Steelcut Trio, Sunniva and Tonus.

### Leathers:

Basic, Classic, Rustic, Natural, White, Optical white, Elegance and Sense.



## WARRANTY

A five-year warranty against manufacturing defects in standard products (materials and workmanship). Wear, tear and damage to the product are not covered under this warranty. Claims from end users under the guarantee must be submitted to the vendor from whom the product was purchased. All measurements are indicative.

### STANDARD WARRANTY:

5 years

### MY REPUBLIC EXTENDED WARRANTY:

5 years: Fabric, Tilt, Swivel, Automatic return, Leather: Basic.  
10 years: Base, Shell, Leather: Classic, Rustic, Natural, White, Optical white, Elegance, Sense.

To obtain an extended warranty offered through My Republic the products should be registered online. Go to [www.fritzhenzen.com/myrepublic](http://www.fritzhenzen.com/myrepublic) to register.

CHRISTIANSHAVN



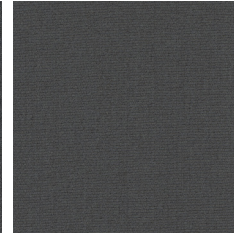
**BLACK UNI**  
FABRIC: CHRISTIANSHAVN 1175



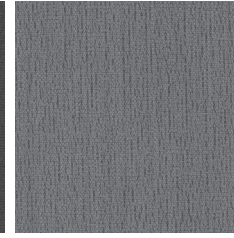
**DARK GREY**  
FABRIC: CHRISTIANSHAVN 1174



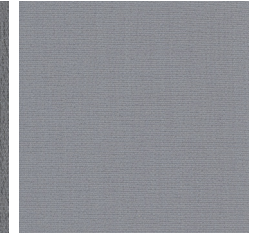
**GREY**  
FABRIC: CHRISTIANSHAVN 1173



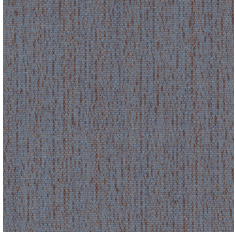
**GREY UNI**  
FABRIC: CHRISTIANSHAVN 1172



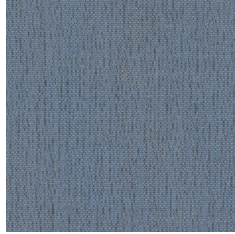
**LIGHT GREY**  
FABRIC: CHRISTIANSHAVN 1171



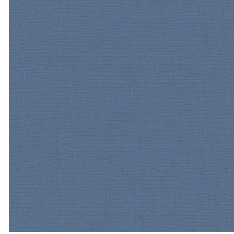
**LIGHT GREY UNI**  
FABRIC: CHRISTIANSHAVN 1170



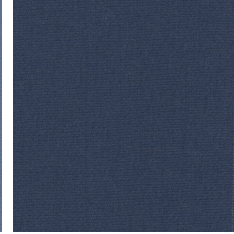
**ORANGE/BLUE**  
FABRIC: CHRISTIANSHAVN 1150



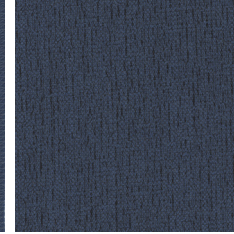
**LIGHT BLUE**  
FABRIC: CHRISTIANSHAVN 1152



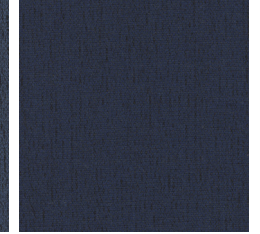
**LIGHT BLUE UNI**  
FABRIC: CHRISTIANSHAVN 1151



**BLUE UNI**  
FABRIC: CHRISTIANSHAVN 1153



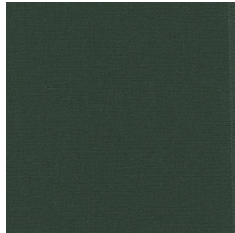
**BLUE**  
FABRIC: CHRISTIANSHAVN 1154



**DARK BLUE**  
FABRIC: CHRISTIANSHAVN 1155



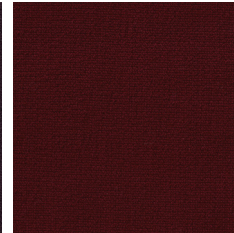
**DARK GREEN**  
FABRIC: CHRISTIANSHAVN 1161



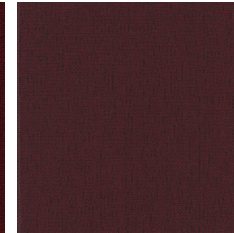
**DARK GREEN UNI**  
FABRIC: CHRISTIANSHAVN 1160



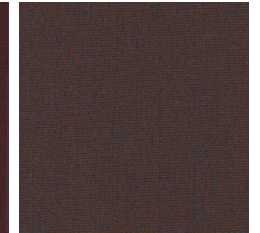
**DARK RED UNI**  
FABRIC: CHRISTIANSHAVN 1142



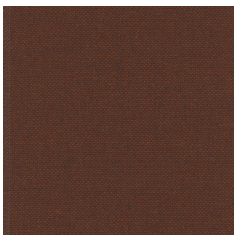
**RED**  
FABRIC: CHRISTIANSHAVN 1141



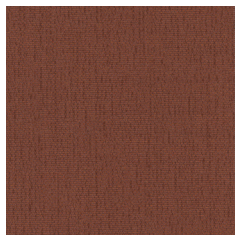
**RED UNI**  
FABRIC: CHRISTIANSHAVN 1140



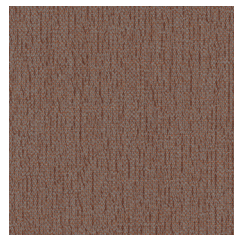
**BLUE/ORANGE**  
FABRIC: CHRISTIANSHAVN 1135



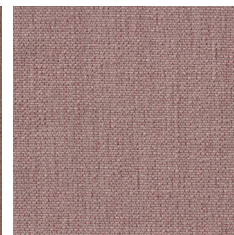
**DARK ORANGE**  
FABRIC: CHRISTIANSHAVN 1134



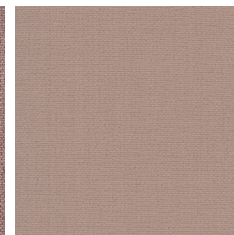
**ORANGE**  
FABRIC: CHRISTIANSHAVN 1133



**BEIGE/ORANGE**  
FABRIC: CHRISTIANSHAVN 1132



**ORANGE/RED**  
FABRIC: CHRISTIANSHAVN 1131



**LIGHT RED UNI**  
FABRIC: CHRISTIANSHAVN 1130



**BEIGE**  
FABRIC: CHRISTIANSHAVN 1121

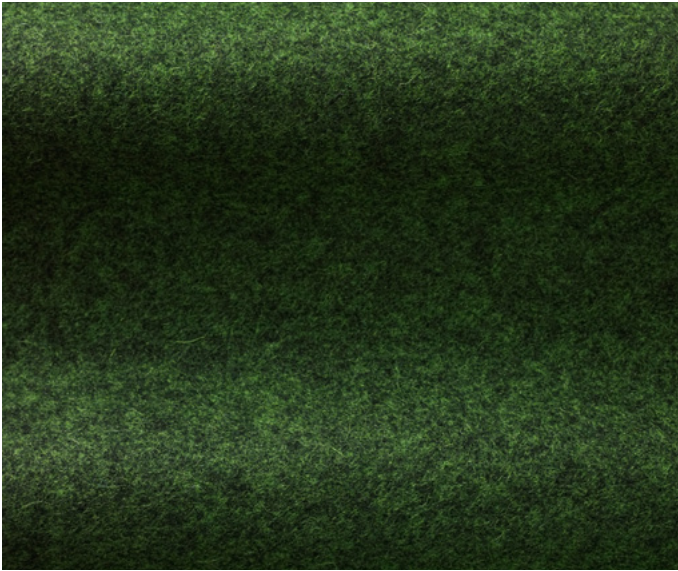


**LIGHT BEIGE**  
FABRIC: CHRISTIANSHAVN 1120



**YELLOW**  
FABRIC: CHRISTIANSHAVN 1110





### **Divina Melange 2**

100% new wool

24 colours

150 cm wide

Design: Finn Sködt MDD AGI

Introduced: 1999

Revised: 2004

## Divina Melange 2

*"Melange upholstery in neon colours."*

*Divina Melange* has been extremely well received by the market. Following on from this success, we are now adding additional colourways.

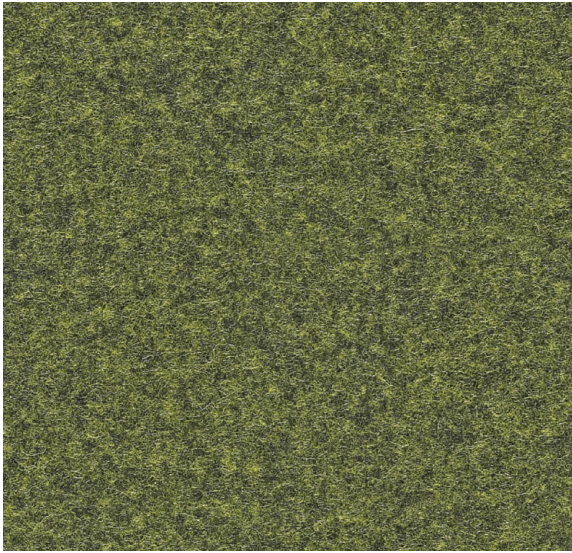
*Divina Melange* is a textile characterised by its lack of texture and nap and consequently the fabric accentuates the dimensions of the furniture, giving prominence to the colours.

Melange means mixture. The existing six grey and beige colourways are produced by mixing varying proportions of either black or brown wool with white wool. The different colours of wool are mixed before the garment is spun.

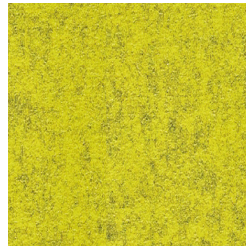
The new colourways have come about by dipping the two base colours in bold, virtually luminous pigments. The result is 18 coloured melanges.

For further information  
[www.kvadrat.dk](http://www.kvadrat.dk)





471



421



971



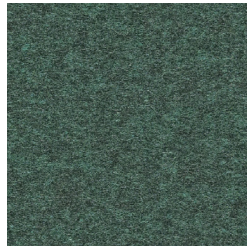
771



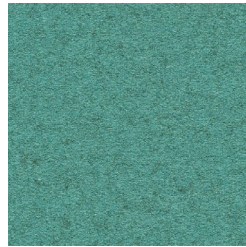
920



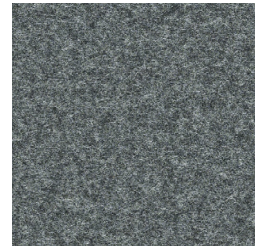
120



871



821



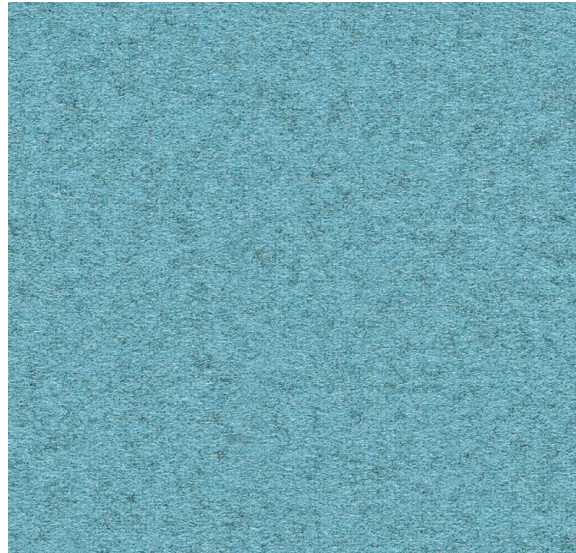
170



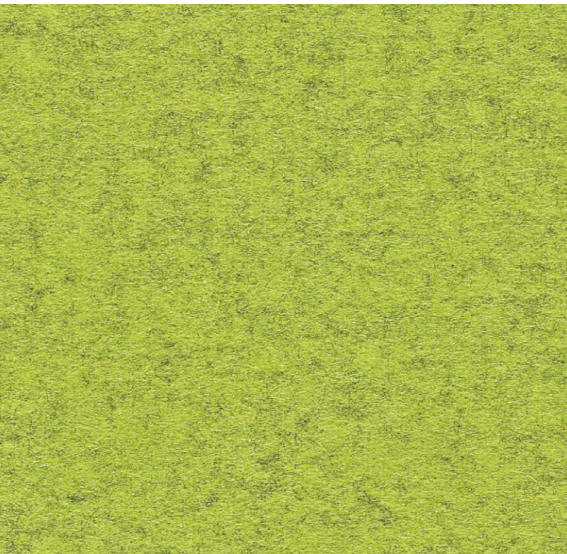
731



180



721

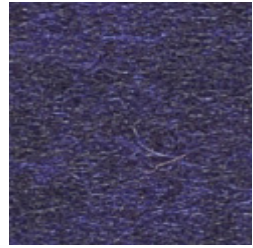


931





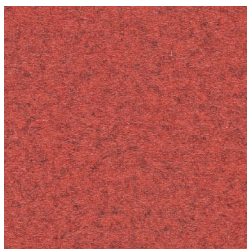
671



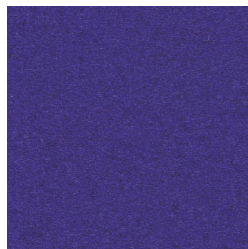
681



220



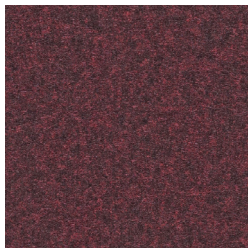
531



631



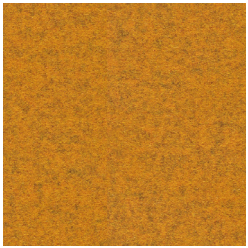
260



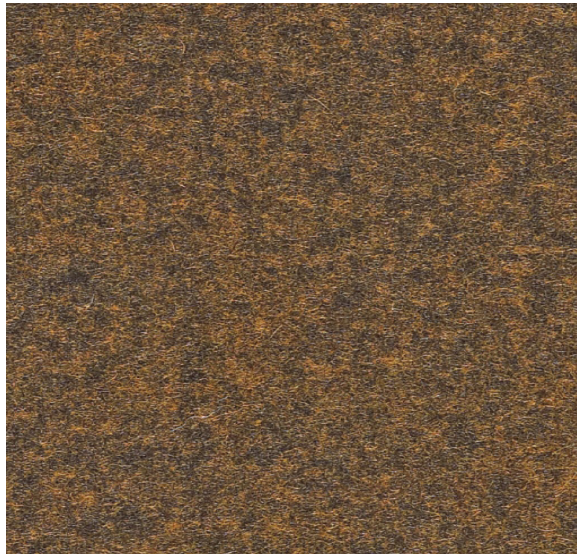
581



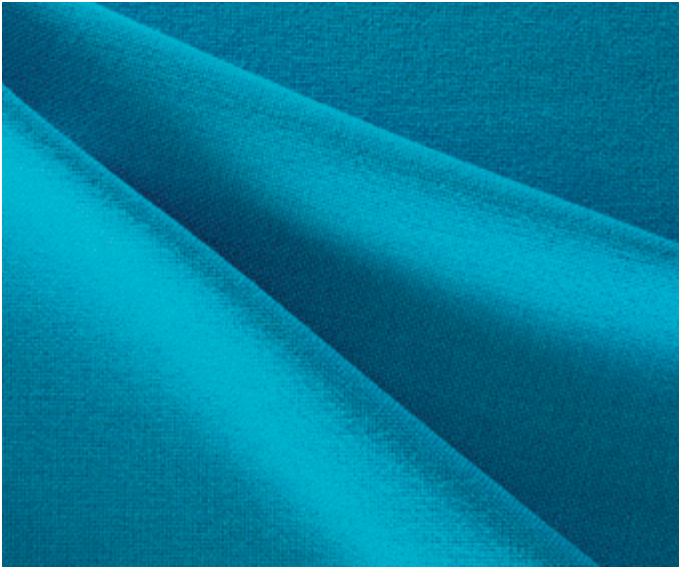
280



521



571



# Hallingdal 65

## Abrasion

Approximately 100.000 Martindale rubs, EN ISO 12947

## Pilling

Note 3, EN ISO 12945

## Lightfastness

Note 5-7, ISO 105-B02

## Flame resistance

AS/NZS 1530.3

AS/NZS 3837

BS 5852 Crib 5

BS5852 part 1

DIN 4102 B2

EN 1021-1/2

IMO FTP Code 2010: Part 8

NF D 60 013

NFPA 260

Önorm B1/Q1

SN 198 898 5.3 with treatment

UNI 9175 1IM

US Cal. Bull. 117 – 2013

No use of brominated flame retardants

## Benefits of wool

Wool is a renewable resource

Wool is very comfortable because of its ability to absorb / give off humidity Wool is flame retardant

Wool is biodegradable

Wool is naturally soil resistant

Wool ages with grace

## Quality benefits

Very good abrasion

Good lightfastness

Flame retardant

## Environmental benefits

Complies with EU Ecolabel

Long life span

No use of AZO dyes, which may split off carcinogenic acrylamines

No use of dyes containing heavy metals

No content of formaldehyde

No use of brominated flame retardants

Biodegradable spinning oil

We adhere to the limits set by the Danish Environmental Protection Agency's "List of Undesirable Substances"

Complies with REACH

## Reduced emissions

Greenguard and Greenguard Gold certified

For further information

kvadrat.dk

## Hallingdal 65

Design: Nanna Ditzel

Type: Upholstery

Composition: 70% new wool, 30% viscose

Yarn type: Stapel

Binding: Plain

Width: 130 cm

Weight: Approximately 795 g/lin.m Repeat: None

Cleaning: Vacuuming and dry cleaning

More info: Maintenance instruction–please see website



10 year warranty  





# Hallingdal 65

Price category 2  
Manufacturer Kvadrat  
Materials 70% New wool, 30% Viscose  
Martindale 100.000  
Lightfastness 7  
Pilling 3



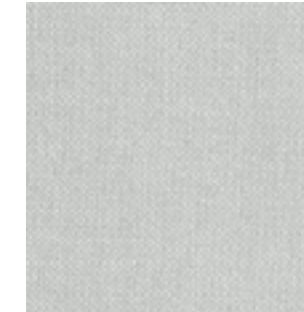
# Hallingdal 65

Price category 2  
Manufacturer Kvadrat  
Materials 70% New wool, 30% Viscose  
Martindale 100.000  
Lightfastness 7  
Pilling 3

## TEXTILE



0100



0103



0110



0113



0116



0123



0126



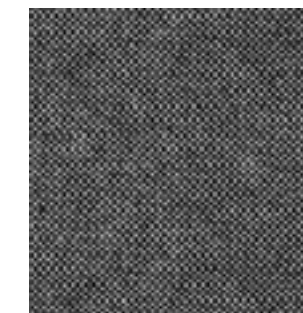
0130



0143



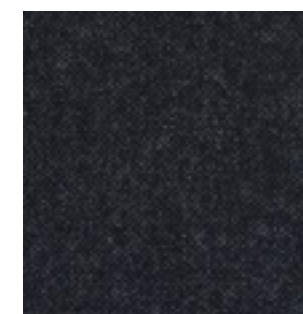
0153



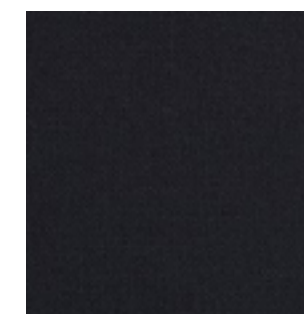
0166



0173



0180



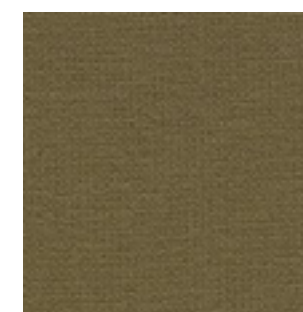
0190



0200



0220



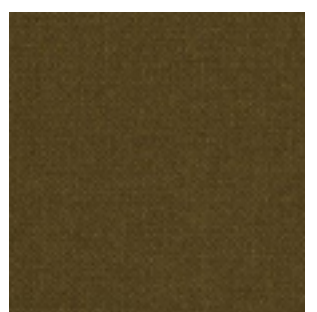
0224



0227



0270



0350



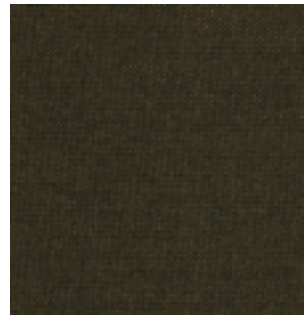
# Hallingdal 65

Price category 2  
Manufacturer Kvadrat  
Materials 70% New wool, 30% Viscose  
Martindale 100.000  
Lightfastness 7  
Pilling 3

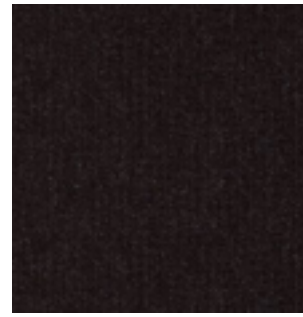
TEXTILE



0368



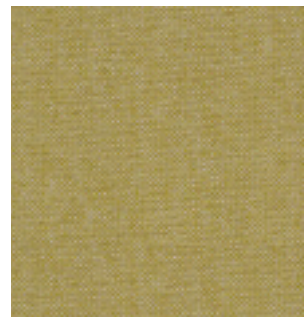
0370



0376



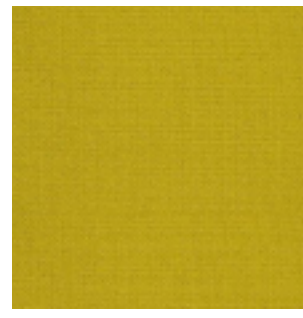
0390



0407



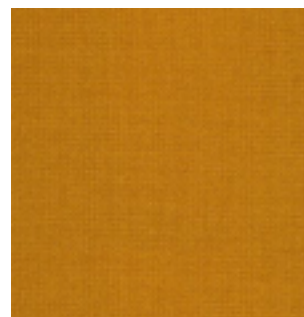
0420



0457



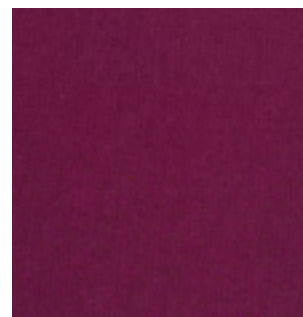
0526



0547



0563



0573



0590



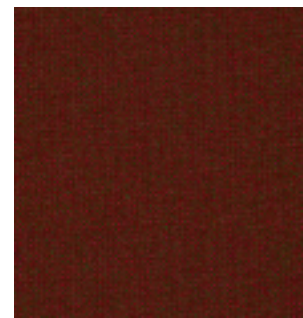
0596



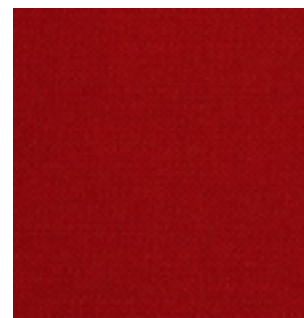
0600



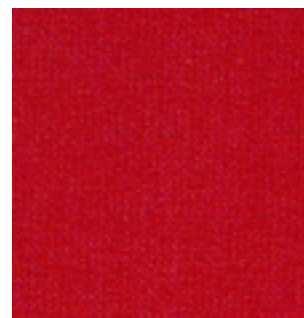
0657



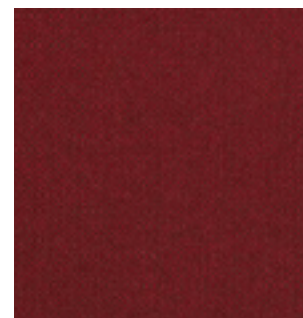
0660



0674



0680



0687



0694

# Hallingdal 65

Price category 2  
Manufacturer Kvadrat  
Materials 70% New wool, 30% Viscose  
Martindale 100.000  
Lightfastness 7  
Pilling 3

TEXTILE



0702



0723



0733



0750



0753



0754



0763



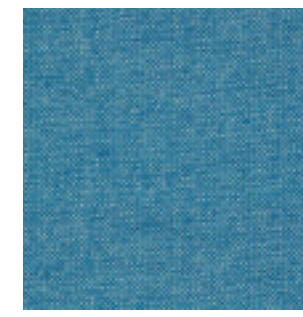
0764



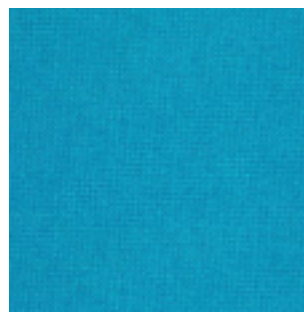
0773



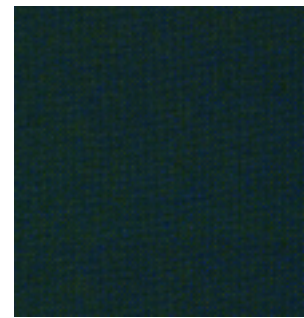
0810



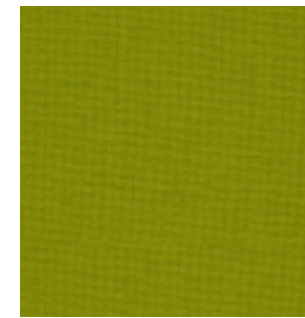
0840



0850



0890



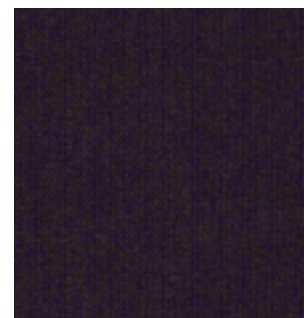
0907



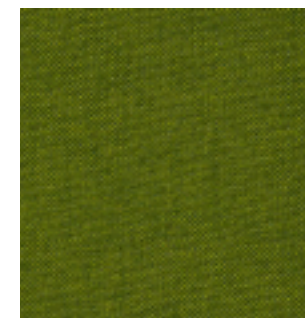
0944



0960



0968



0980