

ARBOUR

PRODUCT FACT SHEET



ARBOUR

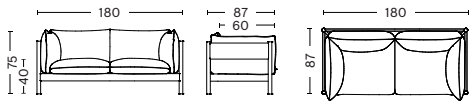
DESIGN BY ANDREAS ENGESVIK & DANIEL RYBAKKEN, 2020

Embodying the concept that design should follow construction, Andreas Engesvik and Daniel Rybakken's Arbour is assembled from separate components that have been independently produced for optimal comfort, quality, and efficiency. Developed to offer a compact and durable sofa with a sustainable profile, the Arbour Sofa features the EU-Ecolabel, with FSC-certified wood and water-based lacquered frame, and EU-Ecolabelled upholsteries for the Eco version. The seat and cushions are made in carefully balanced proportions, with identical side cushions creating a sense of harmony and offering the opportunity for multiple comfortable sitting or lying positions, while the frame creates a strong yet elegant profile with an architectural quality. With its logical construction and uncluttered design language, Arbour fuses its distinctly Scandinavian aesthetics with high comfort and great durability. The Arbour family comprises a two- and three-seater sofa, and the more compact Arbour Club Sofa and Armchair.

HIGHLIGHTS

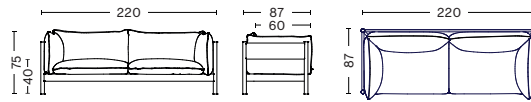
- The Arbour family is available as a two- and three-seater sofa and a Club Sofa and Armchair.
- Arbour is a compact and durable sofa with a sustainable profile.
- The Arbour Eco features the EU-Ecolabel, with FSC-certified wood, water-based lacquered frame and EU-Ecolabelled upholsteries.
- It is built to last, using separate components that can easily be replaced.
- The cushions are made with recycled filling and removeable covers.
- The cushions are secured to the seat with a Loxx button.
- Available in a variety of textiles and frame colours and finishes.
- Suitable for a wide variety of private and public environments.
- Qualified for contract use.

DIMENSIONS



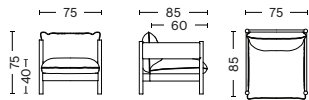
2 SEATER

WIDTH 180 CM | 70.87"
DEPTH 87 CM | 34.3"
HEIGHT 75 CM | 29.5"
SEAT HEIGHT 40 CM | 15.7"
SEAT DEPTH 60 CM | 23.6"



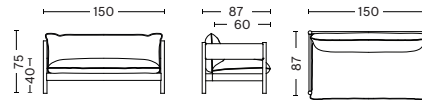
3 SEATER

WIDTH 220 CM | 86.6"
DEPTH 87 CM | 34.3"
HEIGHT 75 CM | 29.5"
SEAT HEIGHT 40 CM | 15.7"
SEAT DEPTH 60 CM | 23.6"



CLUB ARMCHAIR

WIDTH 75 CM | 29.53"
DEPTH 85 CM | 33.46"
HEIGHT 75 CM | 29.5"
SEAT HEIGHT 40 CM | 15.7"
SEAT DEPTH 60 CM | 23.6"



CLUB SOFA

WIDTH 150 CM | 59.06"
DEPTH 87 CM | 34.3"
HEIGHT 75 CM | 29.5"
SEAT HEIGHT 40 CM | 15.7"
SEAT DEPTH 60 CM | 23.6"

MATERIALS

FRAME

FSC-certified wooden frame in solid wood and plywood with elastic webbing. Legs with felt pads.

CUSHIONS

Inner cushions with 50% recycled PE fiber balls, and 50% recycled shredded foam, made from leftover material in production.

COVER

Removable covers in fabric or leather.

OPTIONS

CMHR filling (fire retardant).

SPARE PARTS

INNER CUSHIONS

Seat cushion. Backrest cushion. Armrest cushion.

COVER SET

Seat/backrest/armrest. Seat/backrest.

CONSTRUCTION






Wooden frame of solid wood and veneered side/back support with loose cushions consisting of 50% recycled fiberball from recycled PE and 50% shredded foam.

COUNTRY OF ORIGIN

Lithuania

COLOUR & FINISH

Please note that the colour codes are indicative.

FRAME	FABRICS	ARBOUR ECO EU-ECO LABELLED FABRICS	ARBOUR OTHER FABRICS & LEATHER
OILED WAXED OAK		●	●
OILED WAXED WALNUT		●	●
BLACK WATER-BASED LACQUERED BEECH RAL 9005		●	●
WINE RED WATER-BASED LACQUERED BEECH RAL 3002		●	●
BOTTLE GREEN WATER-BASED LACQUERED BEECH RAL 6007		●	●

Please note that Arbour Club sofa in leather has a matching stitching in the middle of the seat and back cushion.

FABRIC & LEATHER UPHOLSTERY

Please see our Fabric Overview for approved standard fabrics.

[LINK TO OVERVIEW](#)

SUSTAINABILITY

HAY focuses on developing long-lasting products that minimise our environmental impact. We optimise the use of sustainable materials such as recycled materials, FSC-certified wood and water-based lacquer, with a growing number of eco-certified products. We have strict regulatory requirements, and the majority of our products are tested to comply with international standards for strength, durability and safety.

[LINK TO ENVIRONMENTAL PROFILE](#)

CERTIFICATES



FSC™ LABEL MIX

Made from FSC™-certified wood and other controlled materials.



EU ECOLABEL

Applies to EU-Ecolabelled fabrics.
Does not apply to CMHR foam.



INDOOR ADVANTAGE GOLD
FURNITURE

INDOOR ADVANTAGE™ GOLD

Supports a healthy indoor environment.
Confirms to ANSI/BIFMA standards.

TESTS

EN 16139:2013

Furniture–Strength, durability and safety–Requirements for non-domestic seating.

L2 Extreme use–Loading according to Test severity L2.

WARRANTY

HAY provides a 5-year product warranty. Spare parts are available throughout the 5-year warranty period.

Please contact the HAY sales team for further information about the warranty terms and conditions.

CARE & MAINTENANCE

Our Care & Maintenance offers guidance for optimal maintenance of your HAY product. It includes advice and instructions on cleaning and caring for specific materials to prolong the life of your furniture. Find the guide at hay.com.

[LINK TO CARE & MAINTENANCE](#)

RECYCLING & DISASSEMBLY

The furniture is designed to be a long-lasting furniture made to last for many years. The furniture is 100% recyclable and all parts can be fully separated and recycled. All parts can be delivered to a suitable recycling facility.

[LINK TO DISASSEMBLY INSTRUCTION MANUAL](#)

DOWNLOADS

Packshots and lifestyle photos, 2D / 3D files, care and maintenance, instructions, test certificates, product fact sheets, and product presentations are available in our Image Bank at hay.com.

[LINK TO IMAGE BANK](#)

FABRICS

Spring 2022

HAY

HAY FABRIC COLLECTION

We are pleased to introduce some new and exciting fabrics to supplement the existing HAY textile collection. Offered in a good variety of textures, weaves and colours, all the new fabrics have been carefully selected for their superior quality, expression, durability and strength. These include both brand-new fabrics that bring a fresh perspective to HAY's extensive collection, as well as updated colours in the well-known favourites, Mode, Flamiber and Linara.

All the new fabrics are chosen for their ability to complement HAY's wide assortment of furniture, and can be used to cover a wide range of chairs, stools and sofas in many different domestic and contract environments.





MODE DESIGN BY MAHARAM

Maharam's Mode is a small-scale basket weave that offers the look and feel of wool. Its minimal construction incorporates post-consumer recycled content for increased resilience and reduced environmental impact. The extensive colour palette has been extended to include a versatile range of neutral and bright tones that suit a variety of sofas, chairs and stools.



Quilton Duo, Front Atlas 881, Back and base Flamiber dark blue J4



From top to bottom: Hallingdal 166, Mode 032, Steelcut 655, Flamiber dark blue J4, Re-Wool 198



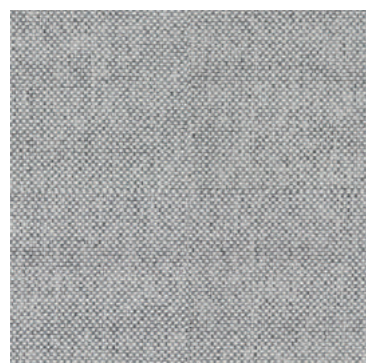
Uchiwa Quilted, Front Mode 009, Back Sense nougat



Arbour Club Sofa, Mode 009



MODE SUGGESTED COLOURS BY HAY



002



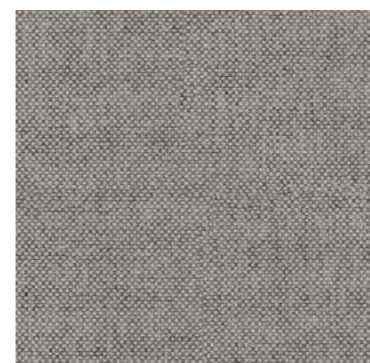
004



005



007



008



009



014



019



020



021



022



023



026



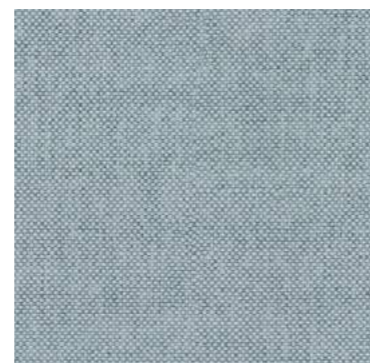
032



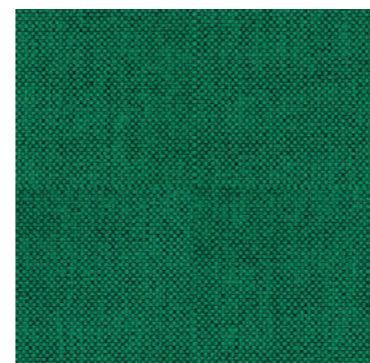
033



035



036



038



040

Please see full Mode colour range here

A close-up photograph of a blue fabric with a fine, woven texture. A diagonal crease runs across the frame from the top left towards the bottom right, creating a sense of depth and highlighting the fabric's grain. The lighting is soft, emphasizing the subtle variations in the blue color.

METAPHOR DESIGN BY MAHARAM

Subtle differences in Maharam's Metaphor's uniquely dyed yarn create extra tonal depth, resulting in a vibrant heathered expression. The tightly woven upholstery has a smooth, linen-like finish and offers high abrasion resistance. Metaphor's versatile palette blends earthy and bright tones, making it suitable for a wide range of sofas, chairs and stools.



Mags Soft, Metaphor 023, Dark grey stitching



From top to bottom: Linara 440, Vidar 656, Flamiber dark blue J4, Linara 100, Metaphor 023



Quilton, Metaphor 025



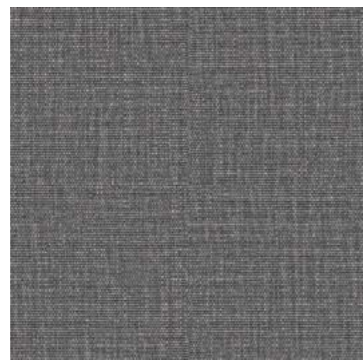
Silhouette, Metaphor 029



METAPHOR COLOURS SUGGESTED BY HAY



002



004



008



009



010



014



021



023



025



027



029



030



033



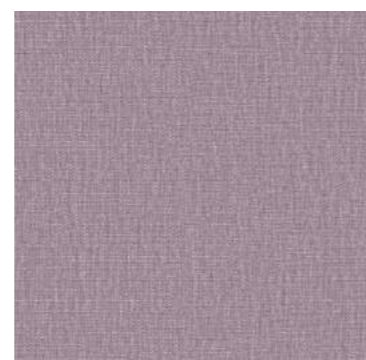
036



037



041



044

A close-up photograph of a textured fabric, likely bouclé, in an olive green color. The fabric has a dense, pebbled texture with small, raised loops. The lighting is soft, highlighting the texture and creating subtle shadows.

FLAMIBER DESIGN BY HAY

Flamiber's beautiful colours, distinctive bouclé texture and durable quality have made it a popular upholstery fabric. Updated in new colours to offer a versatile palette of earthy neutrals and bright tones, it makes a suitable covering for a wide range of sofas, chairs and stools.



Quilton, Flamiber cream A5



Texture Cushions, Flamiber grey C8, Dark blue J4



AAC 121, Flamiber grey C8



FLAMIBER COLOURS SELECTED BY HAY



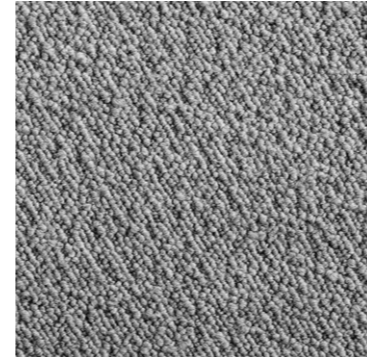
Charcoal C8



Cream A5



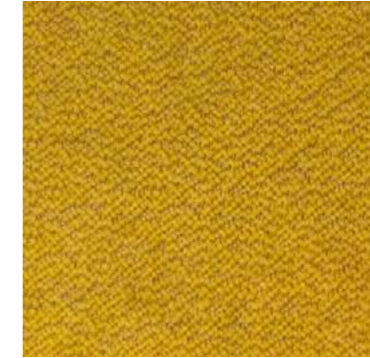
Dark blue J4



Grey C8



Petrol blue J4



Mimosa E9



Sand J7



Carne J7



Olive E9



Ice blue J7



Mandarin E9



Light grey J7



LINARA DESIGN BY ROMO

Crafted from a luxurious cotton-linen blend with a brushed finish, Romo's Linara has an incredibly soft, peach-like texture. The range of colours has been updated to include timeless neutrals and pastel tones that create a versatile covering for any sofa, chair or stool.



AAC 121 Soft, Linara 415

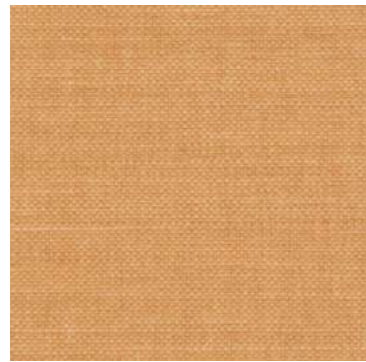


Mags Soft Low, Linara 443

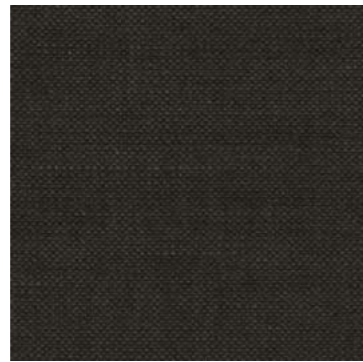


Mags Soft Low, Linara 142, Beige stitching

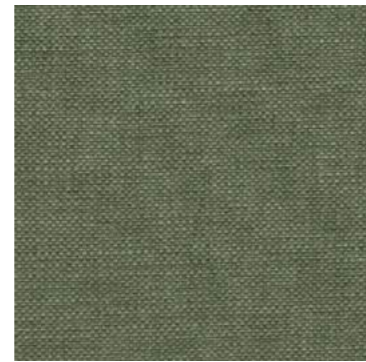
LINARA COLOURS SELECTED BY HAY



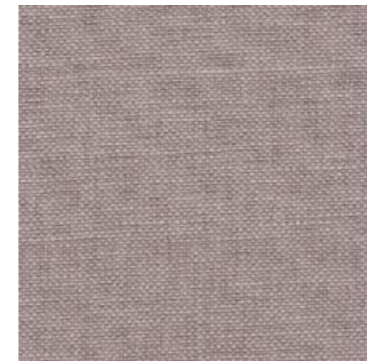
10



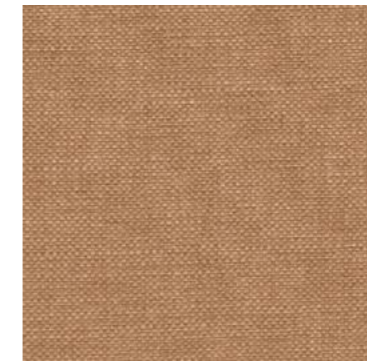
90



100



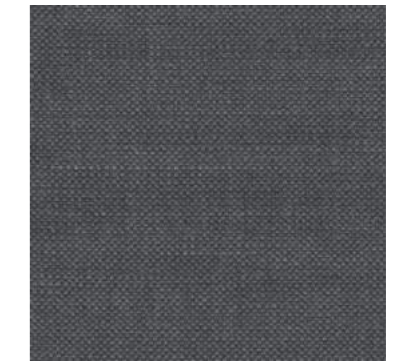
103



142



164



196



198



216



261



311



400



415



440



441



443



499



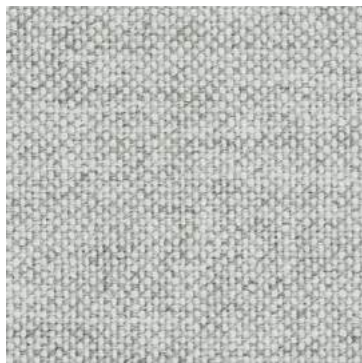
CORE FABRICS

HAY's core fabrics selection comprises a large assortment of fabrics offered in a good mixture of textures and weaves in predominantly wool, cotton and linen. All fabrics are carefully selected for their superior quality, expression, durability and strength, and are available in an expansive colour palette that ranges from pale neutrals to bright, bolder tones.

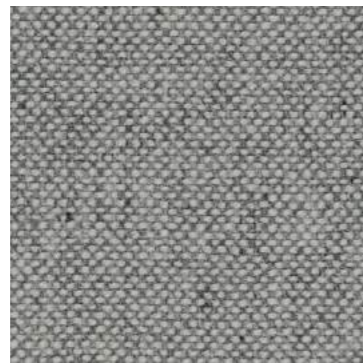
All the upholstery fabrics are chosen for their ability to complement HAY's wide assortment of furniture, and can be used to cover a wide range of chairs, stools and sofas in many different domestic and contract environments.

HALLINGDAL

Kvadrat's first textile Hallingdal has become the archetype of woollen textiles. The very durable upholstery fabric was originally designed in 1965 by Nanna Ditzel, and is made of wool and viscose, which complement each other well. The wool provides excellent durability and flexibility, whilst the viscose adds brilliance and depth to the colour.



Hallingdal
0110



Hallingdal
0116



Hallingdal
0130



Hallingdal
0220

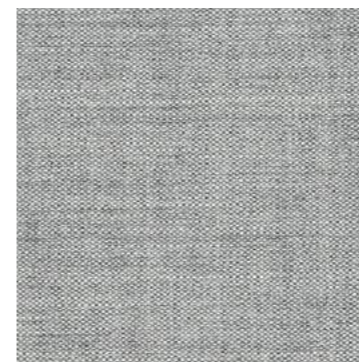
Please see [Fabric & Leather overview](#) with full colour ranges [here](#)



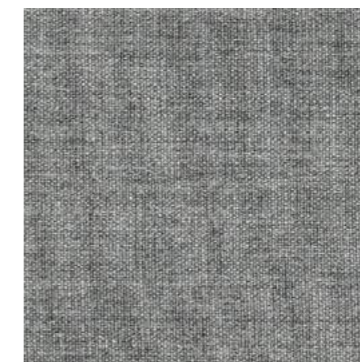


REMIX

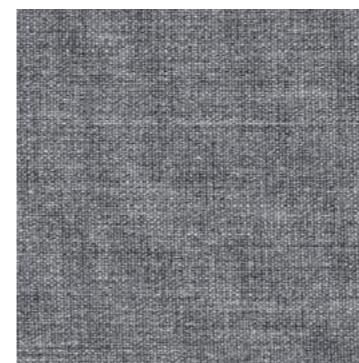
Designed by Giulio Ridolfo, Remix is an elegant upholstery textile distinguished by exceptional depth of colour. The textile features a tight, minimalistic weave, and derives its lively colour play from a combination of two different mélangé yarns, which each combine up to three hues.



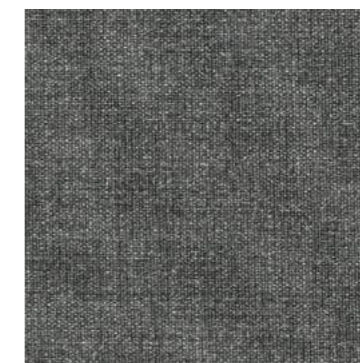
Remix
0123



Remix
0133



Remix
0143

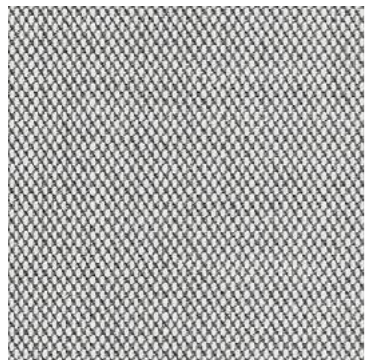


Remix
0163

Please see Fabric & Leather overview with full colour ranges here

STEELCUT TRIO

Originally designed by Frans Dijkmeijer, Steelcut Trio is a hardwearing woollen upholstery textile with the same construction as Steelcut. The three-dimensional surface of Steelcut Trio resembles small pyramids or steel points. Despite the complexity of the textile's innovative weave, it has a simple, precise expression.



Steelcut Trio
0133



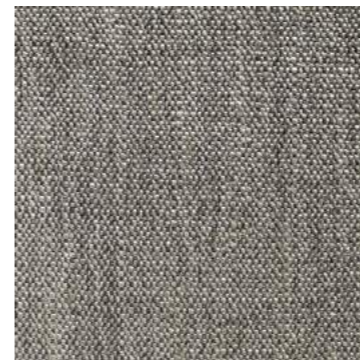
Steelcut Trio
0153





RUSKIN

Perfect for upholstery this versatile plain portrays a natural quality with an element of textural luxury. A blend of viscose, linen and wool creates a beautiful movement of colour and gives Ruskin a textured appearance.



Ruskin
33



Ruskin
05

Please see Fabric & Leather overview with full colour ranges here

BOLGHERI & LEATHER

Bolgheri is a luxurious blend of viscose, wool, silk and other fibres, with a rich expression that appeals to all the senses. The depth of the weave combined with the tactile quality and multicoloured specks adds extra dimension and gives it a distinctive look

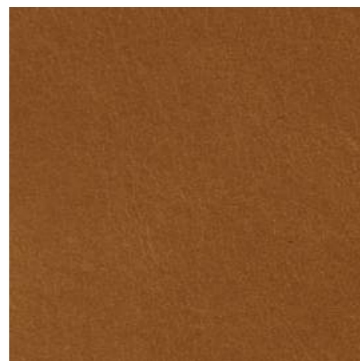
Our leather collection includes different types of leathers for a variety of applications and upholstered surfaces, and offer a high level of resilience and durability.



Bolgheri
LGG60



Sierra Leather
SI1001 Black



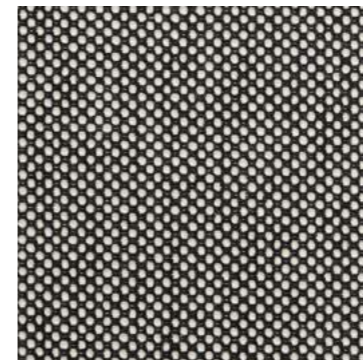
Sense Leather
Cognac

Please see Fabric & Leather overview with full colour ranges [here](#)



DOT 1682

DOT is a high-quality fabric made in a durable wool-cotton blend. The two-thread weave creates a contrasting effect that gives it a tactile texture and a strong visual design.



DOT 1682
02 Bianco/Nero

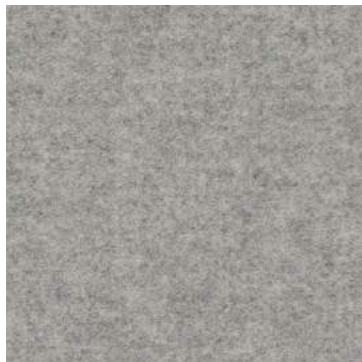


DOT 1682
03 Antracite

Please see Fabric & Leather overview with full colour ranges here

DIVINA MELANGE

Designed by artist and designer Finn Sködt, Divina Melange is a vibrant piece-dyed woollen upholstery textile reminiscent of felt. Compact, comfortable and extremely smooth, Divina Melange expresses colours and the shape of furniture particularly well.



Divina Melange
0120



Please see Fabric & Leather overview with full colour ranges here

Please use below link to download packshots,
lifestyle photos and other sales material of fabrics

IMAGE BANK

LINK TO FABRIC OVERVIEW