

2.0 LED

2xLED 8W | 220-240VAC | 50-60Hz
COB 3-step | incl. PS | phase-cut dim
aluminium powder coated
brushed

1.08kg IP20 3-0,3-D 36°

Color	CODE
White	146264W
Grey	146264L
Gold	146264G
Brown	146264Q
Red	146264P
Black	146264B

Light Colour Selection

Color	LUMEN CRI	CODE
2700K	2x600 >80	2
3000K	2x600 >80	4
1800-2850K	2x410 >95	9

2.0 PAR16

2xPAR16 max.35W | GU10
100-240VAC | 50-60Hz
aluminium powder coated
brushed

1.13kg IP20 3-0,9-D

Color	CODE
White	146220W0
Grey	146220L0
Gold	146220G0
Brown	146220Q0
Red	146220P0
Black	146220B0

OPTIONAL

PAR16 LED GU10 7W
phase-cut dim

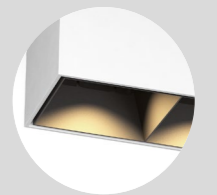
Color	CODE
2700K	901228W2
3000K	901228W4
1800-2850K	901229S9

more lamps and specs on page 541

OPTIONAL

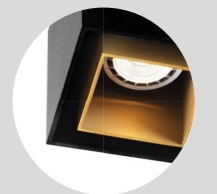
double inner reflector max. 10W

Color	CODE
White	911251W1
Gold	911251G1
Black	911251B1



single inner cover max. 10W
2 pieces needed

Color	CODE
White	911011W1
Gold	911011G1
Black	911011B1



BOX

CEILING SURFACE