
BuzziLoose

Product Specification Sheet

This document contains technical information about the BuzziLoose




Sound absorbing hanging panel


Large office spaces or residential lofts often echo. This is an irritating problem which does little to encourage hard work or make a space cosy. BuzziSpace has developed the BuzziLoose: stick it to the ceiling to dampen sounds without losing out on chic design


Design by BuzziSpace Studio

General


 BuzziLoose
Flat or 3D

 Flat version: honeycomb cardboard + felt
3D version: honeycomb cardboard + MDF + acoustic foam + fabric

	Flat: XS: W 80 cm H 60 cm D 2,7 cm	3D: XS: W 80 cm H 60 cm D 6 cm
	W 31.50" H 23.62" D 1.06"	W 31.50" H 23.62" D 2.36"
	S: W 120 cm H 80 cm D 2,7 cm	S: W 120 cm H 80 cm D 6 cm
	W 47.24" H 31.50" D 1.06"	W 47.24" H 31.50" D 2.36"
	M: W 160 cm H 80 cm D 2,7 cm	M: W 160 cm H 80 cm D 6 cm
W 62.99" H 31.50" D 1.06"	W 62.99" H 31.50" D 2.36"	
L: W 180 cm H 100 cm D 2,7 cm	L: W 180 cm H 100 cm D 6 cm	
W 70.87" H 39.37" D 1.06"	W 70.87" H 39.37" D 2.36"	
XL: W 200 cm H 120 cm D 2,7 cm	XL: W 200 cm H 120 cm D 6 cm	
W 78.74" H 47.24" D 1.06"	W 78.74" H 47.24" D 2.36"	

	Flat: XS: 1,6 kg 3.53 lbs	3D: XS: 3,7 kg 8.16 lbs
	S: 3,5 kg 7.72 lbs	S: 6,7 kg 14.77 lbs
	M: 4,6 kg 10.14 lbs	M: 8,3 kg 18.30 lbs
	L: 6,6 kg 14.55 lbs	L: 10,9 kg 24.03 lbs
	XL: 8,3 kg 18.30 lbs	XL: 13,7 kg 30.20 lbs

Flat: BuzziFelt or covered with extra layer of Fabric, Rough, Terra
3D: Fabric, Rough, Terra
... MonoColor or MultiColor
Black Cables or Alu Cables 2 or 5 m | 78.74 or 196.85"

 If installing on suspended ceiling, verify load capacity prior to installation.

Acoustics



Attenuation



Low tone



Mid tone



High tone

Content

Pattern	3	Dimensions	9
Fabrics	4	Acoustics	10
Fixing System	8		

Pattern

Flat



- Always stitch
- Felt
- Covered with extra layer fabric: Fabric, Rough, Terra

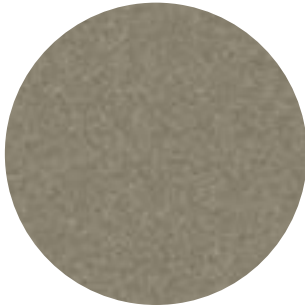
3D



- Never stitch
- Fabric
- Covered with extra layer fabric: Fabric, Rough, Terra

Fabrics

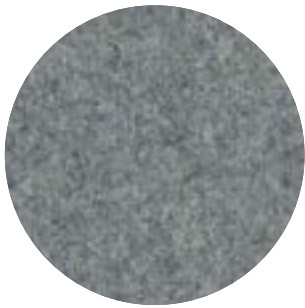
Felt (Only for Flat)



Composition 100% Recycled PE.T. Felt, latex backing
Weight 1.000 g/m² | 29.49 oz/yd²
Abrasion resistance >7.000 Martindale
Flammability EU: EN 13501.1 + A1/2009 Class B-s1,d0
USA: ASTM E84 Class A certified
Fastness to light USA 5



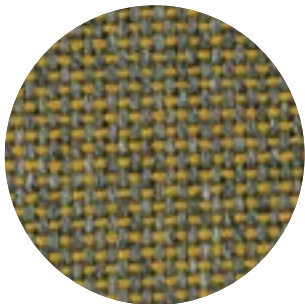
Fabric



Category A
Composition 70% Recycled Wool, 25% Recycled Polyacryl,
5% Recycled Other Fabrics
Weight 405 g/m² | 11.94 oz/yd²
Abrasion resistance 40.000 Martindale, 50,000 Wyzenbeek
Flammability EU: EN 1021.1/2006 | BS EN 1021.1/2006 (cigarette).
EN 1021.2/2006 | BS EN 1021.2/2006 (match)
USA: CAL TB 117 | ASTM E84 CLASS A
Fastness to light EU: 4 | USA 4
Fastness to rubbing EU: Wet 3-4 | Dry 4-5
Fastness to crocking USA: Wet 5 | Dry 5



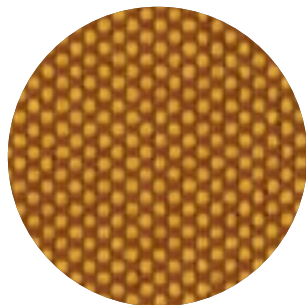
Rough



Category A
Composition 100% Polyacryl
Weight 456 g/m² | 13.45 oz/yd²
Abrasion resistance 40.000 Martindale
Flammability EU: EN 1021.1/2006 | BS EN 1021.1/2006 (cigarette)
USA: CAL TB TB 117
Fastness to light EU: 5
Fastness to rubbing EU: Wet: 3 | Dry: 3



Trevira CS+ | CS



Category A

Weight 420 g/m² | 12.39 oz/yd²

Composition 100% Polyester, Trevira CS

Abrasion resistance 100.000 Martindale, 90,000 Wyzenbeek

Flammability BS 5852 part II: CRIB 5 | BS 7176 Medium Hazard
USA: CAL TB 117 | M1 | B1 | EN 1021/1-2 | C1 |
IMO Res. A652 (16)

Fastness to light EU: 6 | USA 5

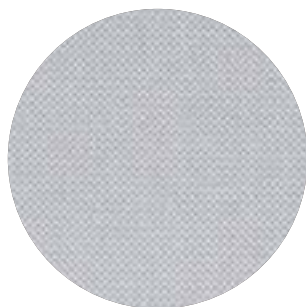
Fastness to rubbing EU: Wet 4-5 | Dry 4-5

Fastness to crocking USA: Wet 5 | Dry 5



Revive 1

kvadrat



Category A

Composition 100% recycled polyester FR

Weight 430 g/lin.m

Abrasion resistance 60.000 Martindale rubs, EN ISO 12947

Flammability EN 1021-1/2 | DIN 4102 B1 | Önorm B1/Q1
UNI 9175 1IM | US Cal. Tech. Bull. 117
IMO A.652 (16)

Fastness to light Note 5-7, ISO 105-B02

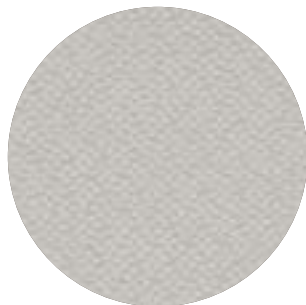
Fastness to rubbing (ISO) dry 5, wet 4-5

Pilling Note 4-5, EN ISO 12945



Revive 2

kvadrat



Category A

Composition 100% recycled polyester FR

Weight 420 g/lin.m

Abrasion resistance 45.000 Martindale rubs, EN ISO 12947

Flammability EN 1021-1/2 | DIN 4102 B1 | Önorm B1/Q1
UNI 9175 1IM | US Cal. Tech. Bull. 117
IMO A.652 (16)

Fastness to light Note 5-7, ISO 105-B02

Fastness to rubbing (ISO) dry 5, wet 4-5

Pilling Note 4-5, EN ISO 12945



Terra



Category B

Composition 100% Pure New Wool

Weight 370 g/m² | 10.91 oz/yd²

Abrasion resistance 40.000 Martindale, 25,000 Wyzenbeek

Flammability EU: BS5852 CRIB 5 | BS5867 PART 2 : 2008 : TYPE B
EN: 1021.2/2006 | USA: CAL TB 117

Fastness to light EU 5 | USA 5

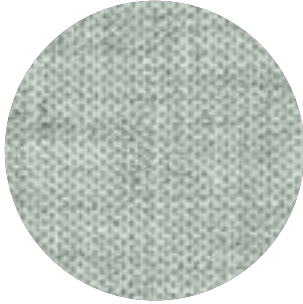
Fastness to rubbing EU: Wet 4 | Dry 4

Fastness to crocking USA: Wet 4 | Dry 4



Clara 2

kvadrat



Category B

Composition 92% new wool, 8% nylon

Weight 400 g/lin.m

Abrasion resistance 80.000 Martindale rubs, EN ISO 12947

Flammability EN 1021-1/2 | BS 5852, ignition source 2-3 | DIN 4102 B2
NF D 60 013 | UNI 9175 11M | US Cal. Tech. Bull. 117, Sec. E
NFPA 260 | IMO A.652(16)

Fastness to light Note 5-7, ISO 105-B02

Fastness to rubbing (ISO) dry 4-5, wet 4

Pilling Note 4, EN ISO 12945



Remix 2

kvadrat



Category B

Composition 90% new wool, 10% nylon

Weight 415 g/lin.m

Abrasion resistance 100.000 Martindale rubs, EN ISO 12947

Flammability EN 1021-1/2 | BS 5852 part 1
Önorm B1/Q1 | NF D 60 013 | UNI 9175, 11M
AS/NZS 1530.3 | Cal. Tech. Bull. 117-2013
NFPA 260 | IMO FTP Code 2010:Part 8

Fastness to light Note 5-7, ISO 105-B02

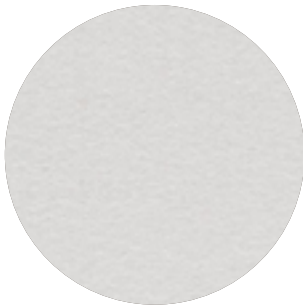
Fastness to rubbing (ISO) dry 4-5, wet 4

Pilling Note 4, EN ISO 12945



Hero

kvadrat



Category C

Composition 96% new wool, 4% nylon

Weight 580 g/lin.m

Abrasion resistance 45.000 Martindale rubs, EN ISO 12947

Flammability EN 1021-1/2 | DIN 4102 B2 | NF D 60 013
UNI 9175 11M | US Cal. Bull. 117-2013 | NFPA 260
IMO A.652 (16)

Fastness to light Note 5-6, ISO 105-B02

Fastness to rubbing (ISO) dry 4-5, wet 4-5

Pilling Note 3-4, EN ISO 12945



Tonus 4

kvadrat



Category D

Composition 90% new wool, 10% Helanca

Weight 665 g/lin.m

Abrasion resistance 100.000 Martindale rubs, EN ISO 12947

Flammability EN 1021-1/2 | BS 5852 part 1 | DIN 4102 B2
Önorm B1/Q1 | NF D 60 013 | UNI 9175 11M
US Cal. Bull. 117-2013 | NFPA 260 | IMO A.652 (16)

Fastness to light Note 5-7, ISO 105-B02

Fastness to rubbing (ISO) dry 3-5, wet 3-5

Pilling Note 3, EN ISO 12945



Memory 2

kvadrat



Category E

Composition 100% Trevira CS

Weight 700 g/lin.m

Abrasion resistance

35.000 rubs acc. to the Martindale method, EN ISO 12947

Flammability EN 1021-1/2 | DIN 4102 B1 | Önorm B1/Q1
NF D 60 013 | NF P 92 507 M1 | UNI 9175 11M
UNI 9177 classe 1 | US Cal. Tech. Bull. 117
IMO A.652 (16)

Fastness to light Note 5-8, ISO 105-B02

Fastness to rubbing (ISO) dry 4-5, wet 4-5

Pilling Note 4, EN ISO 12945



Matrix

kvadrat



Category F

Composition 100% Trevira CS

Weight 760 g/lin.m

Abrasion resistance

App. 60.000 rubs acc. to the Martindale method, EN ISO 12947

Flammability EN 1021-1/2 | BS 5852 crib 5 | BS 5867 part 2 type B
DIN 4102 B1 | Önorm B1/Q1 | NF D 60 013
UNI 9175 11M | US Cal. Tech. Bull. 117 | NFPA 701
IMO A.652 (16)

Fastness to light Note 5-7, ISO 105-B02

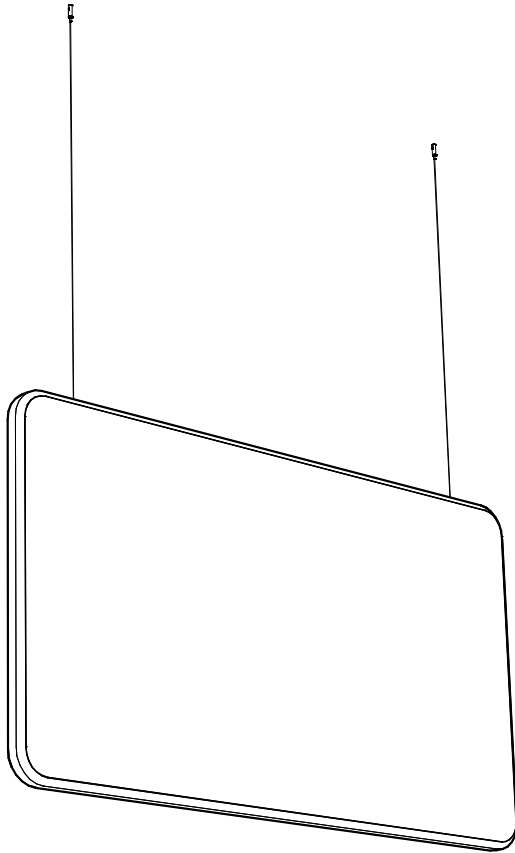
Fastness to rubbing (ISO) dry 4-5, wet 4-5

Pilling Note 4, EN ISO 12945



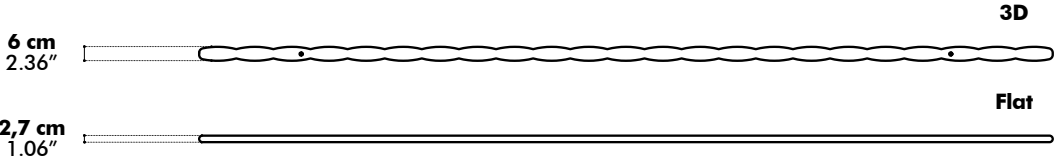
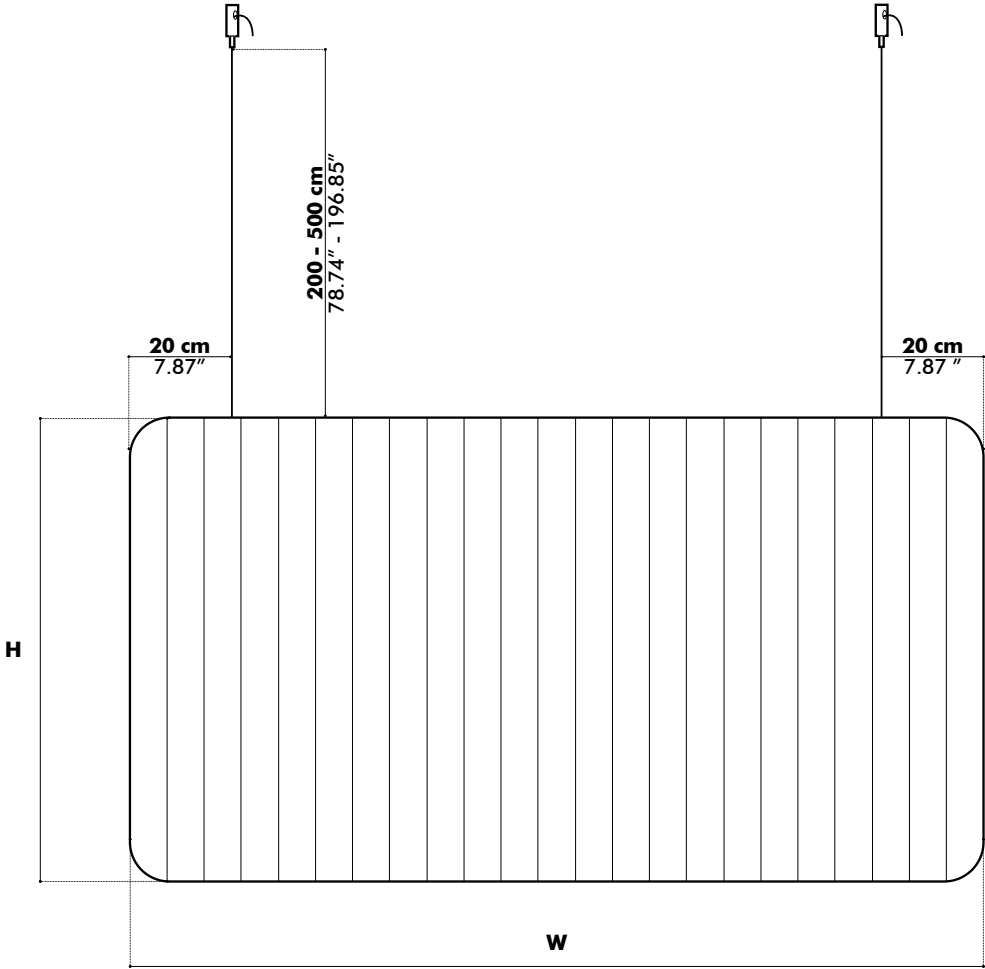
Fixing System

BuzziLoose



- Cable L 2 m | 5 m Ø 1,5 mm incorporated in BuzziLoose
- Color Cable: aluminium or black
- 2x fasteners included
- Ceiling screws not included

Dimensions

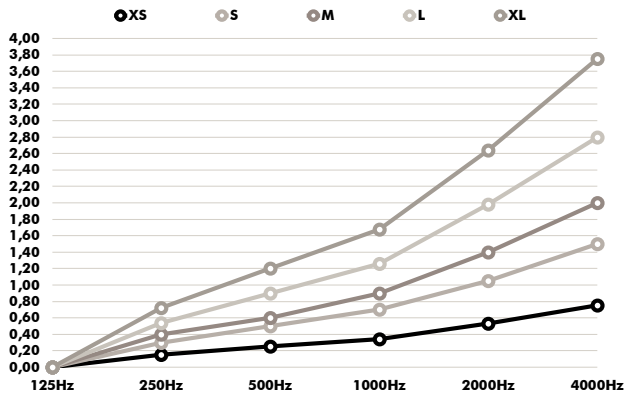


	XS	S	M	L	XL
W	80 cm 31.50"	120 cm 47.24"	160 cm 62.99"	180 cm 70.87"	200 cm 78.74"
H	60 cm 23.62"	80 cm 31.50"	80 cm 31.50"	100 cm 39.37"	120 cm 47.24"

Acoustics

BuzziLoose Flat

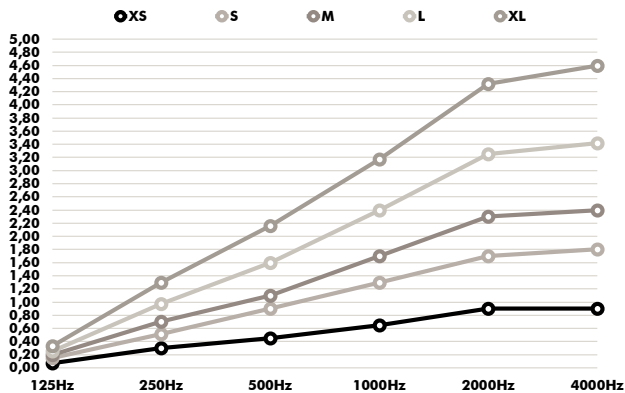
Equivalent sound absorption area in m² per object



Hz	XS Aeq/m ²	S Aeq/m ²	M Aeq/m ²	L Aeq/m ²	XL Aeq/m ²
125	0.00	0.00	0.00	0.00	0.00
250	0.15	0.30	0.40	0.54	0.72
500	0.25	0.50	0.60	0.90	1.20
1000	0.34	0.70	0.90	1.26	1.68
2000	0.53	1.05	1.40	1.98	2.64
4000	0.75	1.50	2.00	2.80	3.75

BuzziLoose 3D

Equivalent sound absorption area in m² per object



Hz	XS Aeq/m ²	S Aeq/m ²	M Aeq/m ²	L Aeq/m ²	XL Aeq/m ²
125	0.07	0.15	0.20	0.25	0.33
250	0.30	0.51	0.70	0.97	1.30
500	0.45	0.90	1.10	1.60	2.16
1000	0.65	1.30	1.70	2.40	3.17
2000	0.90	1.70	2.30	3.25	4.32
4000	0.90	1.80	2.40	3.42	4.60

CAT A Fabric

Specifications

Composition 70% Recycled Wool, 25% Recycled Polyacryl,
5% Recycled Other Fabrics
Weight 405 g/m² | 11.94 oz/yd²
Width 148 cm | 58.27"
Thickness 0,8 mm | 0.031 inch
Abrasion resistance 40.000 Martindale, 50.000 Wyzenbeek
Flammability EU: EN 1021.1/2006 | BS EN 1021.1/2006 (cigarette)
EN 1021.2/2006 | BS EN 1021.2/2006 (match)
USA: CAL TB 117 | ASTM E84 CLASS A
Fastness to light EU: 4 | USA: 4
Fastness to rubbing EU: Wet 3-4 | Dry 4-5
Fastness to crocking USA: Wet 5 | Dry 5



Maintenance

Vacuum clean regularly. Don't wash. Don't remove the Fabric from the product.
Treat spillages immediately. Professional dry clean or wipe clean with a pH neutral soap and a damp cloth.

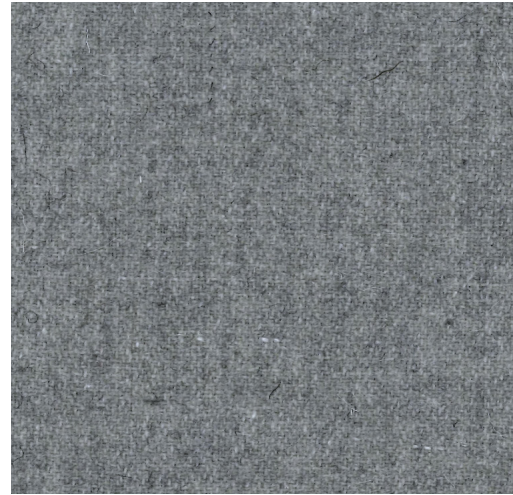


CAT A Fabric

NO BOUNDARIES



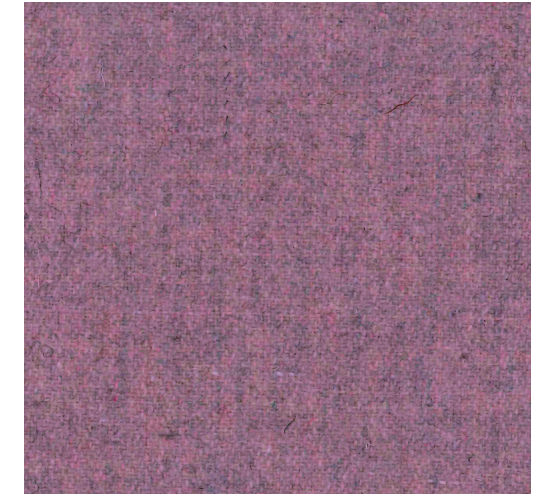
Fabric



FA-LightGrey 1000



FA-Kiesel 7



FA-Pink 73



FA-Ivory 101



FA-Naturel 1



FA-Beige 1037



FA-Dolphin 180



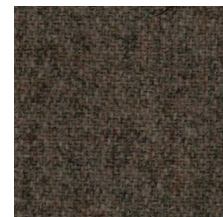
FA-Shitake 124



FA-DarkBrown 18



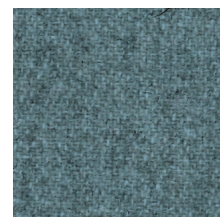
FA-Rust 29



FA-Taupe 1008



FA-Mint 50



FA-Azure 144



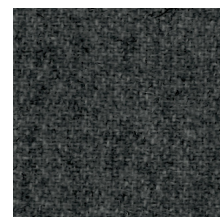
FA-Olive 53



FA-Army 14



FA-Zwart 1003



FA-MidGrey 1001



FA-Blue 45



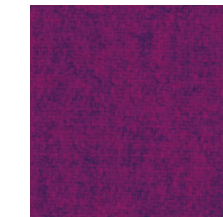
FA-Petrol 56



FA-Purple 78



FA-Aubergine 74



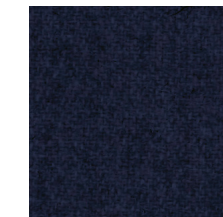
FA-Prune 76



FA-Fuchsia 77



FA-Violet 72



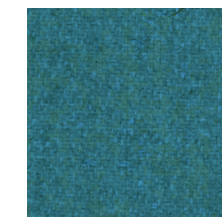
FA-Navy 1007



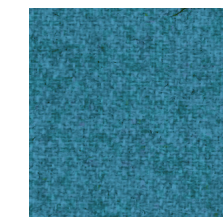
FA-Indigo 90



FA-LightBlue 41



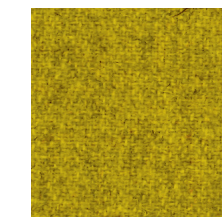
FA-Aqua 143



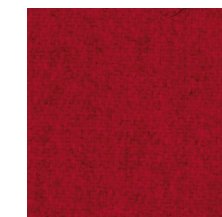
FA-OceanBlue 147



FA-Pistache 52



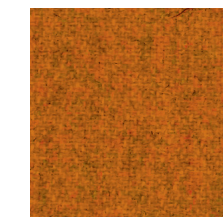
FA-Yellow 24



FA-Red 2011



FA-Fire 139



FA-Mandarin 129



FA-Orange 2012

Fabric