

PIANO PIANO BLACK RUG

By Teresa Sapey

CHEMISTUBES, is based on "decontextualization". A new object is produced through increasing the size (intervention in scale), using different materials to the original one (in this case, the ecological material of resin of polyethylene using the technique of rotational moulding), and changing the original use for which an object was first designed. What a laboratory container was before is now a decorative IN&OUT item. Besides offering finishes in a great variety of matte or lacquered colours, it also offers you the option of added lighting, which gives this collection a more interesting touch, creating a surprising, harmonious environment that has great elegance for any interior & exterior space.

View online: <https://www.vondom.com/products/62040>

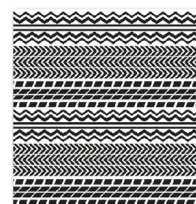
Features

Description

Product designed by soft and resistant to UV rays Polyethylene fibres

Weight

13 Kg



2x2 m
78 3/4" x 78 3/4"

PIANO PIANO White
PIANO PIANO Blanco

Finishes

BASIC

Ref. 62040

Matt Polyethylene

COLOR

WHITE

BASIC



