

CATEGORIA G

TESSUTO IGNIFUGO - FIRE RETARDANT FABRIC - TISSU NON-FEU - FEUERHEMMENDER STOFF - TELA IGNÍFUGA

PEDRALI®

G 59



G 66



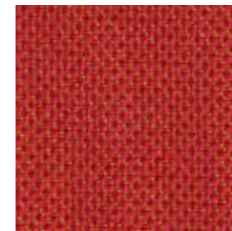
G 63



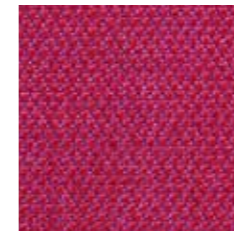
G 67



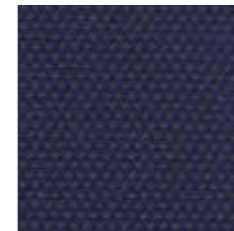
G 69



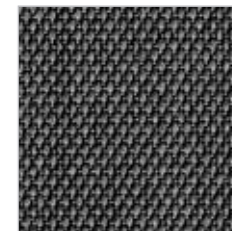
G 60



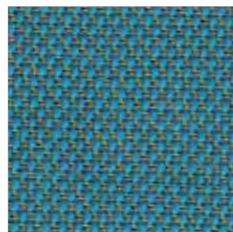
G 61



G 62



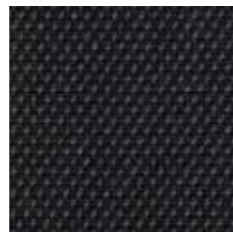
G 68



G 64



G 65





CATEGORIA G

TESSUTO IGNIFUGO
FIRE RETARDANT FABRIC
TISSU NON-FEU
FEUERHEMMENDER STOFF
TELA IGNÍFUGA

CATEGORIA G - CATEGORY G - CATEGORIE G - KATEGORIE G - CATEGORIA G

COMPOSIZIONE
COMPOSITION
COMPOSITION
STOFFZUSAMMENSETZUNG
COMPOSICIÓN

RESISTENZA ALL'ABRASIONE - Metodo Martindale
ABRASION RESISTANCE - Method Martindale
RESISTANCE A L'ABRASION - Méthod Martindale
ABRIEBBESTÄNDIGKEIT - Verfahren Martindale
RESISTENCIA A LA ABRASION - Método Martindale

RESISTENZA ALLA LUCE ARTIFICIALE
COLOUR FASTNESS TO ARTIFICIAL LIGHT
TENUE A LA LUMIERE
LICHTBESTÄNDIGKEIT
RESISTENCIA A LA LUZ ARTIFICIAL



LAVAGGIO
CLEANING
ENTRETIEN
REINIGEN
LAVADO

90% Lana vergine, pettinata - 10% Nylon
90% Worsted pure new wool - 10% Nylon
90% Pure laine vierge cardée - 10% Nylon
90% Gekämmte Feinwolle - 10% Nylon
90% Pura lana peinada - 10% Nylon

80.000 cicli
80.000 cycles
80.000 cycles
80.000 Zyklen
80.000 ciclos

5-7 (ISO 1-8)
5-7 (ISO 1-8)
5-7 (ISO 1-8)
5-7 (ISO 1-8)
5-7 (ISO 1-8)

AS/NZS 3837, class 2
BS 5852, ig. s. 2-3
DIN 4102 B2, ÖNORM B1/Q1
EN 1021-1/2
NF D 60 013
NFPA 260
UNI 9175, classe 1
US Cal. Tech. Bull. 117

