



Fredericia

1 9 1 1

HAIKU - 2-SEAT - GAMFRATESI



Haiku - 2-Seat - 1632

, D: 88 cm
H: 104 cm, Sh: 44,5 cm
Weight: 56 kg, Cbm: 0m³



DESCRIPTION

The Haiku sofa offers both a protective shell and cosy inner setting. Perfectly suited for larger spaces where the setting calls for more intimate privacy seating.

CONSTRUCTION

Molded hard foam on a tubular steel frame with Nozag springs built in. Covered in additional layer of foam. Seat frame in molded cold foam. Black lacquered RAL 9005 (structured) legs. Incl. 2 cushions.

UPHOLSTERY

Fabric group: 1, 2, 3, 4, 5.

Leather group: 0, 1, 2, 3.

TEST

EN 15373:2007

G U A R A N T E E

Fredericia Furniture A/S offers a five-year guarantee against manufacturing defects in standard products (materials and construction). Wear and damage to covers, surface treatment, inappropriate use and the like are not covered by the warranty.






COLOUR WORLDS BY FREDERICIA

*To help you navigate the vast swathes of fabrics,
leathers and colours available, Fredericia has
curated a refined materials toolbox to help make
your choices as simple as possible.*

Choosing the right upholstery to complement your interior can be quite a journey. The choice of fabric, leather and colour is crucial in the expression of each furniture piece and the role it plays in the interior – whether the style evokes classic restraint, contemporary boldness or daring creativity.

Fredericia's timeless mix of soft, natural shades rooted in Scandinavian nature stands outside of fast-moving trends with a long-lasting style that reflects the spirit of your time and place.

The fabrics produce a variety of tactile experiences that gravitate from heavy to light, from delicate to bold, and from calm to lively - awakening the senses in the ambience you want to create.

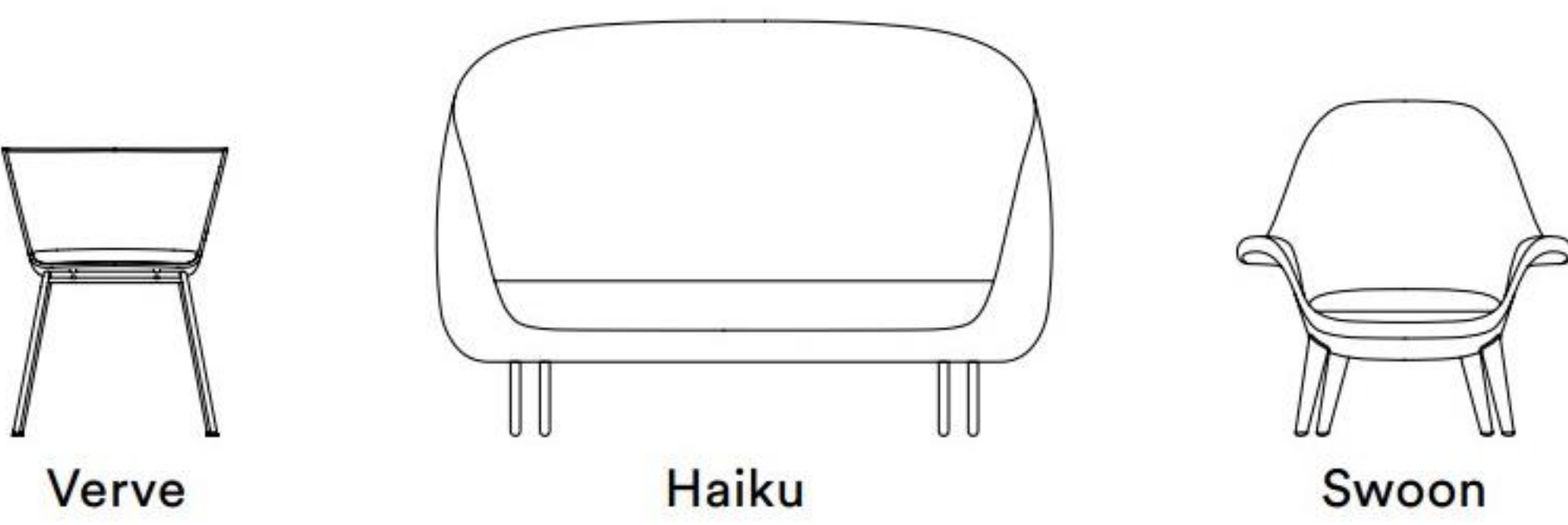
Dive into Fredericia's world of colours and create your own unique piece of furniture. 

Application Groups

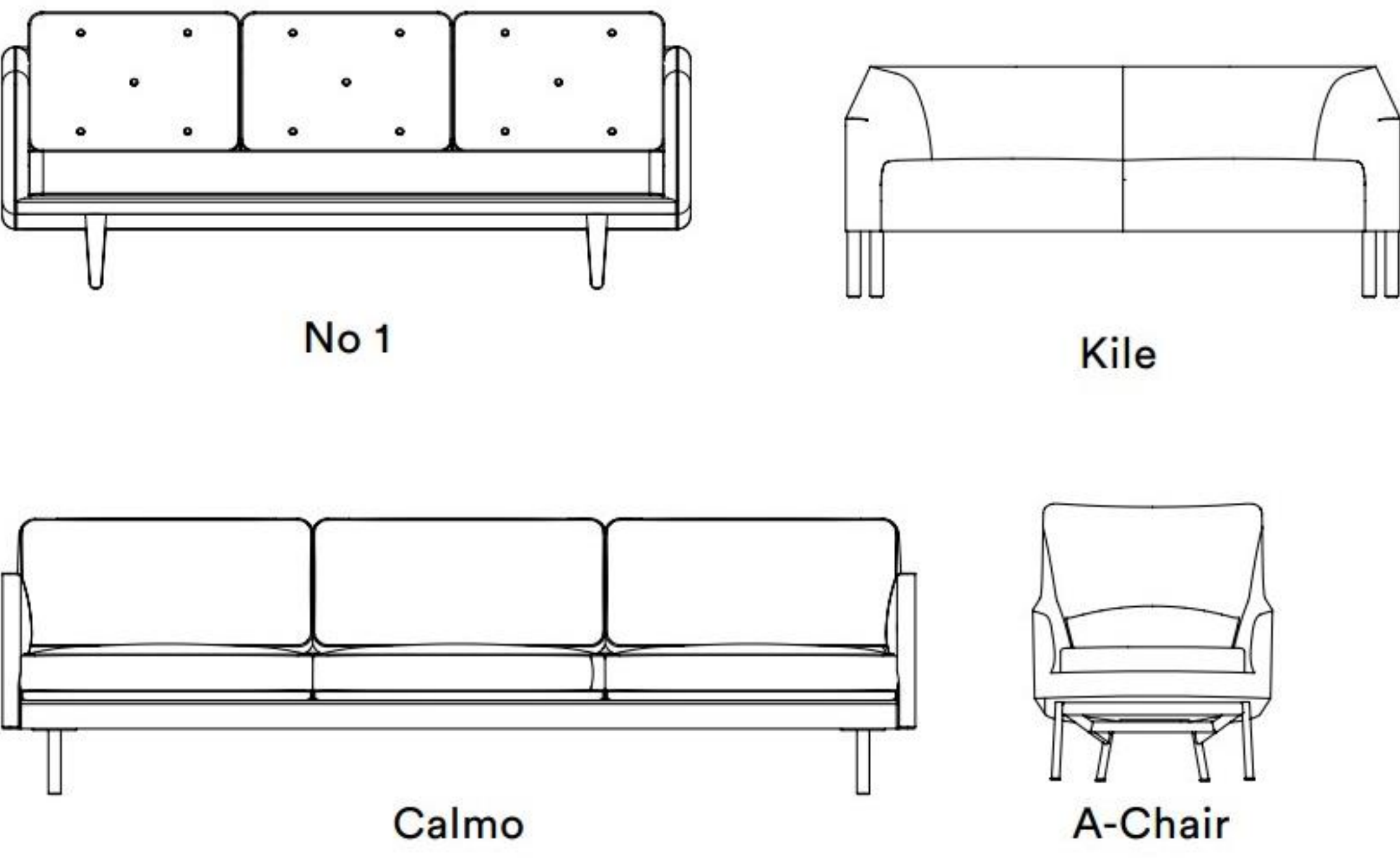
A



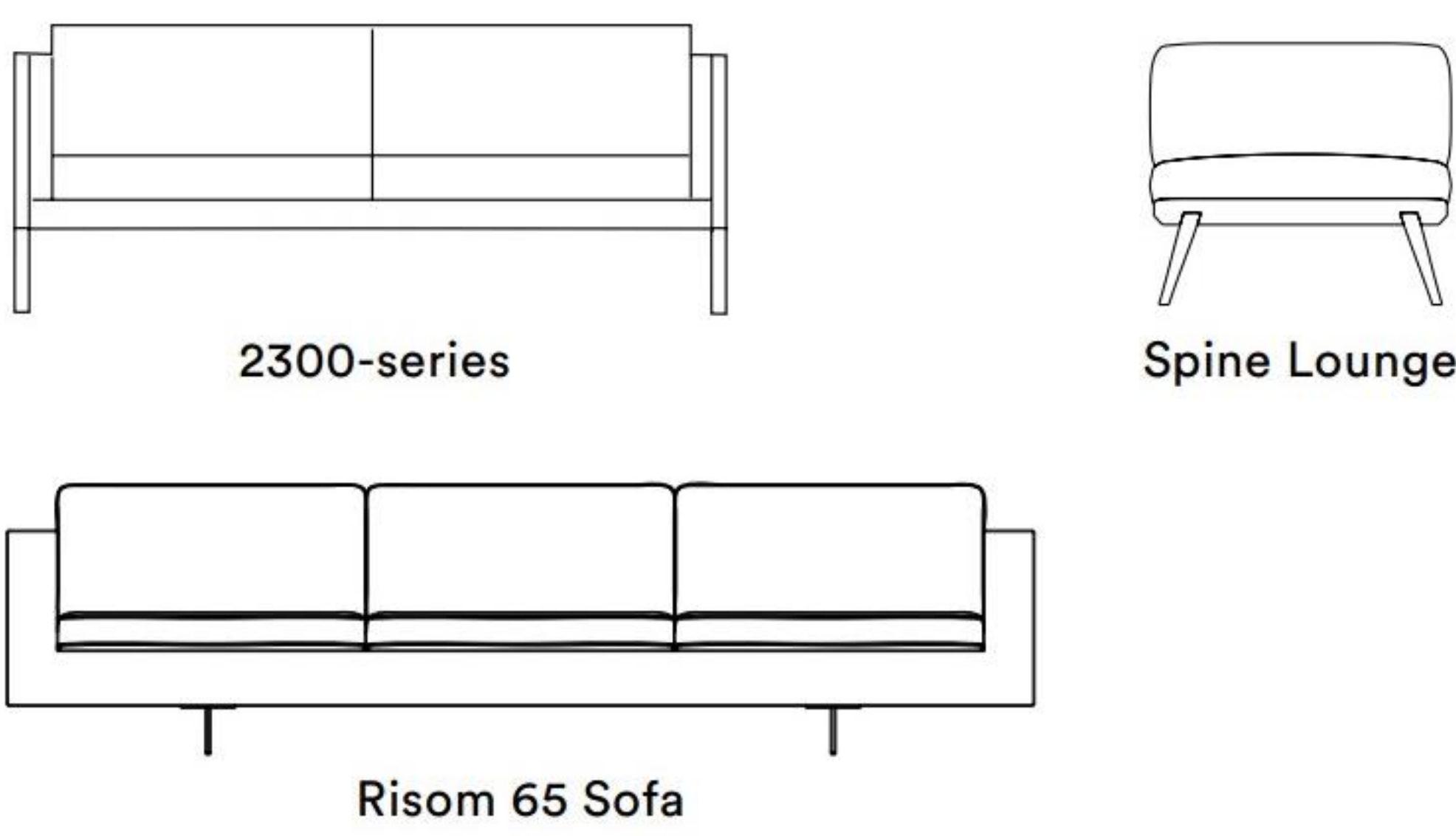
B



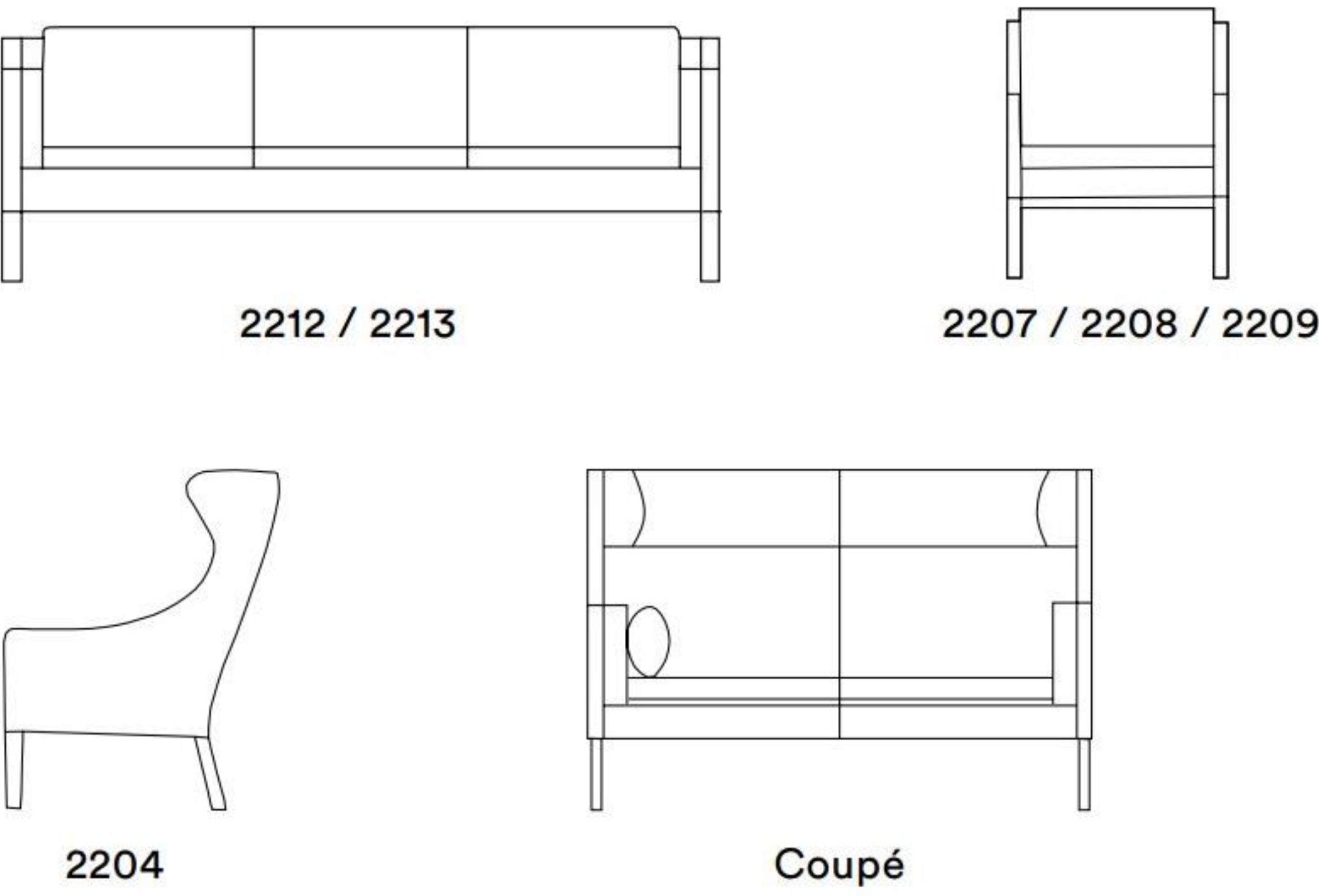
C



D



E



Fabric Application

| Fabric Group 1 | A | B | C | D | E | Page |
|----------------|---|---|---|---|---|------|
| Fame | • | • | | | | 46 |
| Maple | • | • | • | • | | 60 |
| Mood | • | • | • | • | | 54 |
| Remix | • | | | | | 47 |
| Rime | • | • | • | | | 48 |
| Ruskin | • | • | • | • | • | 61 |
| | | | | | | |
| Fabric Group 2 | A | B | C | D | E | |
| Aguila | • | • | • | • | | 60 |
| Canvas | • | | | • | | 46 |
| Carlotto | • | • | • | • | | 66 |
| Craggan | • | • | • | • | | 52 |
| Fiord | • | • | • | • | | 47 |
| Grid | • | • | • | • | | 74 |
| Hallingdal | • | • | • | • | • | 54 |
| Harald | • | • | | • | • | 71 |
| Merit | • | • | • | | | 75 |
| Re-wool | • | • | • | • | | 48 |
| Savanna | • | • | • | • | | 62 |
| Steelcut Trio | • | • | • | • | | 56 |
| Sunniva | • | • | • | • | • | 62 |
| Tonus | • | • | • | | | 56 |
| | | | | | | |
| Fabric Group 3 | A | B | C | D | E | |
| Comfort+ | • | • | • | • | | 74 |
| Divina | • | • | • | • | • | 52 |
| Divina Melange | • | • | • | • | • | 53 |
| Sinequanon | • | • | • | • | • | 63 |
| Twill weave | • | • | • | • | • | 57 |
| Vidar | • | • | • | • | • | 57 |
| | | | | | | |
| Fabric Group 4 | A | B | C | D | E | |
| Cobblestone | • | • | • | • | | 66 |
| Grand Mohair | • | • | | | | 70 |
| Tosca | • | • | • | • | | 63 |
| | | | | | | |
| Fabric Group 5 | A | B | C | D | E | |
| Byram | • | • | • | • | | 70 |
| Fuse | • | | • | • | • | 53 |
| Noise | • | • | • | • | • | 55 |
| Pulsar | • | | • | • | • | 67 |
| Pilot | • | • | • | • | • | 67 |
| Reflex | • | | • | • | • | 55 |
| Sonar | • | • | • | • | • | 61 |

CANVAS

Fabric Group 2



| | |
|---------------------|---|
| About | Flat wool textile with subtle striped texture. Large scale of colour blends. |
| Application | A |
| Composition | 90% wool, 10% polyamide |
| Martindale | 100 .000 |
| Environment | EU Ecolabel |
| Flame resistance | AS/NZS 1530.3, BS 5852 part 1, EN 1021-1/2, IMO FTP Code 2010 Part 8, NF D 60 013, NFPA 260, SN 198 898 5.3 with treatment, UNI 9175 1IM, US Cal. Bull. 117-2013, ÖNORM B1/ Q1, BS 5852 ignition source 3, BS 5852 Crib 5 |
| Pilling | 4 |
| Lightfastness | 6 |
| More info | kvadrat.dk |
| Total no of colours | 46 |



254
Camel



154
Charcoal



424
Cognac



114
Light sand



124
Cool grey

FAME

Fabric Group 1



| | |
|---------------------|---|
| About | Classic flat woven wool fabric in monochrome colours Suitable for flat upholstery. |
| Application | A B |
| Composition | 95% wool, 5% polyamide |
| Martindale | 100 .000 |
| Environment | EU Ecolabel |
| Flame resistance | BS EN 1021-1 Cigarette, BS EN 1021-2 Match, BS 5852 Crib 5, CA TB 117-2013, Class Uno UNI 9175 Class 1 I EMME, AM 18 - NF D 60-013, BS 5852 Part 1 0,1 Cigarette & match, ÖNORM B 3825-B1-3800-Q1 UK, IMO MSC 307(88) Annex 1 part 8, MED Certificate IMO, BS 476 Part 7, class 1 |
| Pilling | 4 |
| Lightfastness | 5-7 |
| More info | gabriel.dk |
| Total no of colours | 60 |



61134
Dark brown



60999
Black



61047
Deep red



64167
Deep red



66061
Navy blue



68148
Olive



61131
Cognac

FIORD

Fabric Group 2



| | |
|---------------------|---|
| About | A soft, nubby surface and subtle colour blends wool fabric. Suitable for all upholstery. |
| Application | A B C D |
| Composition | 92% wool, 8% polyamide |
| Martindale | 60.000 |
| Environment | EU Ecolabel |
| Flame resistance | BS 5852 Crib 5 with treatment, BS 5852 part 1, DIN 4102 B2, EN 1021-1/2, IMO FTP Code 2010 Part 8, NF D 60 013 UNI 9175 1IM, US Cal. Bull. 117-2013, AS/NZS 3837, class 2 SN 198 898 5.3 with treatment |
| Pilling | 4-5 |
| Lightfastness | 6 |
| More info | kvadrat.dk |
| Total no of colours | 27 |



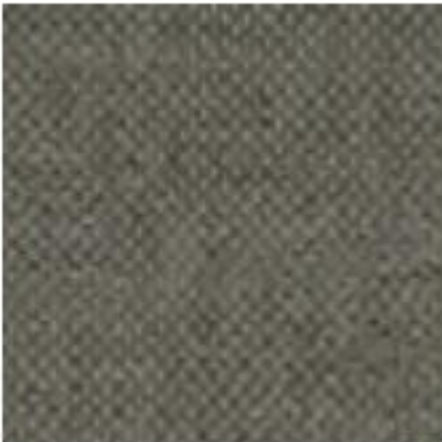
271
Clay



581
Deep red



391
Dark brown



961
Olive



151
Cold grey



751
Dusty blue



191
Charcoal



991
Ancient green

REMIX

Fabric Group 1



| | |
|---------------------|---|
| About | Flat wool textile with a large scale of colour blends. |
| Application | A |
| Composition | 90% wool, 10% polyamide |
| Martindale | 100.000 |
| Environment | EU Ecolabel |
| Flame resistance | AS/NZS 1530.3, AS/NZS 3837, class 2, BS 5852 part 1, EN 1021-1/2, IMO FTP Code 2010 Part 8, NF D 60 013, NFPA 260, UNI 9175 1IM, US Cal. Bull. 117-2013, ÖNORM B1/ Q1, BS 5852 Crib 5 |
| Pilling | 5 |
| Lightfastness | 5 |
| More info | kvadrat.dk |
| Total no of colours | 49 |



252
Camel



163
Charcoal



183
Navy blue



133
Clay



373
Deep red



973
Ancient green



393
Dark brown



433
Cognac



143
Cold grey



733
Dusty blue

RIME

Fabric Group 1



| | |
|---------------------|---|
| About | Classic wool two-tone textile with a beautiful melange effect. |
| Application | A B C D |
| Composition | 90% wool, 10% polyamide |
| Martindale | 100 . 000 |
| Environment | EU Ecolabel |
| Flame resistance | AS/NZS 3837, class 2, BS 5852 part 1, DIN 4102 B2, EN 1021-1/2, IMO FTP Code 2010 Part 8, NF D 60 013, SN 198 898 5.3 with treatment, UNI 9175 1IM, US Cal. Bull. 117-2013, ÖNORM B2/Q1, BS 5852 Crib 5 with treatment, BS 5852 ignition source 3 |
| Pilling | 4 |
| Lightfastness | 5-6 |
| More info | kvadrat.dk |
| Total no of colours | 27 |



RE-WOOL

Fabric Group 2

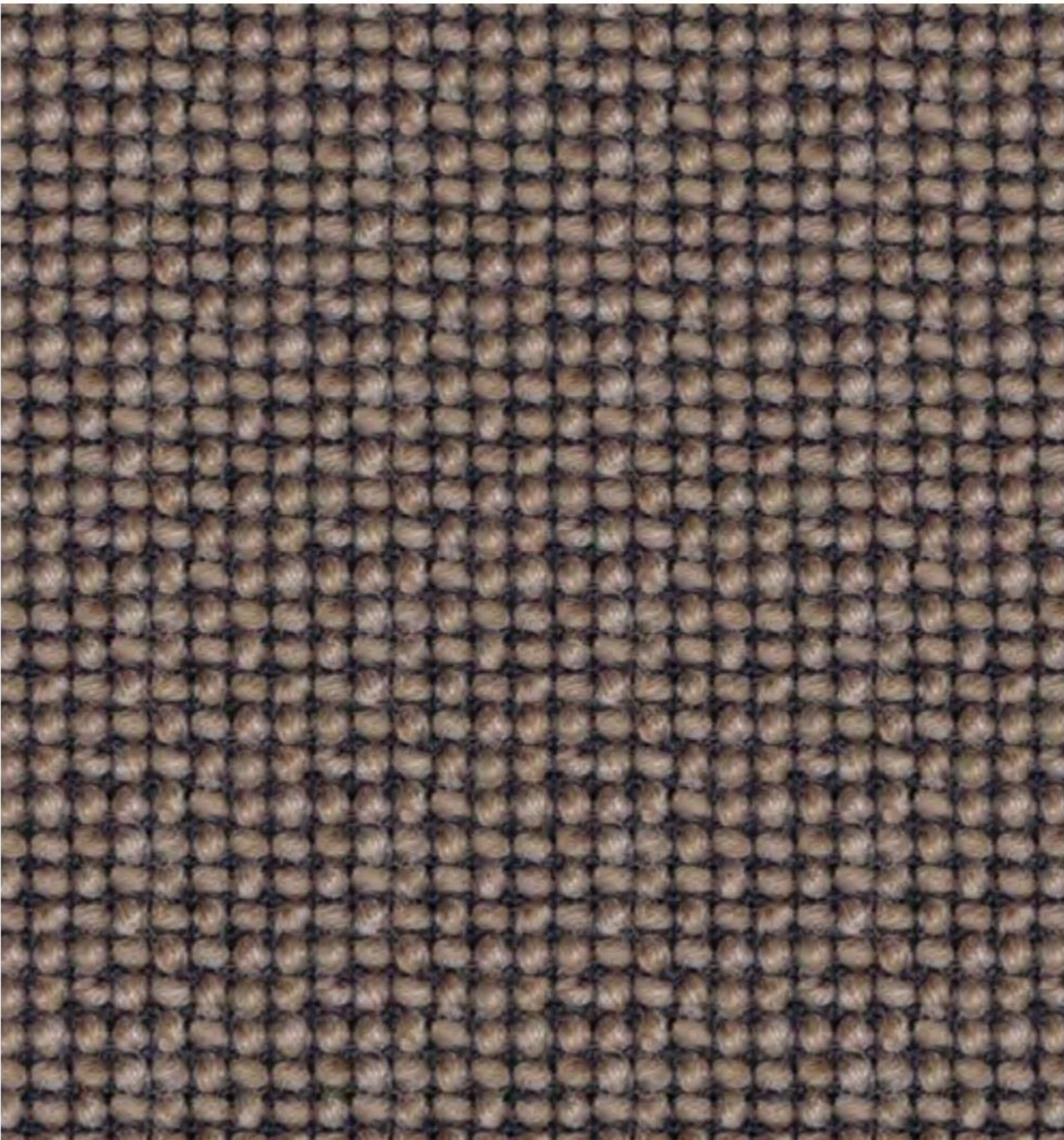


| | |
|---------------------|---|
| About | Upholstery textile with a subtle yet visible woven structure and soft colourways enriched by sparks. Produced using 45% recycled wool from Kvadrat's English mills. |
| Application | A B C D |
| Composition | 45% wool, 45% recycled wool, 10% polyamide |
| Martindale | 50 . 000 |
| Environment | EU Ecolabel |
| Flame resistance | AS/NZS 1530.3, BS 5852 Crib 5 with treatment, BS 5852 ignition source 3, BS 5852 part 1, EN 1021-1/2, IMO FTP Code 2010 Part 8, NF D 60 013, UNI 9175 1IM, US Cal. Bull. 117-2013, ÖNORM B1/ Q1 |
| Pilling | 4 |
| Lightfastness | 7 |
| More info | kvadrat.dk |
| Total no of colours | 21 |



CRAGGAN

Fabric Group 2



| | |
|---------------------|--|
| About | Voluminous wool textile with a remarkable yet harmonious texture. Two-tone weaved with subtle kontrasts. |
| Application | A B C D |
| Composition | 100% wool |
| Martindale | 50 .000 |
| Environment | Sustainable resource |
| Flame resistance | EN 1021 - 1 Cigarette, EN 1021 - 2 Match, BS 5852 Ignition Source 5 |
| Pilling | 4 |
| Lightfastness | 5 |
| More info | camirafabrics.com |
| Total no of colours | 10 |



02
Camel



09
Charcoal



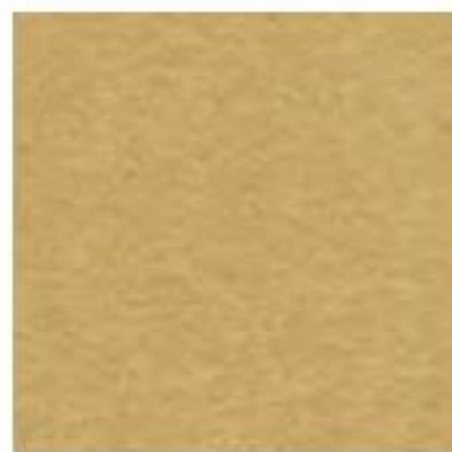
10
Cold grey

DIVINA 3

Fabric Group 3



| | |
|---------------------|---|
| About | Classic wool felt used for furniture as well as clothing. Divina 3 (monochrome) are suitable for all upholstery. Domestic to moderate public use. |
| Application | A B C D E |
| Composition | 100% wool |
| Martindale | 45 .000 |
| Environment | EU Ecolabel |
| Flame resistance | AS/NZS 1530.3, BS 5852 Crib 5, BS 5852 part 1, BS 5867 part 2 type B, EN 1021-1/2, EN 13501, C-s1, d0, glued, IMO FTP Code 2010 Part 8, NF D 60 013, NFPA 260, SN 198 898 5.3 with treatment, UNI 9175 1IM, US Cal. Bull. 117-2013, ÖNORM B1/ Q1, BS 5852 ignition source 3 |
| Pilling | 3 |
| Lightfastness | 7 |
| More info | kvadrat.dk |
| Total no of colours | 56 |



236
Camel



191
Jet black



346
Cognac



246
Cognac



944
Olive



793
Navy blue



886
Ancient green

DIVINA MELANGE 3

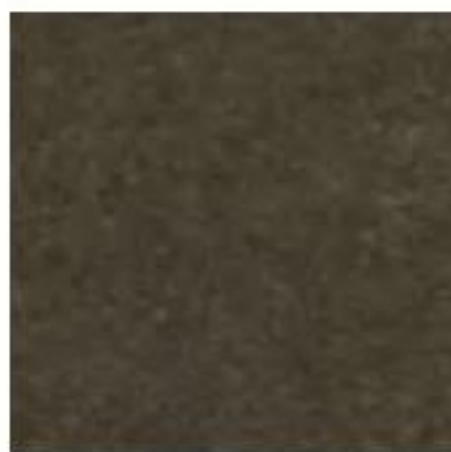
Fabric Group 3



| | |
|---------------------|---|
| About | Classic wool felt used for furniture as well as clothing. Divina Melange 2 (melange yarns) are suitable for all upholstery. Domestic to moderate public use. |
| Application | A B C D E |
| Composition | 100% wool |
| Martindale | 45.000 |
| Environment | EU Ecolabel |
| Flame resistance | AS/NZS 1530.3, BS 5852 Crib 5, BS 5852 part 1, BS 5867 part 2 type B, EN 1021-1/2, EN 13501, C-s1, d0, glued, IMO FTP Code 2010 Part 8, NF D 60 013, NFPA 260, SN 198 898 5.3 with treatment, UNI 9175 1IM, US Cal. Bull. 117-2013, ÖNORM B1/ Q1, BS 5852 ignition source 3 |
| Pilling | 3 |
| Lightfastness | 6-7 |
| More info | kvadrat.dk |
| Total no of colours | 24 |



220
Light sand



280
Dark brown



120
Cold grey



180
Charcoal



771
Dusty blue

FUSE

Fabric Group 5



| | |
|---------------------|---|
| About | Densely woven wool and cotton blend with a close pattern of ribbed stripes in which the weave creates rows of stitch-like patterning. |
| Application | A C D E |
| Composition | 65% wool, 23% wool, 8% viscose, 4% polyamide |
| Martindale | 100.000 |
| Environment | Sustainable resource |
| Flame resistance | BS 5852 Crib 5, BS 5852 part 1, DIN 4102 B2, EN 1021-1/2, IMO FTP Code 2010 Part 8, NF D 60 013, UNI 9175 1IM, US Cal. Bull. 117-2013, ÖNORM B1/ Q1 |
| Pilling | 3-4 |
| Lightfastness | 7 |
| More info | kvadratraftsimons.com |
| Total no of colours | 10 |



351
Clay



981
Ancient green



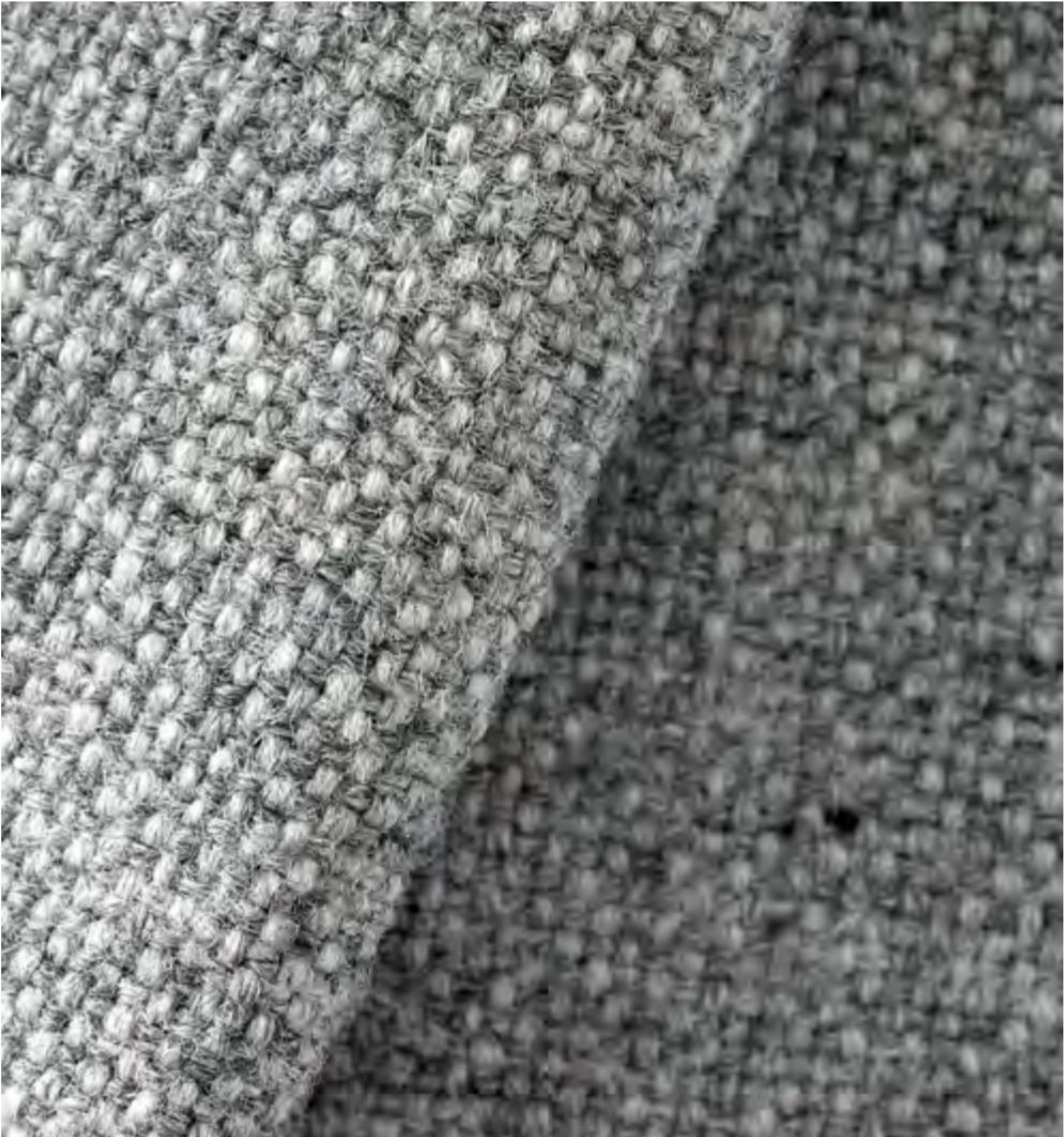
131
Cold grey



191
Navy blue

HALLINGDAL 65

Fabric Group 2



| | |
|---------------------|--|
| About | Classic wool-viscose blend with voluminous grip and a large scale of colour blends. Suitable for all upholstery. Designed by Nanna Ditzel in 1965. |
| Application | A B C D |
| Composition | 70% wool, 30% viscose |
| Martindale | 100 . 000 |
| Environment | EU Ecolabel |
| Flame resistance | AS/NZS 1530.3, AS/NZS 3837, BS 5852 Crib 5, BS 5852 part 1, EN 1021-1/2, IMO FTP Code 2010 Part 8, NF D 60 013, NFPA 260, SN 198 898 5.3 with treatment, UNI 9175 1IM, US Cal. Bull. 117-2013, ÖNORM B1/ Q1, BS 5852 ignition source 3 |
| Pilling | 3 |
| Lightfastness | 7 |
| More info | kvadrat.dk |
| Total no of colours | 56 |



110
Light sand



368
Dark brown



224
Camel



130
Cold grey



227
Clay



180
Charcoal



376
Dark brown

MOOD

Fabric Group 1



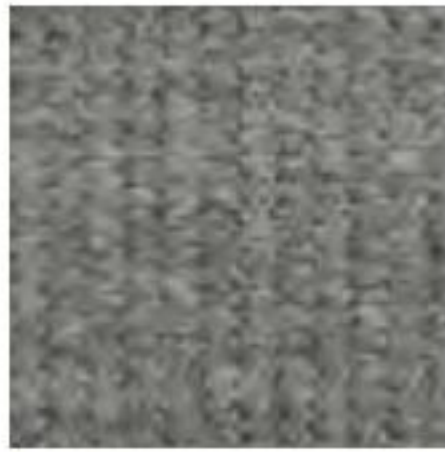
| | |
|---------------------|---|
| About | Wool fabric with a fluted surface structure. Natural and burnt colour shades. |
| Application | A B C D |
| Composition | 92% wool, 8% polyamide |
| Martindale | 90 . 000 |
| Environment | EU Ecolabel |
| Flame resistance | BS EN 1021-2 Match, BS EN 1021-1 Cigarette, BS 5852 Part 1 0,1 Cigarette & match, BS 476 Part 7, class 1, Class Uno UNI 9175 Class 1 I EMME, CA TB 117-2013 |
| Pilling | 4 |
| Lightfastness | 5-7 |
| More info | gabriel.dk |
| Total no of colours | 31 |



4104
Camel



5105
Ancient green



1102
Cold grey



4106
Ocean



2104
Charcoal



1103
Powder nude



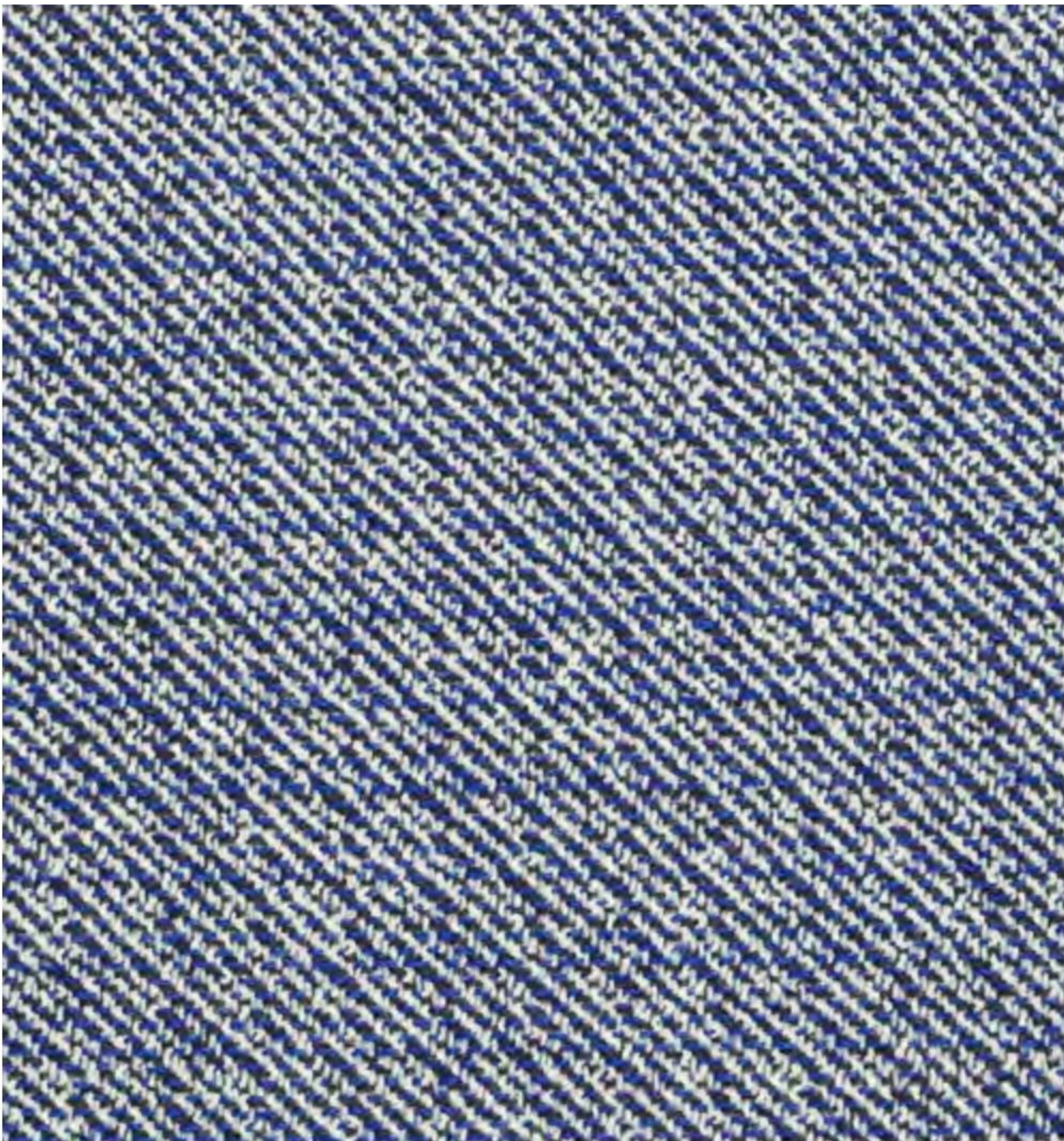
2107
Dusty blue



1105
Powder nude

NOISE

Fabric Group 5



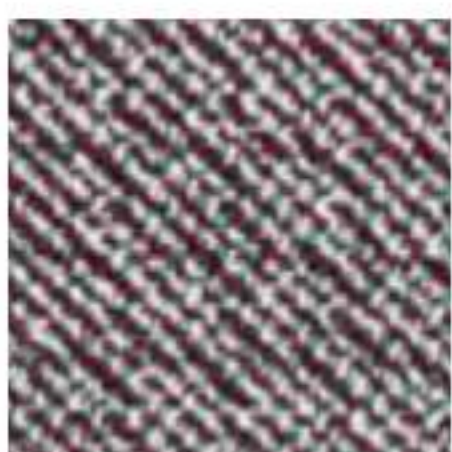
| | |
|---------------------|---|
| About | Wool blend in which strong diagonal stripes are broken up by flecks of sharp or neutral colours. |
| Application | A B C D |
| Composition | 96% wool, 4% polyamide |
| Martindale | 30.000 |
| Environment | EU Ecolabel |
| Flame resistance | BS 5852 part 1, DIN 4102 B2, EN 1021-1/2, IMO FTP Code, 2010 Part 8, NF D 60 013, UNI 9175 1IM, US Cal. Bull. 117-2013, BS 5852 Crib 5 with treatment |
| Pilling | 4 |
| Lightfastness | 6-7 |
| More info | kvadratrafsimons.com |
| Total no of colours | 10 |



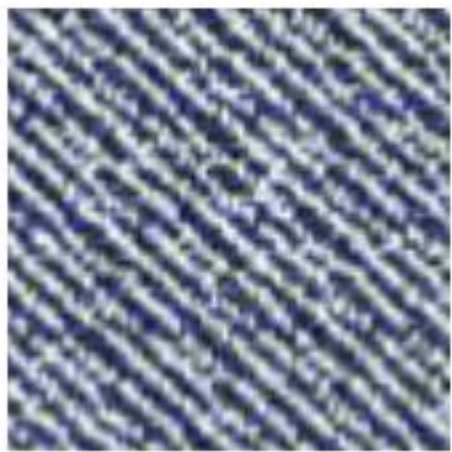
132
Clay



222
Camel



852
Deep red



742
Navy blue

REFLEX

Fabric Group 5



| | |
|---------------------|--|
| About | Wool textile with 10cm-wide strips of embroidery executed in a slightly irregular yarn. |
| Application | A C D E |
| Composition | 87% wool, 8% viscose, 5% polyamide |
| Martindale | 100.000 |
| Environment | Sustainable resource |
| Flame resistance | BS 5852 part 1, DIN 4102 B2, EN 1021-1/2, IMO FTP Code, 2010 Part 8, NF D 60 013, UNI 9175 1IM, US Cal. Bull., 117-2013, ÖNORM B2/Q1 |
| Pilling | 3-4 |
| Lightfastness | 7 |
| More info | kvadratrafsimons.com |
| Total no of colours | 10 |



339
Powder nude



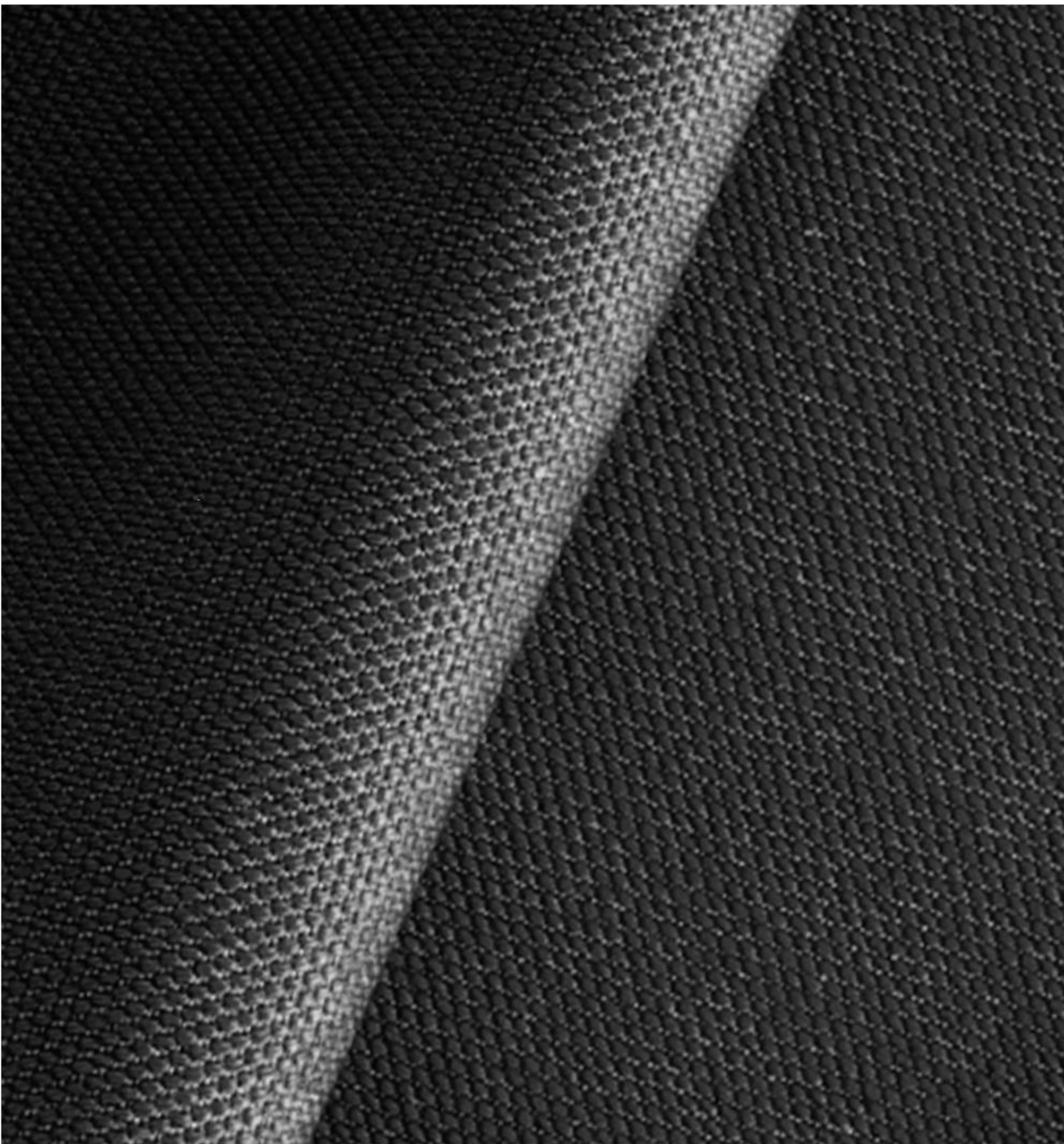
159
Jet black



199
Jet black

STEELCUT TRIO 3

Fabric Group 2



| | |
|---------------------|---|
| About | Tightly woven wool textile in three-colour mix. |
| Application | A B C D |
| Composition | 90% wool, 10% polyamide |
| Martindale | 100 .000 |
| Environment | EU Ecolabel |
| Flame resistance | AS/NZS 3837, class 2, BS 5852 part 1, EN 1021-1/2, IMO FTP Code 2010 Part 8, NF D 60 013, NFPA 260, SN 198 898 5.3 with treatment, UNI 9175 1IM, US Cal. Bull. 117-2013 ÖNORM B1/ Q1, BS 5852 Crib 5 with treatment, AS/NZS 1530.3, BS 5852 ignition source 3 |
| Pilling | 4 |
| Lightfastness | 5 |
| More info | kvadrat.dk |
| Total no of colours | 54 |



TONUS 4

Fabric Group 2

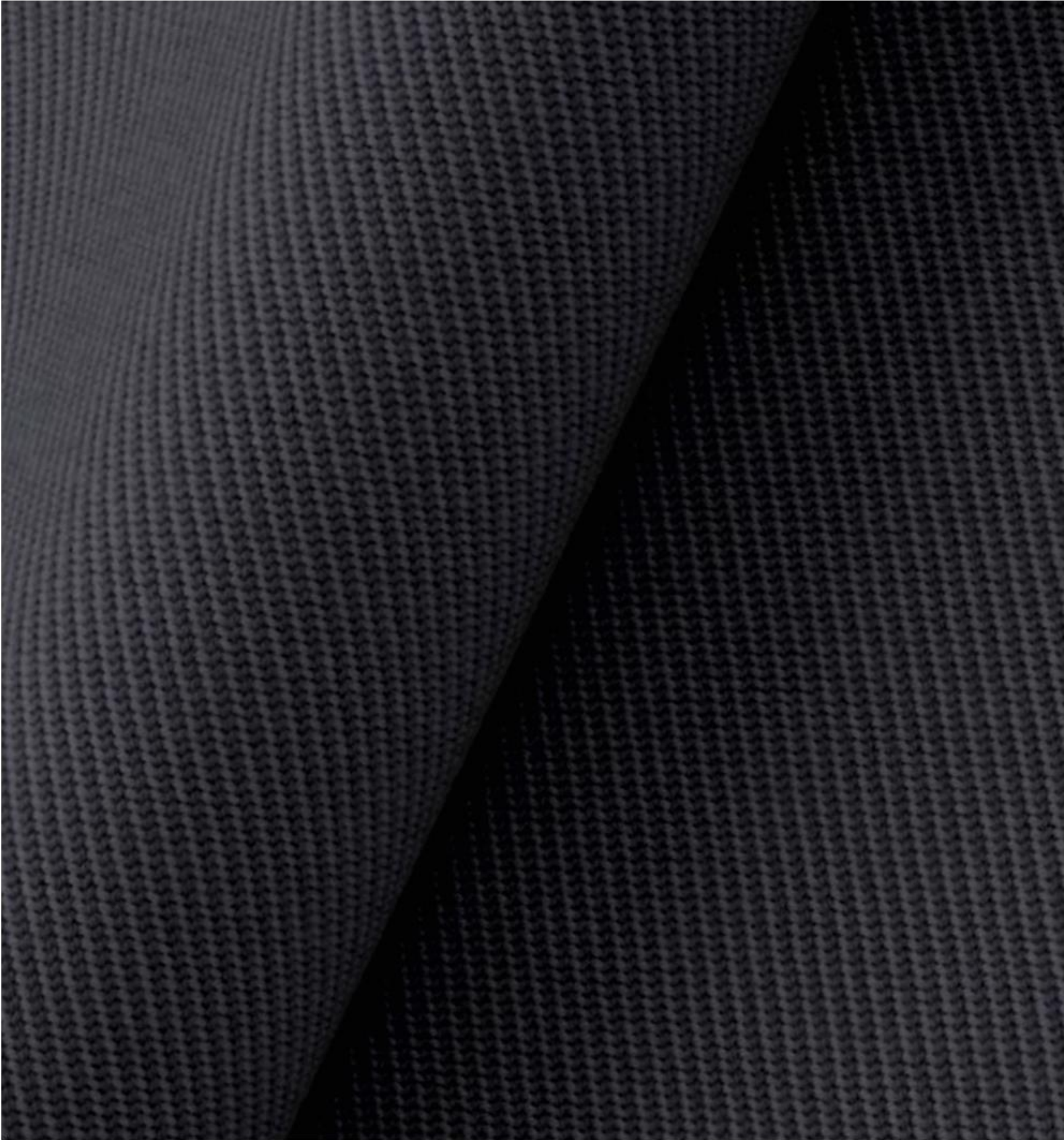


| | |
|---------------------|--|
| About | Classic plain-weave wool fabric with a comfortable soft touch and luxurious density. |
| Application | A B C |
| Composition | 90% wool, 10% helanca |
| Martindale | 100 .000 |
| Environment | EU Ecolabel |
| Flame resistance | AS/NZS 1530.3, BS 5852 part 1, EN 1021-1/2, IMO FTP Code 2010 Part 8, NF D 60 013, NFPA 260, SN 198 898 5.3 with treatment, UNI 9175 1IM, US Cal. Bull. 117-2013, ÖNORM B1/ Q1, BS 5852 Crib |
| Pilling | 3 |
| Lightfastness | 6-7 |
| More info | kvadrat.dk |
| Total no of colours | 47 |



TWILL WEAVE

Fabric Group 3



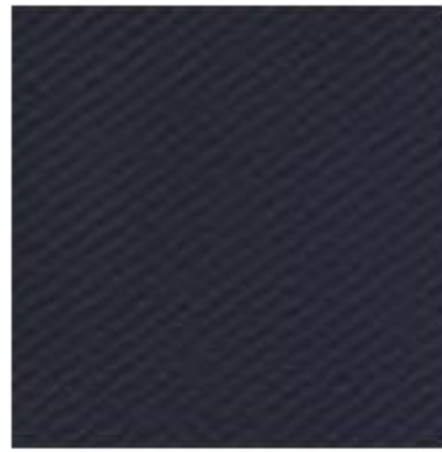
| | |
|---------------------|--|
| About | Classic twill textile woven in two related colours creating beautiful colourways. Large wool content creates a “heavy” textile with an elegant fit. |
| Application | A B C D E |
| Composition | 90% wool, 10% polyamid |
| Martindale | 60.000 |
| Environment | EU Ecolabel |
| Flame resistance | AS/NZS 1530.3, BS 5852 ignition source 3, BS 5852 part 1, EN 1021-1/2, IMO FTP Code 2010 Part 8, US Cal. Bull., 117-2013, NF D 60 013, UNI 9175 1IM, BS 5852 Crib 5, SN 198 898 5.3 with treatment, AS/NZS 3837, class 3 |
| Pilling | 3-4 |
| Lightfastness | 6-7 |
| More info | kvadrat.dk |
| Total no of colours | 19 |



190
Charcoal



570
Deep red



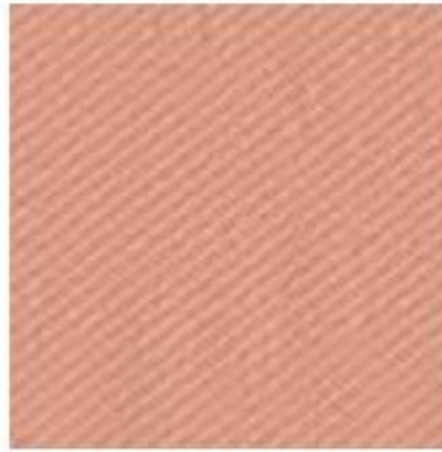
790
Navy blue



990
Ancient green



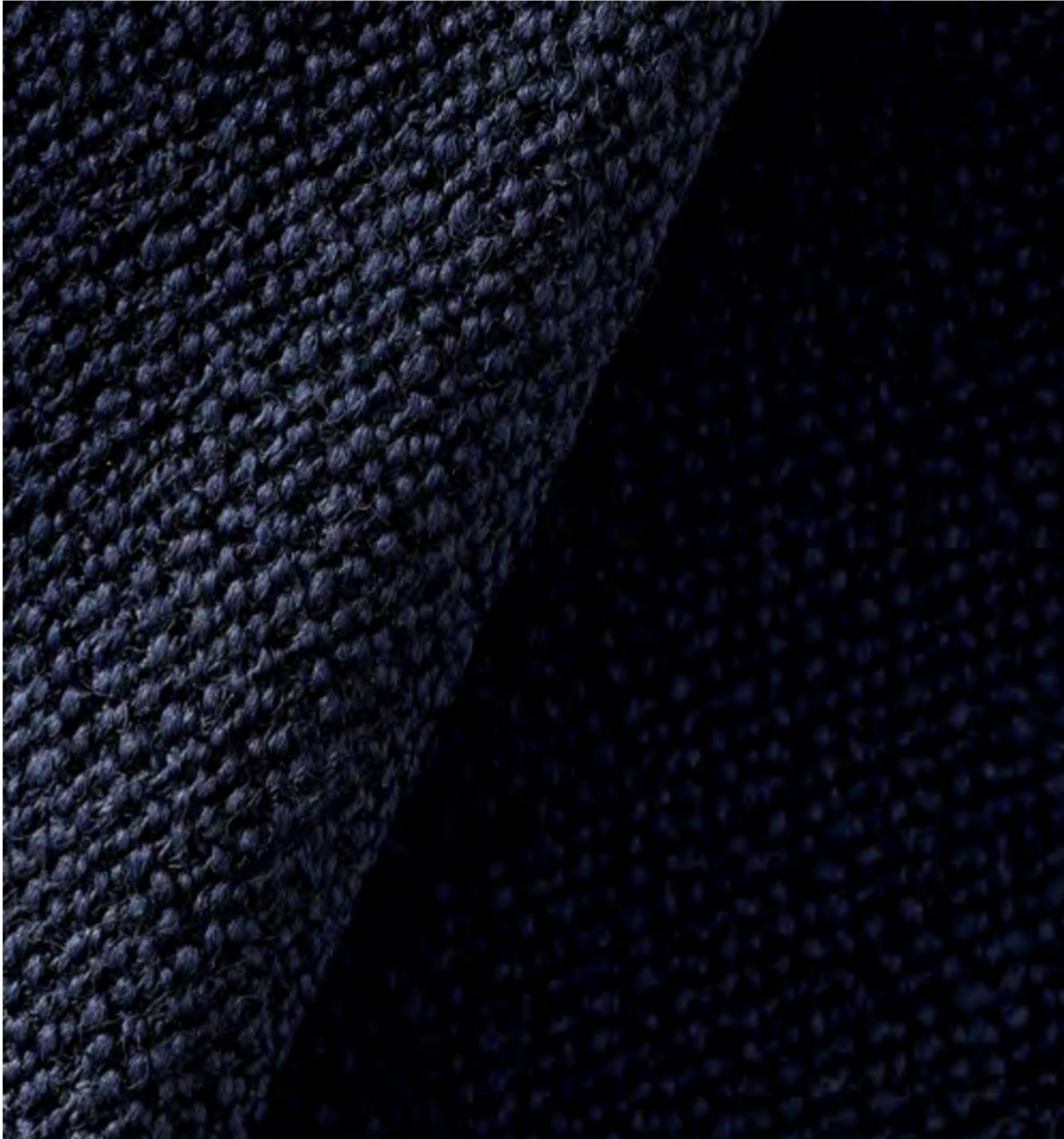
940
Ocean



530
Powder nude

VIDAR 3

Fabric Group 3



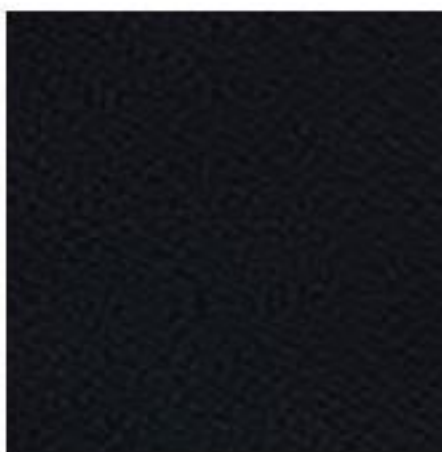
| | |
|---------------------|---|
| About | Elegant tightly woven wool textile with a matt, harmonious surface and a beautiful crepe texture. |
| Application | A B C D E |
| Composition | 94% wool, 6% polyamide |
| Martindale | 100.000 |
| Environment | EU Ecolabel |
| Flame resistance | DIN 4102 B2, EN 1021-1/2, IMO FTP Code 2010 Part 8, NF D 60 013, UNI 9175 1IM, US Cal. Bull. 117-2013, BS 5852 part 1, NFPA 260, BS 5852 Crib 5 |
| Pilling | 4 |
| Lightfastness | 5-6 |
| More info | kvadrat.dk |
| Total no of colours | 31 |



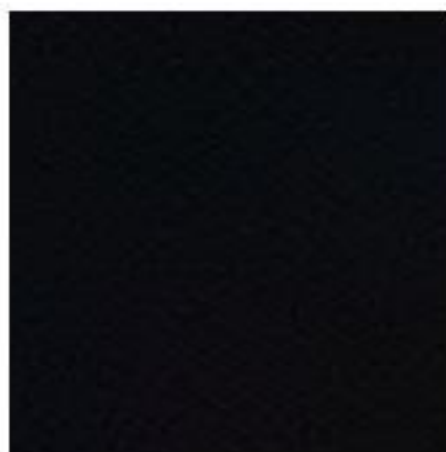
333
Camel



353
Camel



182
Charcoal



1880
Jet black



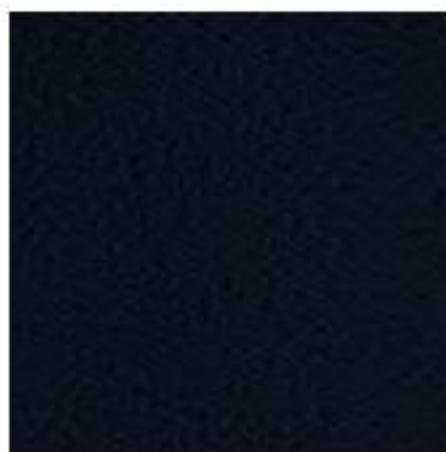
582
Deep red



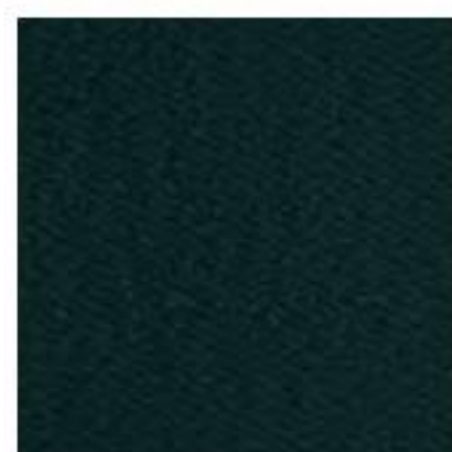
472
Cognac



972
Olive



554
Navy blue



1062
Ancient green



733
Dusty blue

AGUILA

Fabric Group 2



| | |
|---------------------|---|
| About | Viscose- and cotton union with an outspoken woven structure that creates an Italian flair. Made in Italy and supplied directly to Fredericia. |
| Application | A B C D |
| Composition | 60% viskose, 20% bomuld, 17% polyester, 3% linen |
| Martindale | 90.000 |
| Environment | Oeko-Tex |
| Flame resistance | BS 5852 : 2006 - Source 0, BS 5852 : 2006 - Source 1 |
| Pilling | 4 |
| Lightfastness | 5 |
| More info | fredericia.com |
| Total no of colours | 2 |



201
Light sand



210
Light sand

MAPLE

Fabric Group 1



| | |
|---------------------|---|
| About | Viscose/linen chenille with a soft touch. Discrete two-tone colour shades. |
| Application | A B C D |
| Composition | 81% viscose, 15% linen, 4% polyester |
| Martindale | 30.000 |
| Environment | Sustainable resource |
| Flame resistance | BS 5852 part 1, EN 1021-1/2, IMO FTP Code 2010 Part 8, BS 5852 Crib 5 with treatment, AS/NZS 1530.3, AS/NZS 3837, class 2, NFPA 260, US Cal. Bull. 117-2013 |
| Pilling | 4-5 |
| Lightfastness | 5 |
| More info | kvadrat.dk |
| Total no of colours | 26 |



222
Light sand



722
Cold grey

RUSKIN

Fabric Group 1



| | |
|---------------------|--|
| About | Soft and elegant textile combining viscose and linen creating motion and depth in the colourways. Discrete yet visible surface structure. |
| Application | A B C D E |
| Composition | 70% viscose, 15% linen, 10% wool, 5% polyamide |
| Martindale | 60.000 |
| Environment | EU Ecolabel |
| Flame resistance | Bs 5852 Part 1 Ign 0, Bs 5852 Part 1 Ign 1 With Treatment, Bs 5852 Part 1 Exempt, Bs 5852 Part 2 Ign 5 Crib Contract Upholstery With Treatment |
| Lightfastness | 5 |
| More info | romo.com |
| Total no of colours | 40 |



10
Light sand



15
Light sand



16
Cold grey



33
Clay



34
Charcoal

SONAR 3

Fabric Group 5



| | |
|---------------------|--|
| About | Sonar 3 is made of bouclé yarns. The dominant colours of the colourways are tempered by complementary and contrasting colors that create a vital and elegant overall effect. Not suitable for hard public use. |
| Application | A B C D E |
| Composition | 59% wool, 25% viscose, 9% linen, 5% polyamide, 2% polyester |
| Martindale | 20.000 |
| Environment | Sustainable resource |
| Flame resistance | BS 5852 part 1, EN 1021-1/2, IMO FTP Code 2010 Part 8, UNI 9175 1IM, US Cal. Bull. 117-2013, BS 5852 Crib 5 with treatment, AS/NZS 3837, class 2 |
| Pilling | 3-4 |
| Lightfastness | 7 |
| More info | kvadratraftsimons.com |
| Total no of colours | 17 |



792
Navy blue



113
Powder nude

SAVANNA

Fabric Group 2



| | |
|---------------------|---|
| About | Mixed content webbed fabric with a "heavy grain" and natural colour shades. |
| Application | A B C D |
| Composition | 34% polyester, 31% wool, 26% acrylic, 3% polyamide, 2% linen |
| Martindale | 45 . 000 |
| Flame resistance | BS 5852 part 1 with treatment, BS 5852 part 1, ig. s. 0, EN 1021-1/2, NF D 60 013 with treatment, SN 198 898 5.3 with treatment, US Cal. Bull. 117-2013, BS 5852 Crib 5 |
| Pilling | 3 |
| Lightfastness | 6-7 |
| More info | kvadrat.dk |
| Total no of colours | 12 |



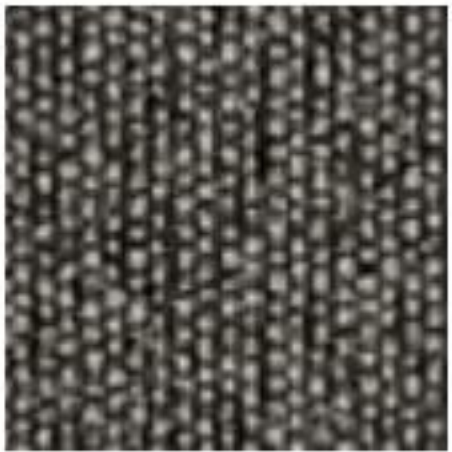
122
Light sand



242
Clay



192
Charcoal



152
Jet black



622
Deep red

SUNNIVA 2

Fabric Group 2



| | |
|---------------------|---|
| About | Wool/viscose/linen mix with a classic look and natural shine. Natural and subtle colourways. |
| Application | A B C D E |
| Composition | 58% wool, 25% viscose, 8% linen, 5% polyamide, 4% polyester |
| Martindale | 50 . 000 |
| Environment | Sustainable resource |
| Flame resistance | BS 5852 part 1, ig. s. 0, EN 1021-1/2, US Cal. Bull. 117-2013 NFPA 260, IMO FTP Code 2010 Part 8, AS/NZS 3837, class 2, BS 5852 Crib 5 with treatment |
| Pilling | 3 |
| Lightfastness | 5-6 |
| More info | kvadrat.dk |
| Total no of colours | 24 |



717
Light sand



242
Cold grey



1079
Charcoal



172
Dusty blue



752
Dusty blue



192
Navy blue



132
Ocean

SINEQUANON

Fabric Group 3



| | |
|---------------------|--|
| About | Linen-viskose union with yarns in two-tone, creating a sophisticated colour range with a subtle shine. Comes with waterrepellent treatment which offers specific protection from liquids and oils. Not suitable for hard public use. |
| Application | A B C D E |
| Composition | 60% viscose, 16% linen, 13% cotton, 6% polyacrylic, 5% polyester |
| Martindale | 35 . 000 |
| Flame resistance | BS 5852 PART 1 IGN 0 CIGARETTE, BS 5852 PART 1 IGN 1 MATCH |
| More info | dedar.com |
| Total no of colours | 36 |



01
Light sand



24
Olive



16
Powder nude



37
Camel



13
Navy blue



25
Clay



23
Ancient green



02
Black brown



21
Ocean

TOSCA

Fabric Group 4



| | |
|---------------------|---|
| About | A rustic textile with structure woven from coarse yarns that combine linen and wool. Dyed with plant colors in natural tones. |
| Application | A B C D |
| Composition | 63% linen, 29% wool, 5% polyamide, 3% cotton |
| Martindale | 100 . 000 |
| Flame resistance | BS 5852 PART 1 IGN 0 CIGARETTE, BS 5852 PART 1 IGN 1 MATCH, BS 5852 PART 2 IGN 5 CRIB CONTRACT UPHOLSTERY with treatment |
| Lightfastness | 5 |
| More info | romo.com |
| Total no of colours | 24 |



04
Light sand



07
Clay



21
Camel

CARLOTTO

Fabric Group 2



| | |
|---------------------|--|
| About | Voluminous wool bouclé with a very soft surface and structure. High wear resistance and suitable for both private and public use. Made in Italy and supplied directly to Fredericia. |
| Application | A B C D |
| Composition | 38% wool, 37% polyacrylic, 18% polyester, 7% cotton |
| Martindale | 100 .000 |
| Environment | Oeko-Tex |
| Flame resistance | BS 5852 : 2006 - Source 0, BS 5852 : 2006 - Source 1 |
| Pilling | 4 |
| Lightfastness | 4-5 |
| More info | fredericia.com |
| Total no of colours | 6 |



200
Light sand



404
Clay



400
Dark brown



110
Jet black



900
Olive



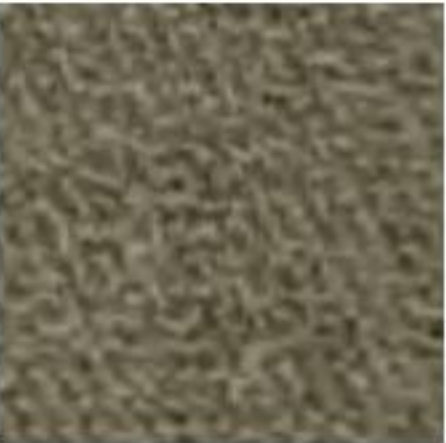
800
Navy blue

COBBLESTONE

Fabric Group 4



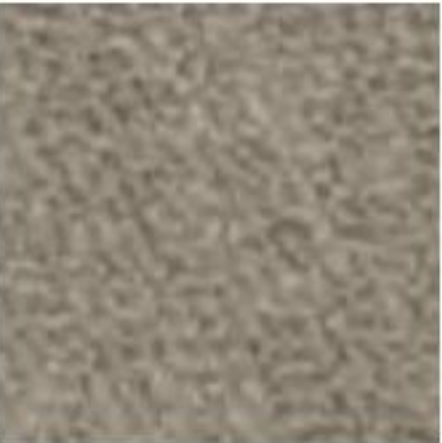
| | |
|---------------------|---|
| About | A densely woven, chunky upholstery wool boucle with a relaxed appearance. Suitable for all upholstery except for dominant pipings. Not suitable for public use. |
| Application | A B C D |
| Composition | 75 % wool, 15% cotton, 10% polyamide |
| Martindale | 40 .000 |
| Environment | Sustainable resource |
| Flame resistance | BS 5852 Part 1 Ign 0 Cigarette, BS 5852 Part 1 Ign 1 Match, BS 5852 Part 2 Ign 5 Crib Contract Upholstery |
| Lightfastness | 5 |
| More info | romo.com |
| Total no of colours | 13 |



10
Olive



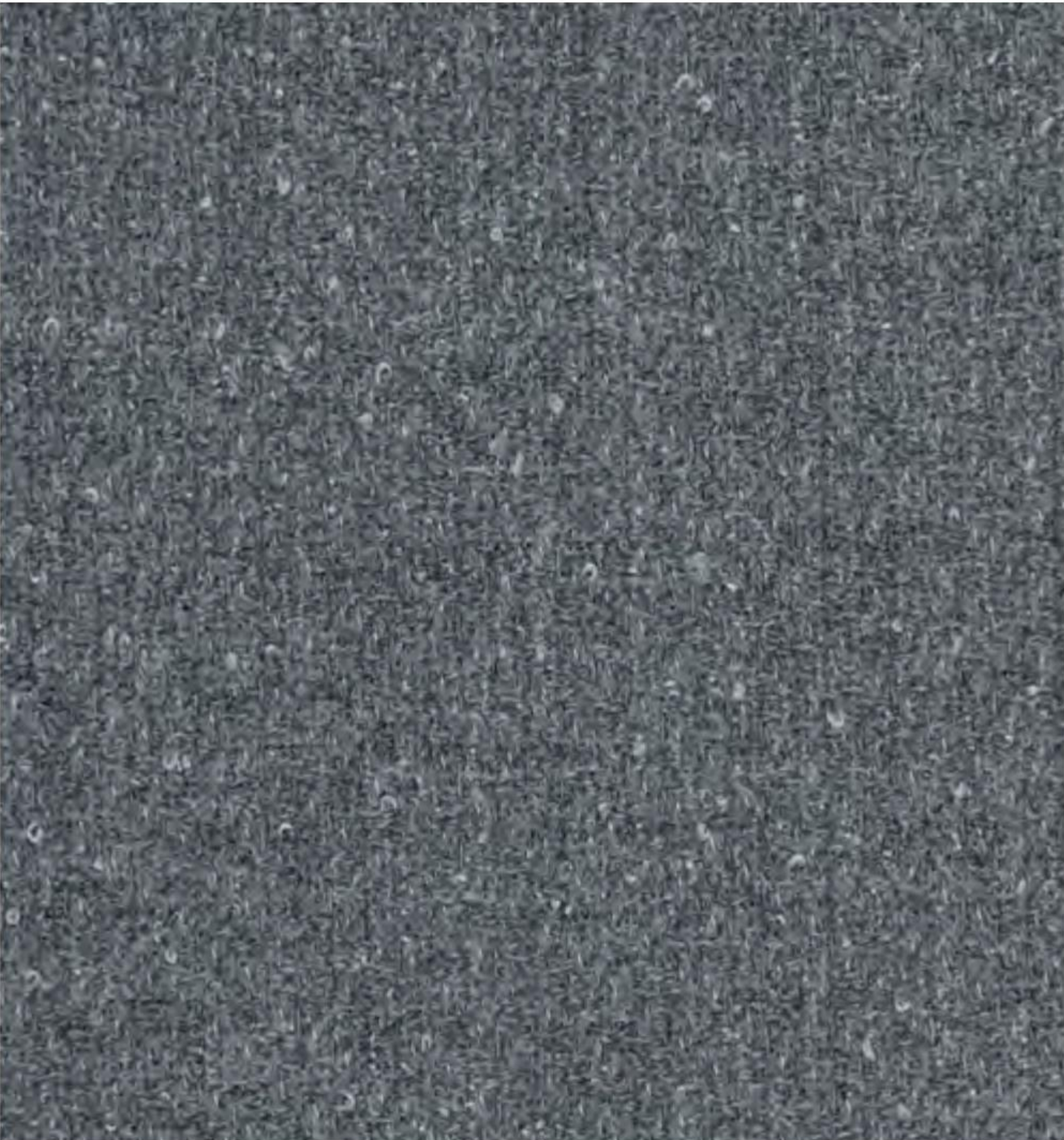
11
Clay



2
Cold grey

PILOT

Fabric Group 5



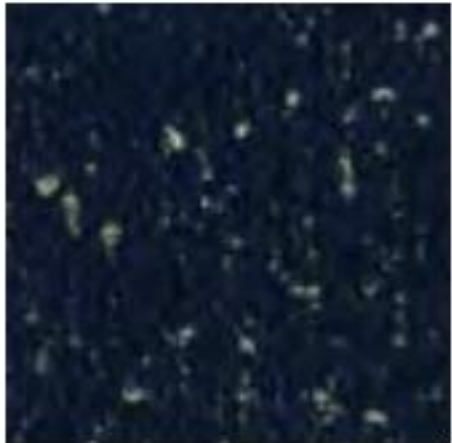
| | |
|---------------------|--|
| About | This bouclé fabric marries the softness and intense colour of merino wool to the lustre of contrasting yarns. Suitable for all upholstery. |
| Application | A B C D E |
| Composition | 82% wool, 10% polyester, 8% polyamide1 |
| Martindale | 70.000 |
| Environment | Sustainable resource |
| Flame resistance | BS 5852 part 1, DIN 4102 B2, EN 1021-1/2, IMO FTP Code 2010 Part 8, UNI 9175 1IM, US Cal. Bull. 117-2013, ÖNORM B1/ Q1, AS/NZS 3837, class 2, BS 5852 Crib 5 |
| Pilling | 4 |
| Lightfastness | 7 |
| More info | kvadrat.dk |
| Total no of colours | 10 |



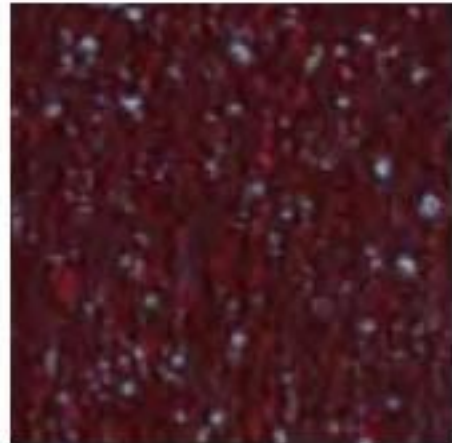
132
Cold grey



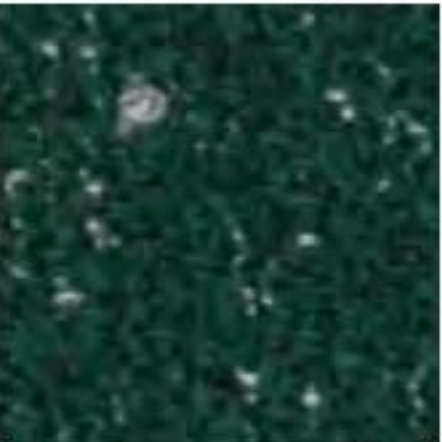
162
Charcoal



792
Navy blue



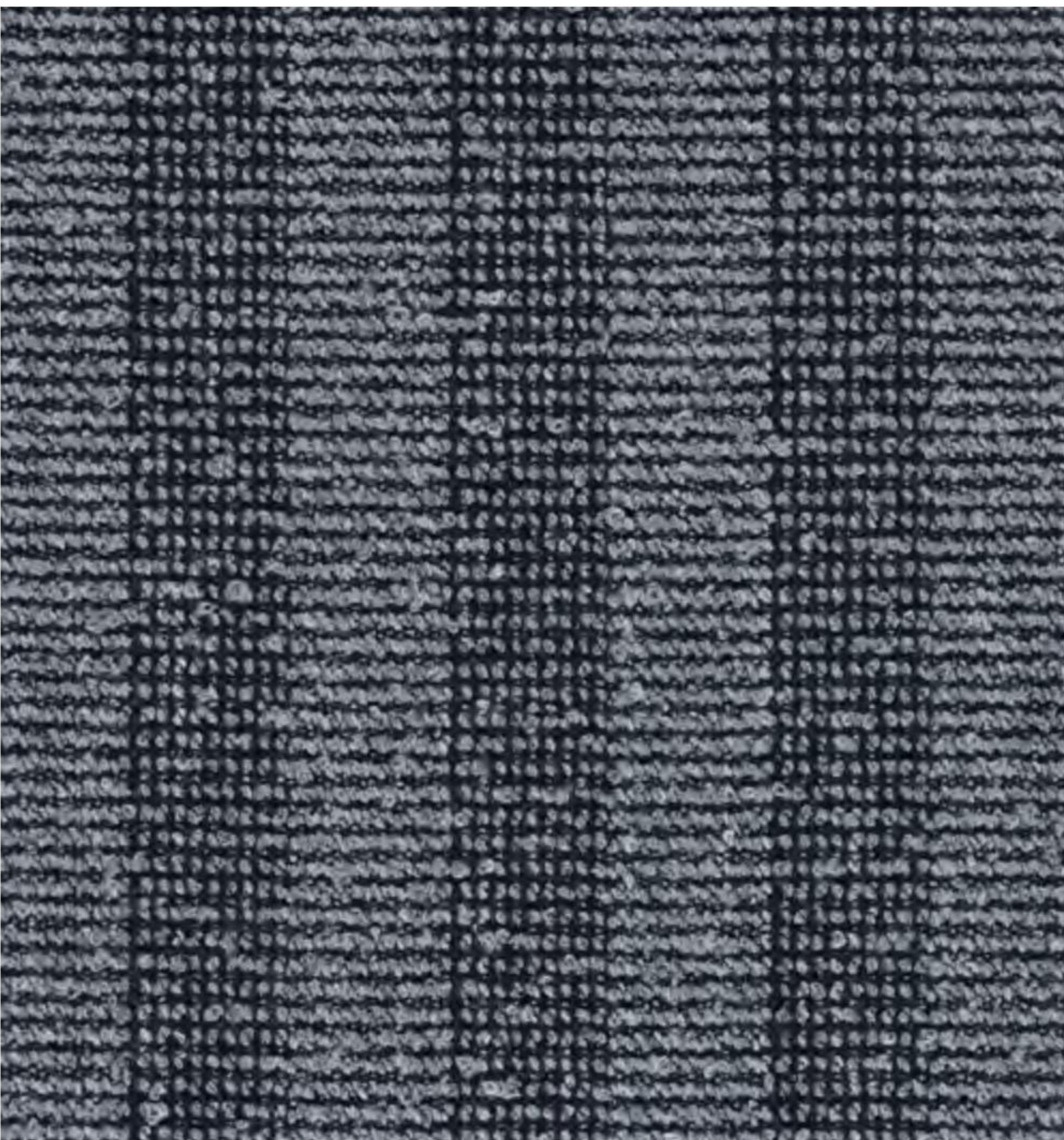
582
Dark red



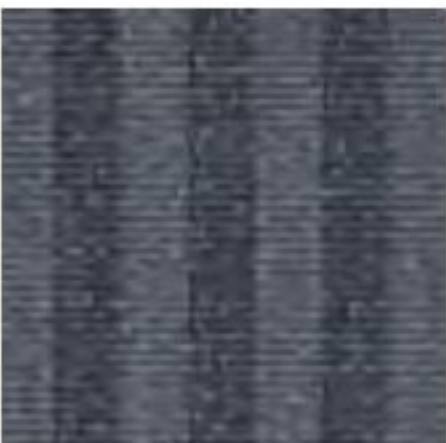
972
Ancient green

PULSAR

Fabric Group 5



| | |
|---------------------|--|
| About | Bouclé combined with stripes, creating a pulsing pattern. |
| Application | A C D E |
| Composition | 90% wool, 8% polyamide, 2% polyester |
| Martindale | 100.000 |
| Environment | Sustainable resource |
| Flame resistance | BS 5852 part 1, DIN 4102 B2, EN 1021-1/2, IMO FTP Code, 2010 Part 8, NF D 60 013, UNI 9175 1IM, US Cal. Bull., 117-2013, ÖNORM B1/ Q1, BS 5852 Crib 5 with treatment |
| Pilling | 4 |
| Lightfastness | 7 |
| More info | Kvadrat.dk |
| Total no of colours | 11 |



169
Cold grey



179
Charcoal



189
Navy blue

BYRAM

Fabric Group 5



| | |
|---------------------|---|
| About | Mohair velor with a very close pile that gives a great color depth. Suitable for all upholstery, but not on prominent pipings. |
| Application | A B C D |
| Composition | 65% wool, 23% cotton, 8% viscose, 4% polyamide |
| Martindale | 70.000 |
| Environment | Sustainable resource |
| Flame resistance | AS/NZS 1530.3, BS 5852 Crib 5, BS 5852 part 1, BS 5867 part 2 type B, EN 1021-1/2, IMO FTP Code 2010 Part 8, NF D 60 013, UNI 9175 1IM, US Cal. Bull. 117-2013, SN 198 898 5.3 with treatment |
| Pilling | 4-5 |
| Lightfastness | 4 |
| More info | kvadrat.dk |
| Total no of colours | 19 |



361
Clay



171
Dusty blue



391
Dark brown



791
Navy blue



191
Jet black



981
Olive

GRAND MOHAIR

Fabric Group 4



| | |
|---------------------|---|
| About | Mohair velvet with a tight and elegant pile. Suitable for all upholstery except for dominant pipings. |
| Application | A B |
| Composition | 100% mohair (pile), 100% cotton (base) |
| Martindale | +100.000 (Wyzenbeek) |
| Environment | Oeko-tex |
| Flame resistance | Cal 117-2013, NFPA 260, Class 1, BS 5852: 2006, clause 11, Crib 5, EN 1021, 1 & 2, IMO A. 652 |
| Pilling | - |
| Lightfastness | 4-5 |
| More info | daw.dk |
| Total no of colours | 36 |



2001
Camel



9103
Olive



2103
Cognac



2600
Cognac

HARALD

Fabric Group 2



| | |
|---------------------|--|
| About | Cotton velour with a tight pile. Velour can acquire press marks either from transport or in use. Suitable for domestic to moderate public use. |
| Application | A B D E |
| Composition | 100% Cotton |
| Martindale | 100 .000 |
| Environment | Sustainable resource |
| Flame resistance | EN 1021-1, AS/NZS 1530.3, AS/NZS 3837, class 1 |
| Pilling | 4-5 |
| Lightfastness | 5 |
| More info | kvadrat.dk |
| Total no of colours | 30 |



343
Camel



242
Clay



283
Dark brown



192
Jet black



382
Deep red



182
Dusty blue



792
Royal blue



982
Ancient green



823
Ocean

COMFORT +

Fabric Group 3



| | |
|---------------------|--|
| About | Microfibre textile with a gentle surface and large colour scale. Anti-static and flame retardant backing. |
| Application | A B C |
| Composition | 88% polyester, 12% polyethane |
| Martindale | 100 .000 |
| Environment | Oeko-Tex |
| Flame resistance | BS 5852 Part 1 0,1 Cigarette & match, BS EN 1021 1&2 Cigarette and Match, BS EN 1021-1 Cigarette, ÖNORM B 3825-B2-3800-Q1 UK, NF P 92-503 M3, CA TB 117-2013 |
| Pilling | 5 |
| Lightfastness | 5-7 |
| More info | gabriel.dk |
| Total no of colours | 77 |



1161
Cold grey



9084
Camel



61002
Light sand



1153
Deep red



0005
Clay



8397
Olive



0049
Charcoal



9075
Dark blue



1160
Dusty blue



61013
Dark brown



0018
Ancient green



0034
Ocean

GRID

Fabric Group 2



| | |
|------------------|--|
| About | Special union between linen, polyester and polyamide gives a naturally flame retardant technical fabric with beautiful natural colourways. |
| Application | A B C D |
| Composition | 67% polyamide, 17% linen, 16% polyester |
| Martindale | 50.000 |
| Environment | Oeko-Tex |
| Flame resistance | BS 5852 Part 0+1 |
| Pilling | 4 |
| Lightfastness | 5-6 |
| More info | almedahls.se |
| No of colours | 24 |



8
Light sand



87
Clay



77
Dark brown



80
Cold grey



83
Charcoal



7
Camel



84
Dusty blue

MERIT

Fabric Group 2



| | |
|---------------------|--|
| About | Innovative textile made of 76% recycled polyester. Out-spoken yet harmonious surface structure in dual colours. |
| Application | A B C |
| Composition | 76% recycled polyester, 24% new polyester |
| Martindale | 100.000 |
| Environment | Greenguard Certification |
| Flame resistance | BS 476 part 7 + 6 with treatm, BS 5852 Crib 5 with treatment, BS 5852 part 1 with treatment, EN 1021-1/2, US Cal. Bull. 117-2013 |
| Pilling | 4 |
| Lightfastness | 7 |
| More info | kvadrat.dk / maharam.com |
| Total no of colours | 43 |



16
Cold grey



04
Jet black



39
Deep red



33
Cognac



12
Dusty blue



17
Ocean



30
Powder nude



29
Light sand

SMOKED OAK STAINED, LACQUERED



About European oak. Smoked oak stained is a stain treatment that resembles the colour of smoked oak. It is used in furniture where the natural variation in wood requires a more harmonious result than what fumed smoked oak can offer. Frederica uses a stain solution that enhances the warm tones of the oak and reveals the natural wood structure. After staining, the wood is covered with a delicate layer of lacquer. As a result, smoked oak stained is easy to maintain and able to resist stains and water quite well.

GREY OAK STAINED, LACQUERED



About European oak. A stain treatment that reveals the wood structure whilst adding grey tones to the surface. After staining, the wood is covered with a delicate layer of lacquer. As a result, grey oak stained is easy to maintain and able to resist stains and water quite well.

LIGHT GREY OAK STAINED, LACQUERED



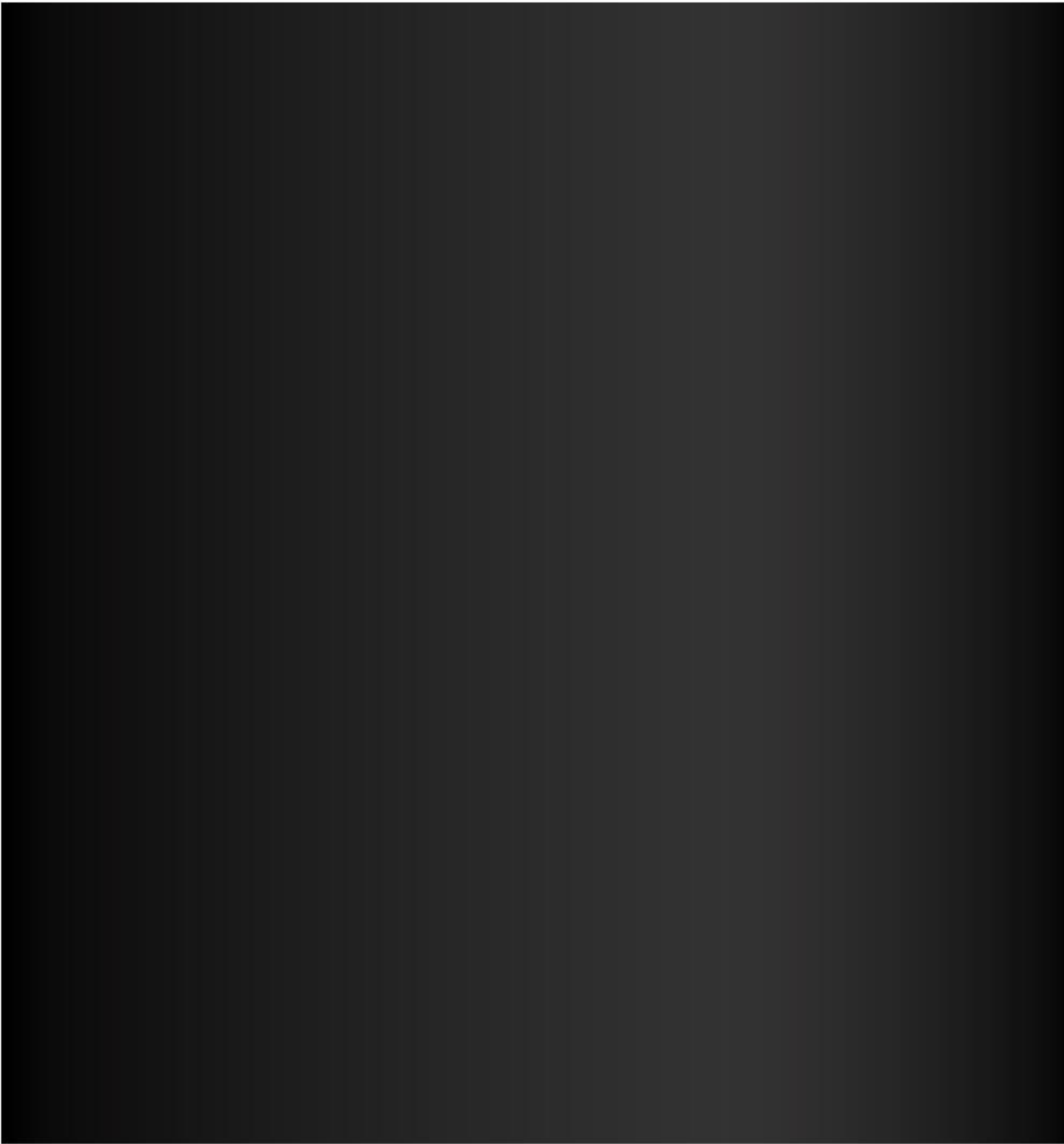
About European oak. A stain treatment that reveals the wood structure whilst adding light grey tones to the surface. After staining, the wood is covered with a delicate layer of lacquer. As a result, light grey oak stained is easy to maintain and able to resist stains and water quite well.

BLACK LACQUERED



About Black lacquer in RAL 9005 colour. After the black lacquer is applied to oak or ash, the grain structure of both will be visible. Applied to beech, the surface structure becomes more harmonious, where the visible grain structure is limited.

BLACK



About Powder-coated RAL 9005 with a smooth surface. Powder coating is the most environmentally-friendly surface finish available and can be used on both steel and aluminium parts.

SATIN BRASS



About Our Fredericia Satin brass surface finish is a special powder coat with a smooth surface. Satin brass can be compared with satin-chromed brass, however Satin brass has the environmentally-friendly features of powder coats which makes the application universal. Satin brass can be used on both steel and aluminium parts.

FLINT



About Our Fredericia Flint surface finish is a special powder coat with a smooth surface. Flint can be compared with so-called “gunmetal”, however Flint has the environmentally-friendly features of powder coats, which makes the application universal. Flint can be used on both steel and aluminium parts.

DARK BRONZE



About Our Fredericia Dark bronze surface finish is a special powder coat with a smooth surface. Dark bronze can be compared with the dark yet warm look of completely oxidised bronze, however Dark bronze has the environmentally-friendly features of powder coats, which makes the application universal. Dark bronze can be used on both steel and aluminium parts.