

Elements



kvadrat soft cells

Elements by Kvadrat Soft Cells

Sound control made easy

Elements by Kvadrat Soft Cells is a simple, modular wall system of acoustic panels that help improve sound quality in offices, meeting rooms and any other interior spaces. Built with the proven Soft Cells Broadline technology, the patented panels can be configured to provide Class-A sound absorption and contribute to increased well-being, motivation and productivity.

Due to the front textile layer, Elements also enhance the aesthetics of a room. Available in 15 panel sizes, 7 Kvadrat textiles and 263 colours, Elements make it easy to specify a solution that meets the acoustic and aesthetic needs of the space.

The Elements frames use over 40% recycled aluminium and are produced with minimal waste. Thanks to their sustainable design, Elements support accreditation under global building-certification systems, including DGNB, LEED, BREEAM and more.

- High performance acoustics – up to Class-A sound absorption
- 7 Kvadrat textiles and 263 colour options – all at the same price
- 15 panel sizes
- Easy to plan, purchase and install
- Simple sound control solution
- Sustainable design
- 10-year product warranty

Select from 15 panel sizes

	600 mm	1500 mm	2100 mm	2400 mm	3000 mm
600 mm					
900 mm					
1200 mm					

← Textile direction

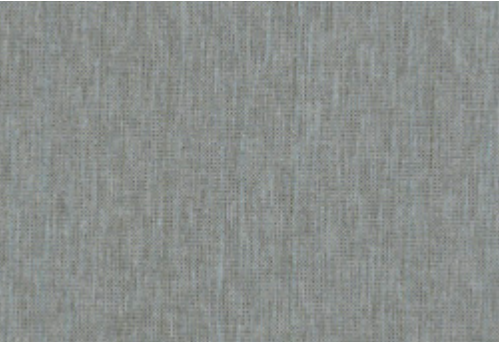


‘Soft Cells Elements were the first choice for us. They ensure optimal acoustics, fit perfectly with our innovative office concept, and create a harmonious and colourful background for video conferencing.’

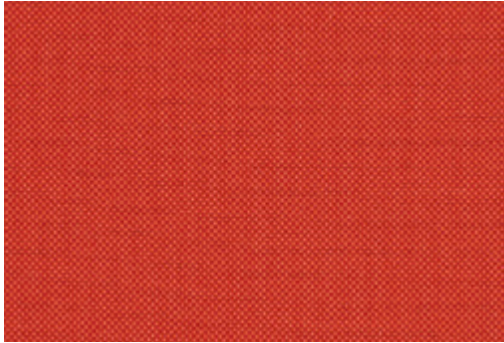
Andreas Heinkel
Senior Manager, Real Estate & Facilities EMEA, Citrix

Citrix, Citrix Real Estate & Facilities EMEA, Karlsruhe, Germany

Select from 7 Kvadrat textiles and 263 colours



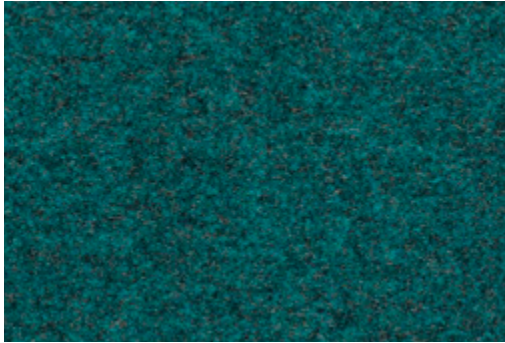
Casa
100% Trevira CS
13 colours
Design: Cristian Zuzunaga



Field 2
100% Trevira CS
30 colours
Design: Alfredo Häberli



Divina 3
100% New wool
56 colours
Design: Finn Sködt



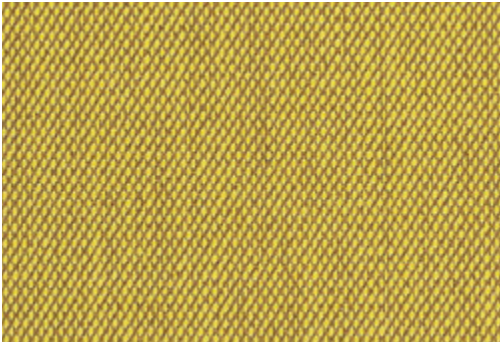
Divina MD
100% New wool
27 colours
Design: Finn Sködt



Divina Melange 3
100% New wool
38 colours
Design: Finn Sködt



Remix 2
90% New wool worsted, 10% nylon
49 colours
Design: Giulio Ridolfo



Steelcut Trio 3
90% New wool worsted, 10% nylon
49 colours
Design: Dijkmeijer & Ridolfo

For acoustic test results,
please visit www.softcells.com

Installation

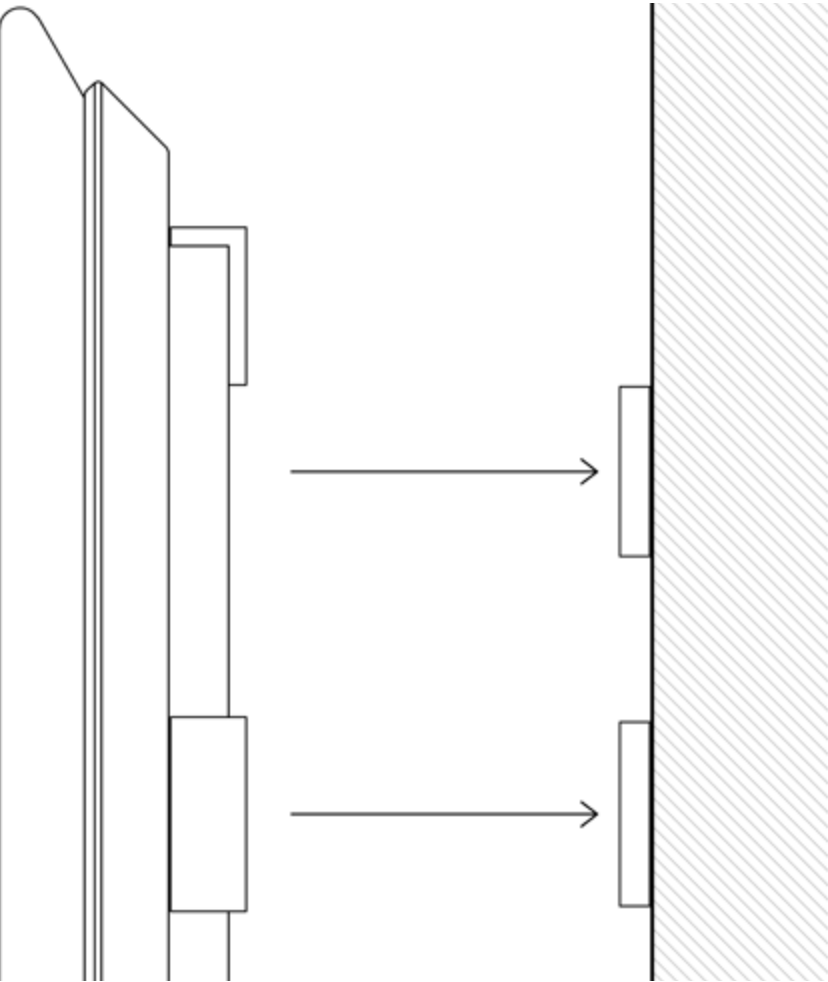
Elements are easy to install on walls. The magnets allow for quick and simple installation and dismantling.

Material: stainless steel magnets

Total depth of the panels from textile to installation surface: 55mm

Safety wires are required for installations above 3 metres from the ground

Full installation guide available for download at www.softcells.com



Please confirm local fire regulations before installing Soft Cells Elements



'There were high demands for the acoustic properties of the space. Kvadrat Soft Cells provided the ideal solution with Elements. The quality of materials and the wide selection of colours supported our decision to use Soft Cells.'

Lene Marie Kappel
Lead design Architect, C.F. Møller



Panum Institute, Copenhagen, Denmark, C.F. Møller Architects

About Kvadrat Soft Cells

Kvadrat Soft Cells has become a leading manufacturer of high performance bespoke acoustic solutions since its establishment by Kvadrat in 2006. Specified by renowned architects, Soft Cells can be found in offices, auditoriums, public areas, as well as landmark architecture all over the world, such as: The Royal Danish Library, Oxford University, PricewaterhouseCoopers, Rolls Royce, and Microsoft.

www.softcells.com

Selected Elements references

AOK Baden Württemberg, Germany
Citrix, Germany
Commerzbank, Prag
Dallmayr, Germany
Erste Bank, Filialen, Germany
Hahn Schickard, Germany
Häberlein & Maurer, Germany
Jeudan Domicile, Denmark
KEA Library, Denmark
Klauser Schuhe, Germany
Kredittgjenvinning AS, Norway
Kreissparkasse Tübingen, Germany

Kreissparkasse Waiblingen, Germany
Libratone office, Denmark
Liganova, Germany
Meerschaert Insurance, Belgium
Panum, Copenhagen University, Denmark
Pressehaus Stuttgart, Germany
Robert Bosch Stiftung, Germany
SAGA, Frankfurt
Shell Global Solutions
TenneT TSO GmbH, Bayreuth, Germany
White & Case, United Kingdom



Photography by: Oliver Heinemann Architectural Photography

