



WIND
Room divider
By Jin Kuramoto

PRODUCT INFORMATION

Jin Kuramoto's Wind room divider is an innovative concept for controlling acoustics in public spaces and meeting venues, a market which Offecct has pioneered. The dividers improve the acoustic qualities of an environment, while at the same time adding interesting dimensions to the room.

"These dividers can be seen as a celebration of nature and its beauty and wisdom," says Jin Kuramoto. "My inspiration always comes from nature. There is nothing more beautiful than a snowflake, a beehive or a leaf. I see these dividers as a forest of organic shapes that also control acoustics, like a kind of tuner, like trees in the forest, making the environment more pleasant and friendly. The dividers should play a supporting role, not symbolic, and very functional."

"I think it is very nice to have the dividers as reminders of nature's beauty in, say, a hospital or in a large office landscape. They also make it possible to speak in a normal tone of voice even in acoustically chaotic environments. When sitting down in a chair or sofa, the divider feels like a wall. When standing up it can be seen from far away in a room. The heights of the dividers are very carefully calculated."

Wind was part of the Offecct Lab collection in 2016 and has been tested extensively in various public meeting places throughout the year. "It's been fantastic to see how well it has tested in improving acoustic values," says Anders Englund, Design Manager at Offecct.

TECHNICAL INFORMATION

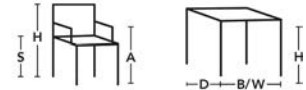
Fully upholstered room divider with a zipper. Frame in metal. Foot in concrete with a bottom in felt. Standard fabric Camira Cara EJ192, EJ190, EJ138. Available in 5 different sizes.



CAMIRA CARA

CONCRETE

WIND



H 1090, W 1070, D 300, Model D

H 1380, W 1150, D 300, Model A



H 1560, W 1060, D 300, Model B

H 1180, W 1160, D 300, Model C

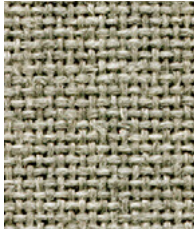


H 1680, W 775, D 300, Model E

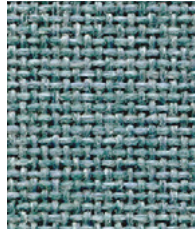


Cara

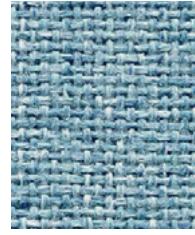
camira



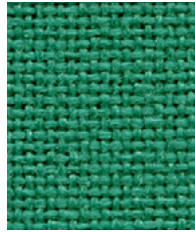
Spray
EJ033



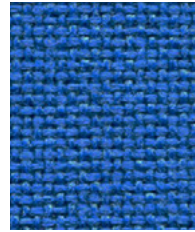
Ronay
EJ189



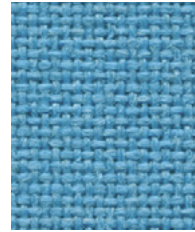
Dolphin
EJ105



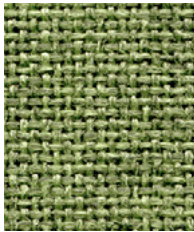
Carron
EJ015



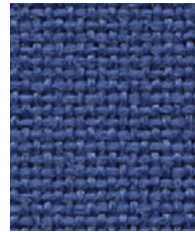
Galilee
EJ125



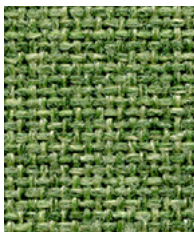
Inverness
EJ175



Fair Isle
EJ186



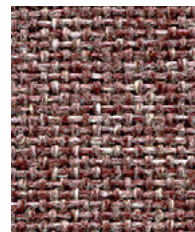
Adriatic
EJ154



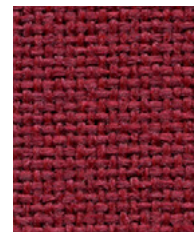
Staffa
EJ185



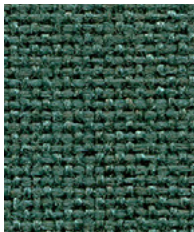
Easdale
EJ188



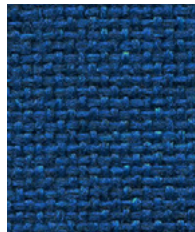
Lossie
EJ197



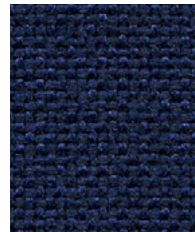
Tummel
EJ038



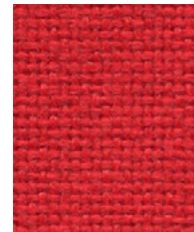
Lora
EJ187



Cluanie
EJ180



Walten
EJ011

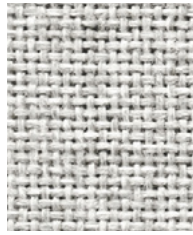


Pitlochry
EJ076

Photographic fabric scans are not colour accurate. Always request actual fabric samples before ordering.



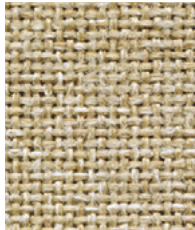
Vit
EJ184



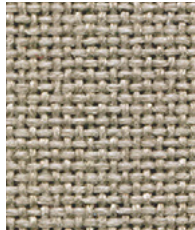
Glass
EJ004



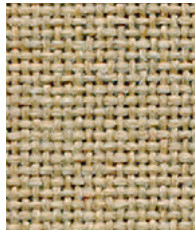
Hillswick
EJ190



Lomond
EJ192



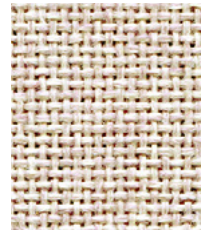
Shetland
EJ191



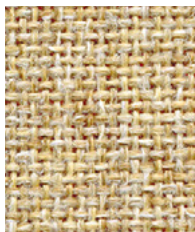
Beltane
EJ193



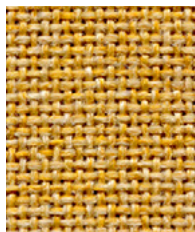
Chaucer
EJ172



Clan
EJ169



Austen
EJ173



Maree
EJ195



Portland
EJ016



Denny
EJ196



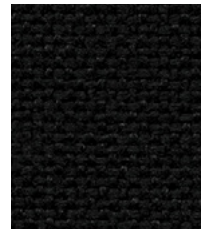
Lerwick
EJ194



Merrick
EJ048



Lead
EJ104



Black
EJ138