

YOU AND ME RUG

By Karim Rashid

Sloo creates a state between liquid plastic and solid material object. Plastic loves to flow, to be amorphous. We too are amorphous so the relationship is symbiotic. The results are organic forms that softly merge in and out of flat, smooth surfaces. The overall feeling creates a state of endlessness, a continual ephemeral experience. Its material allows for indoor or outdoor use, as the polyethylene resin is highly resistant to impacts and extreme temperatures. Its wide range of finishes and colors allows the creation of different spaces easily.

View online: <https://www.vondom.com/products/62004>

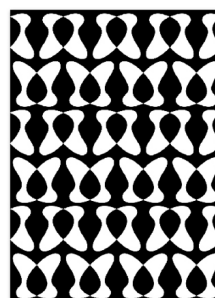
Features

Description

Product designed by soft and resistant to UV rays Polyethylene fibres

Weight

17 Kg



2X2,7 m
78¾" x 106¼"

YOU AND ME
YOU AND ME

Finishes

BASIC

Ref. 62004

Matt Polyethylene

COLOR

BLACK

BASIC



