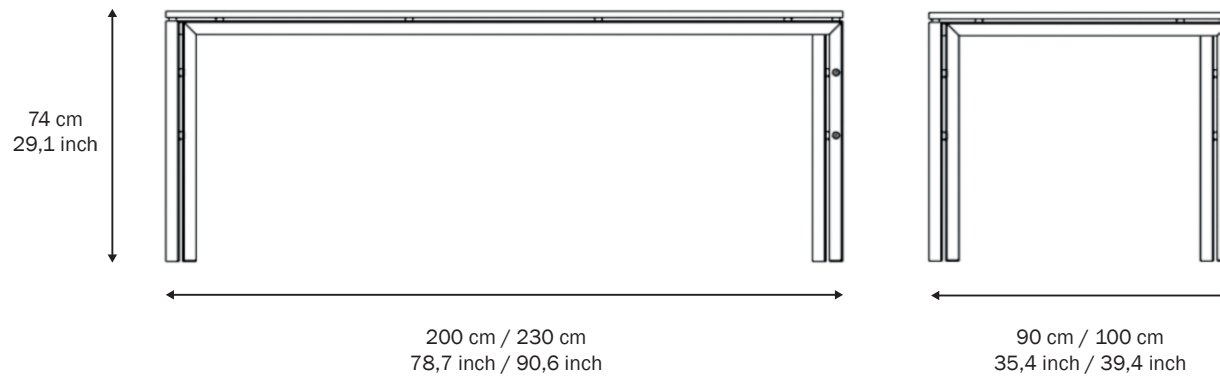


# WT-TABLE Table

KAREL MARTENS



## SPECIFICATIONS

### Table top:

Core: Chipboard 19mm  
Top: Duropal HPL (Pfleiderer)  
Edging: ABS white, black, or plywood

### Table leg:

Leg: Welded steel 3mm L profile  
Slider: Teflon  
Spacers: PVC

### Weight:

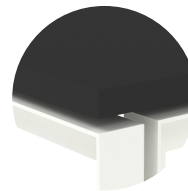
200x90x74 cm: 48 kg - 105,8 lb.  
230x100x74 cm: 57 kg - 125,7 lb.

### 3D-FILES OR HR-IMAGES

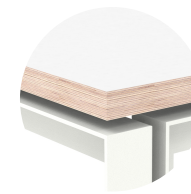
Check: [www.functionals.eu/downloads](http://www.functionals.eu/downloads)



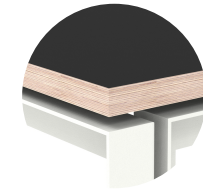
White/White



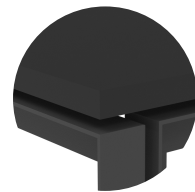
White/Black



White/Plywood/White



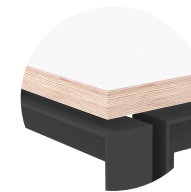
White/Plywood/Black



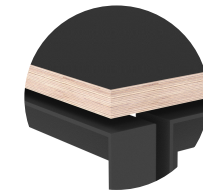
Black/Black



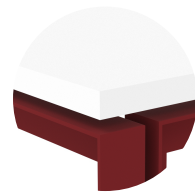
Black/White



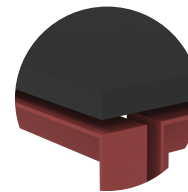
Black/Plywood/White



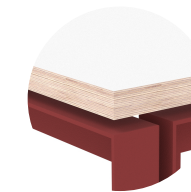
Black/Plywood/Black



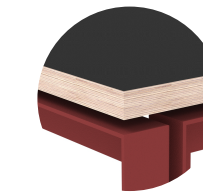
Rust/White



Rust/Black



Rust/Plywood/White



Rust/Plywood/Black

FUNCTIONALS

### Functionals

Edisonstraat 5  
NL-5051 DS Goirle  
tel. +31 (0)13 530 03 89  
info@functionals.eu  
www.functionals.eu

