



SWAN SOFA™

The Swan Sofa™ was made as a special model for the furnishing of suites, lounges and the panoramic restaurant at the SAS Rotal Hotel (today Radisson Blu Royal Hotel) in 1958. The sofa was in production from 1964 -1974 and was reintroduced in 2000. The characteristic 3-dimensional shape contains no straight lines - it is based on curves like the Egg™ and the Swan™.



REPUBLIC OF **Fritz Hansen®**

PRODUCT DESCRIPTION

The shell of the Swan Sofa™ is made of polyurethane foam with glass fibre reinforcement. The shell is upholstered with cold cured foam and covered with fabric or leather.

The shaker base is made of moulded aluminium. The two parts of the base are connected with an aluminium rail, which is screwed onto the bottom of the sofa with 2 M6 screws in each shaker base. The feet are provided with synthetic black-grey leg ferrules.

DESIGN

Arne Jacobsen, 1958.



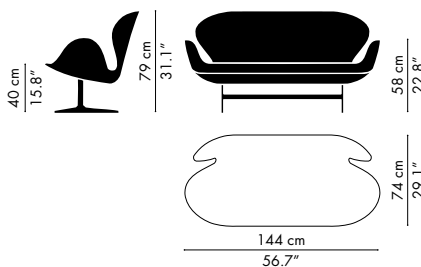
ARNE JACOBSEN 1902-1971

The collaboration between Arne Jacobsen and Fritz Hansen dates back to 1934. It was not until 1952 however that the team got its breakthrough with the Ant™. It was succeeded by Series 7™ in 1955, thereby enabling both Jacobsen and Fritz Hansen to write their names into furniture history.

Arne Jacobsen was incredibly productive, both as an architect and a designer. At the end of the 1950s he designed the SAS Royal Hotel in Copenhagen, also designing the Egg™, the Swan™, the Swan Sofa™ and Series 3300™ for the same project.

VARIATIONS & DIMENSIONS

3321



UPHOLSTERY

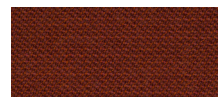
The Swan Sofa™ comes upholstered in both fabric and leather. The upholstery is available in the following selection of fabrics and leathers:

Fritz Hansen Colours:

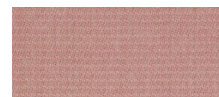
The Fritz Hansen Colours are created exclusively by Republic of Fritz Hansen's own design team and consist of serene pale pink, warm and earthy terracotta orange and finally deep ocean blue.



BLUE
FABRIC: FH 6001



ORANGE
FABRIC: FH 5901



PINK
FABRIC: FH 5801

Fabrics:

Capture, Comfort, Divina, Divina Melange, Divina MD, Diablo, Fame, Fiord, Hallingdal, Steelcut, Steelcut Trio, Sunniva, Tonus.

Leathers:

Basic, Classic, Rustic, Natural, White, Optical white, Elegance and Sense.



WARRANTY

A five-year warranty against manufacturing defects in standard products (materials and workmanship). Wear, tear and damage to the product are not covered under this warranty. Claims from end users under the guarantee must be submitted to the vendor from whom the product was purchased. All measurements are indicative.

STANDARD WARRANTY:

5 years

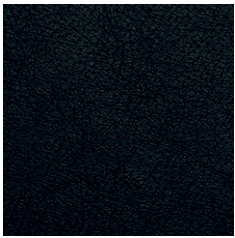
MY REPUBLIC EXTENDED WARRANTY:

5 years: Fabric, Leather: Basic.

10 years: Base, Shell, Leather: Classic, Rustic, Natural, White, Optical white, Elegance, Sense.

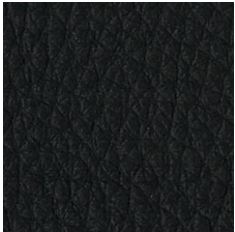
To obtain an extended warranty offered through My Republic the products should be registered online. Go to www.fritzhansen.com/my-republic to register.

BASIC LEATHER



BLACK

CLASSIC LEATHER



BLACK



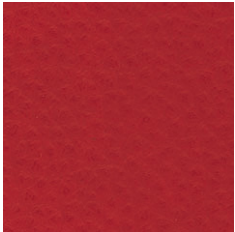
BLACK BROWN



COGNAC

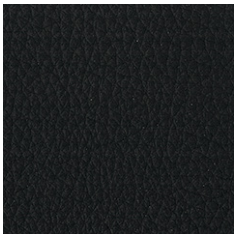


WALNUT



BRIGHT RED

SOFT LEATHER



BLACK



BLACK BROWN



COGNAC



WALNUT



BRIGHT RED

ELEGANCE LEATHER



BLACK



BLACK BROWN



WALNUT



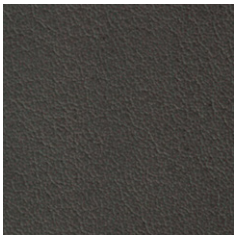
INDIAN RED

RUSTIC LEATHER



RUSTIC

SENSE LEATHER



CONCRETE GREY



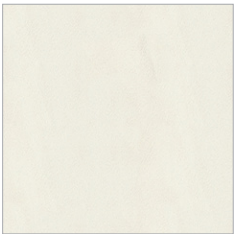
CHOCOLATE

NATURAL LEATHER



NATURAL

WHITE LEATHER



WHITE

OPTICAL WHITE LEATHER



OPTICAL WHITE