



Fredericia

1 9 1 1

KILE SOFA - 3 SEAT - JASPER MORRISON



Kile Sofa - 3 Seat - 2703

, D: 83 cm
H: 70 cm, Sh: 42 cm
Weight: 63 kg, Cbm: 0m³



New in dimensions and distinct in its clean-cut design language, the Kile sofa series is designed to seamlessly blend into the home or public space. The sofa is built on a solid wood frame and features cold cured foam with fabric upholstery.

UPHOLSTERY

Fabric group: 1, 2, 3, 4, 5.

TEST

EN 1022:2005 and EN 16139:2013

GUA R A N T E E

Fredericia Furniture A/S offers a five-year guarantee against manufacturing defects in standard products (materials and construction). Wear and damage to covers, surface treatment, inappropriate use and the like are not covered by the warranty.






COLOUR WORLDS BY FREDERICIA

*To help you navigate the vast swathes of fabrics,
leathers and colours available, Fredericia has
curated a refined materials toolbox to help make
your choices as simple as possible.*

Choosing the right upholstery to complement your interior can be quite a journey. The choice of fabric, leather and colour is crucial in the expression of each furniture piece and the role it plays in the interior – whether the style evokes classic restraint, contemporary boldness or daring creativity.

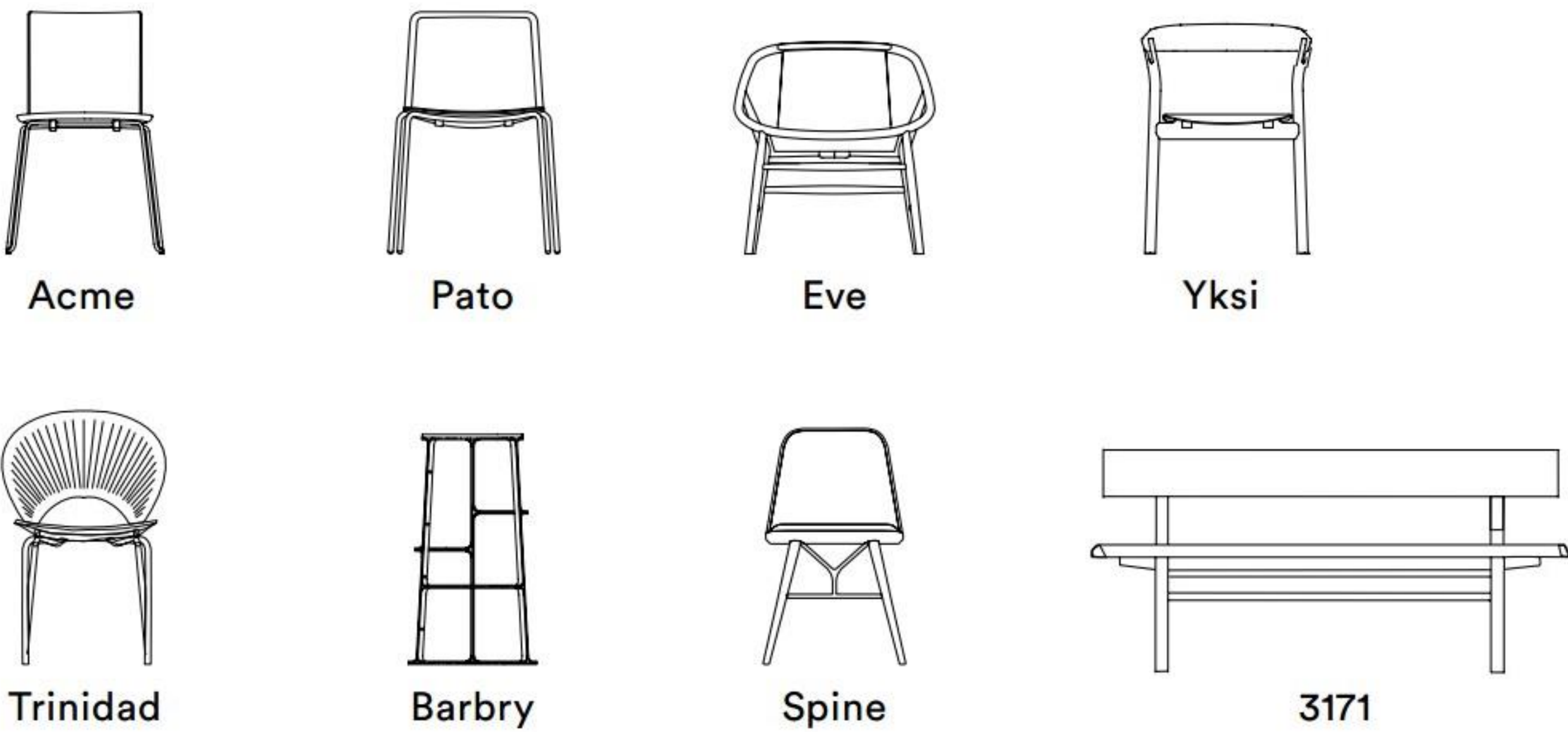
Fredericia's timeless mix of soft, natural shades rooted in Scandinavian nature stands outside of fast-moving trends with a long-lasting style that reflects the spirit of your time and place.

The fabrics produce a variety of tactile experiences that gravitate from heavy to light, from delicate to bold, and from calm to lively - awakening the senses in the ambience you want to create.

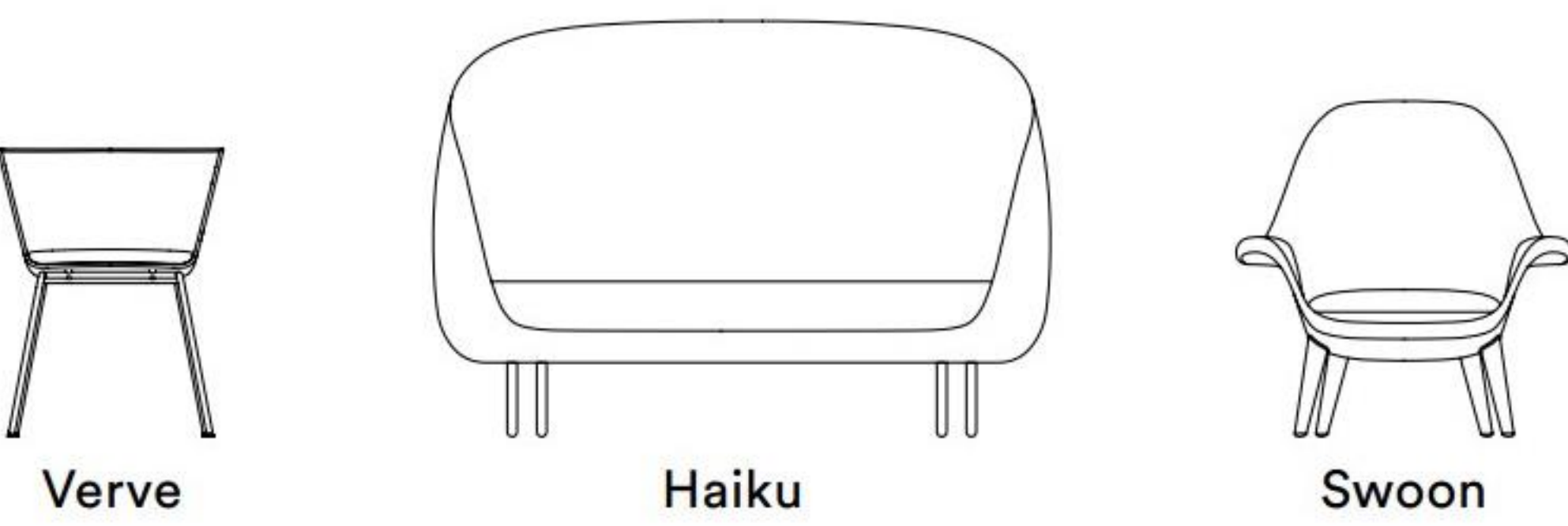
Dive into Fredericia's world of colours and create your own unique piece of furniture. 

Application Groups

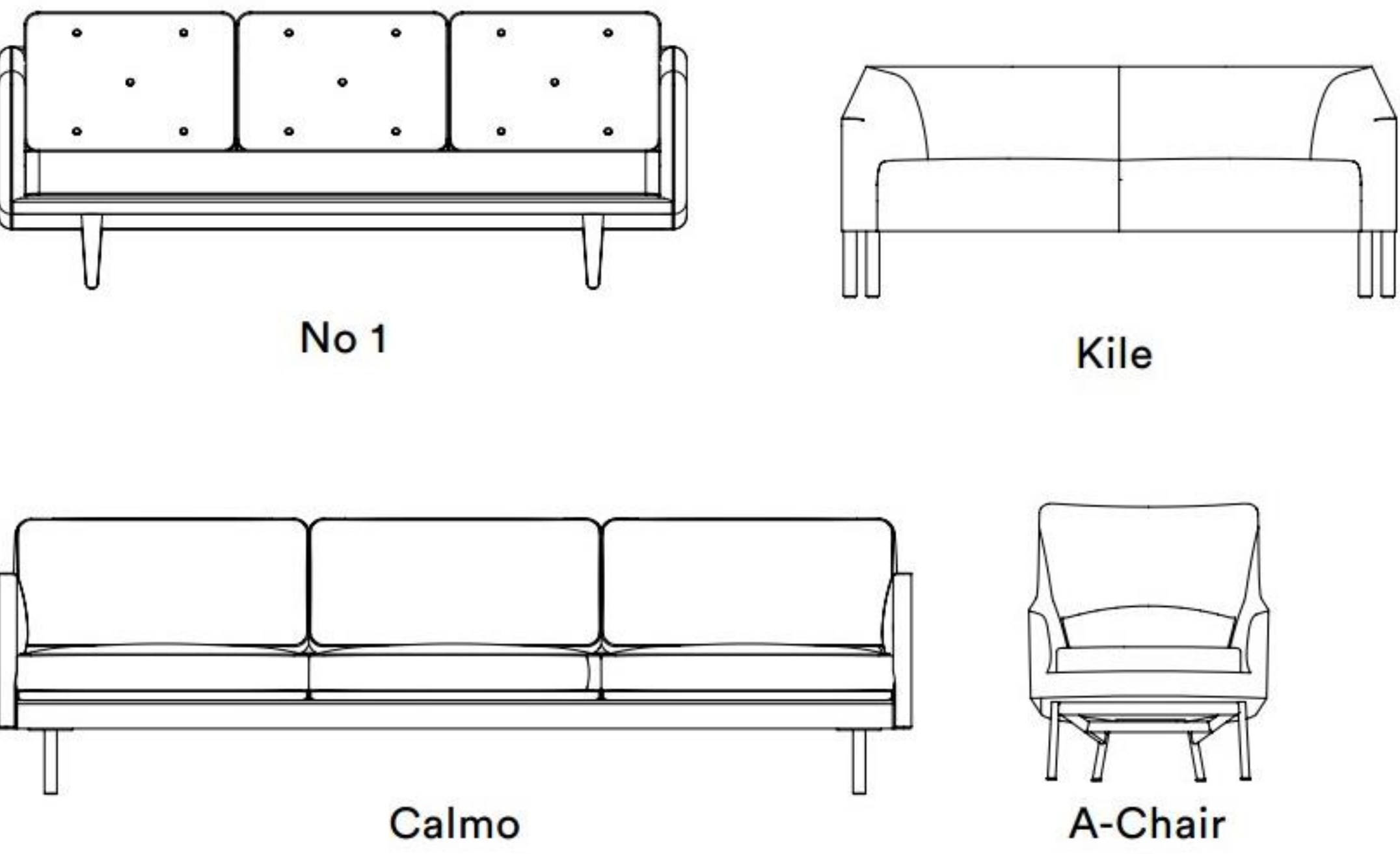
A



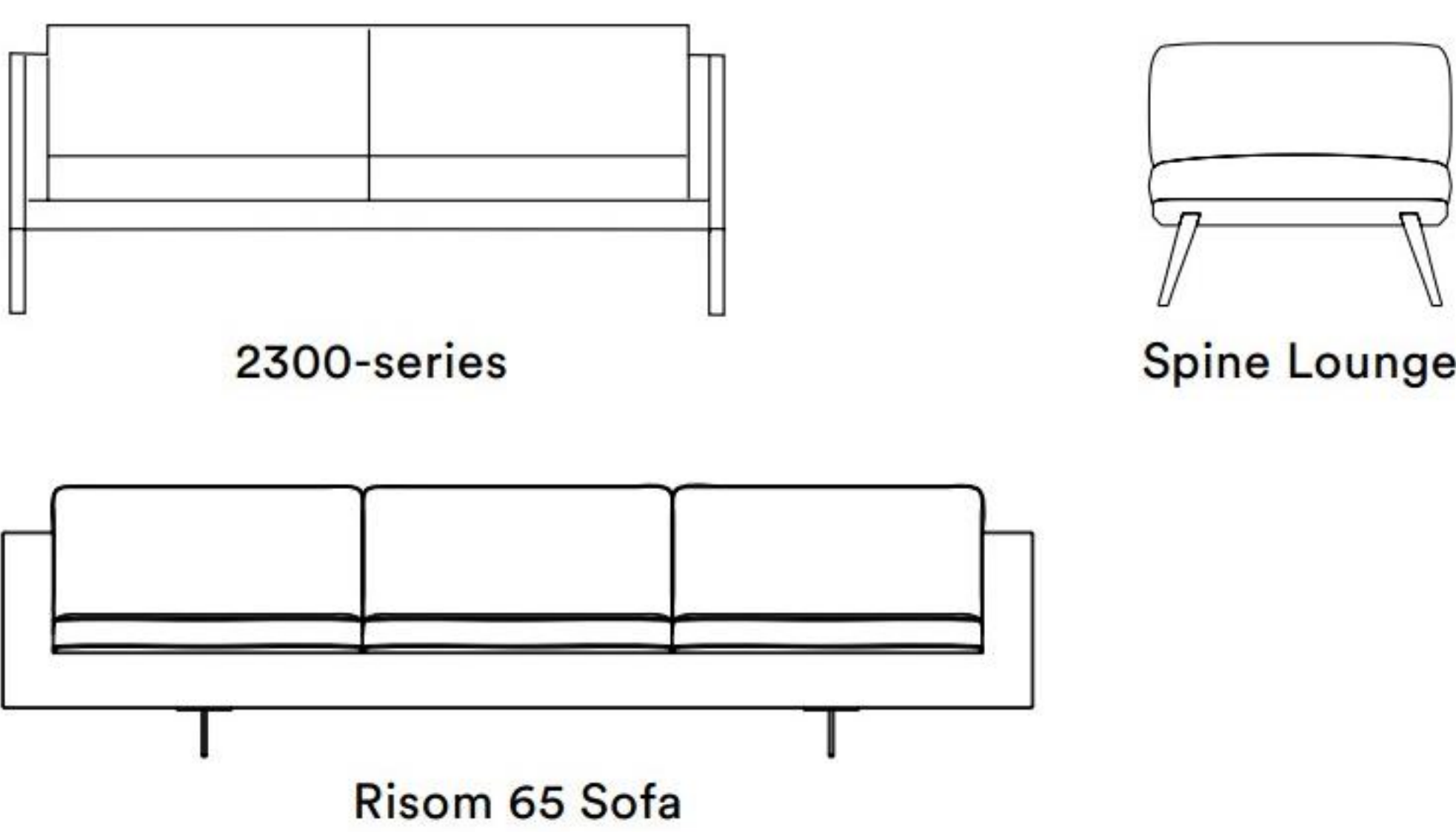
B



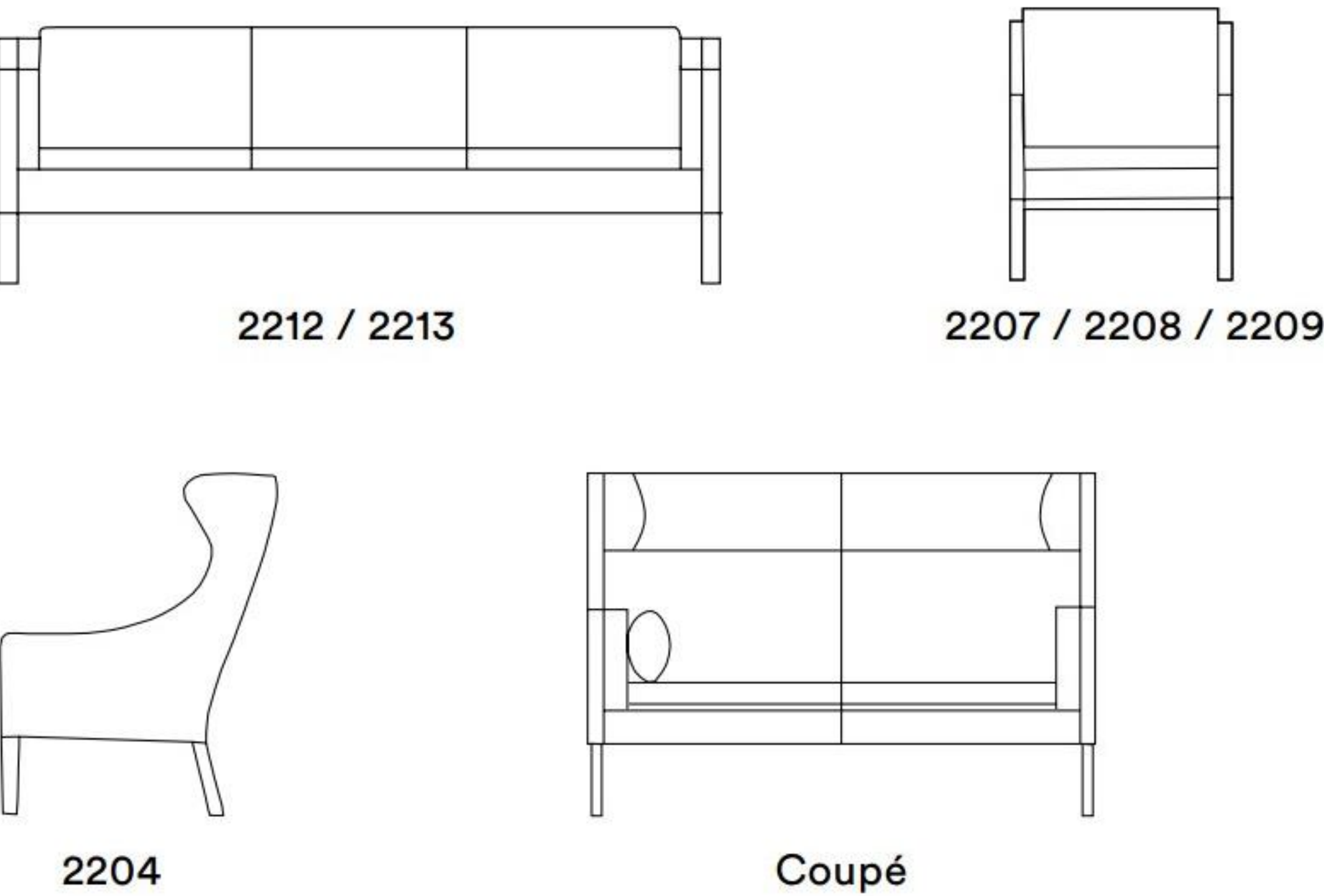
C



D



E



Fabric Application

Fabric Group 1	A	B	C	D	E	Page
Fame	•	•				46
Maple	•	•	•	•		60
Mood	•	•	•	•		54
Remix	•					47
Rime	•	•	•			48
Ruskin	•	•	•	•	•	61
Fabric Group 2	A	B	C	D	E	
Aguila	•	•	•	•		60
Canvas	•			•		46
Carlotto	•	•	•	•		66
Craggan	•	•	•	•		52
Fiord	•	•	•	•		47
Grid	•	•	•	•		74
Hallingdal	•	•	•	•	•	54
Harald	•	•		•	•	71
Merit	•	•	•			75
Re-wool	•	•	•	•		48
Savanna	•	•	•	•		62
Steelcut Trio	•	•	•	•		56
Sunniva	•	•	•	•	•	62
Tonus	•	•	•			56
Fabric Group 3	A	B	C	D	E	
Comfort+	•	•	•	•		74
Divina	•	•	•	•	•	52
Divina Melange	•	•	•	•	•	53
Sinequanon	•	•	•	•	•	63
Twill weave	•	•	•	•	•	57
Vidar	•	•	•	•	•	57
Fabric Group 4	A	B	C	D	E	
Cobblestone	•	•	•	•		66
Grand Mohair	•	•				70
Tosca	•	•	•	•		63
Fabric Group 5	A	B	C	D	E	
Byram	•	•	•	•		70
Fuse	•		•	•	•	53
Noise	•	•	•	•	•	55
Pulsar	•		•	•	•	67
Pilot	•	•	•	•	•	67
Reflex	•		•	•	•	55
Sonar	•	•	•	•	•	61

CANVAS

Fabric Group 2



About	Flat wool textile with subtle striped texture. Large scale of colour blends.
Application	A
Composition	90% wool, 10% polyamide
Martindale	100 .000
Environment	EU Ecolabel
Flame resistance	AS/NZS 1530.3, BS 5852 part 1, EN 1021-1/2, IMO FTP Code 2010 Part 8, NF D 60 013, NFPA 260, SN 198 898 5.3 with treatment, UNI 9175 1IM, US Cal. Bull. 117-2013, ÖNORM B1/ Q1, BS 5852 ignition source 3, BS 5852 Crib 5
Pilling	4
Lightfastness	6
More info	kvadrat.dk
Total no of colours	46



254
Camel



154
Charcoal



424
Cognac



114
Light sand



124
Cool grey

FAME

Fabric Group 1



About	Classic flat woven wool fabric in monochrome colours Suitable for flat upholstery.
Application	A B
Composition	95% wool, 5% polyamide
Martindale	100 .000
Environment	EU Ecolabel
Flame resistance	BS EN 1021-1 Cigarette, BS EN 1021-2 Match, BS 5852 Crib 5, CA TB 117-2013, Class Uno UNI 9175 Class 1 I EMME, AM 18 - NF D 60-013, BS 5852 Part 1 0,1 Cigarette & match, ÖNORM B 3825-B1-3800-Q1 UK, IMO MSC 307(88) Annex 1 part 8, MED Certificate IMO, BS 476 Part 7, class 1
Pilling	4
Lightfastness	5-7
More info	gabriel.dk
Total no of colours	60



61134
Dark brown



60999
Black



61047
Deep red



64167
Deep red



66061
Navy blue



68148
Olive



61131
Cognac

FIORD

Fabric Group 2



About	A soft, nubby surface and subtle colour blends wool fabric. Suitable for all upholstery.
Application	A B C D
Composition	92% wool, 8% polyamide
Martindale	60.000
Environment	EU Ecolabel
Flame resistance	BS 5852 Crib 5 with treatment, BS 5852 part 1, DIN 4102 B2, EN 1021-1/2, IMO FTP Code 2010 Part 8, NF D 60 013 UNI 9175 1IM, US Cal. Bull. 117-2013, AS/NZS 3837, class 2 SN 198 898 5.3 with treatment
Pilling	4-5
Lightfastness	6
More info	kvadrat.dk
Total no of colours	27



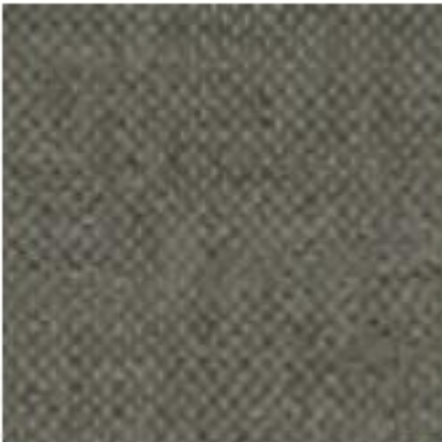
271
Clay



581
Deep red



391
Dark brown



961
Olive



151
Cold grey



751
Dusty blue



191
Charcoal



991
Ancient green

REMIX

Fabric Group 1



About	Flat wool textile with a large scale of colour blends.
Application	A
Composition	90% wool, 10% polyamide
Martindale	100.000
Environment	EU Ecolabel
Flame resistance	AS/NZS 1530.3, AS/NZS 3837, class 2, BS 5852 part 1, EN 1021-1/2, IMO FTP Code 2010 Part 8, NF D 60 013, NFPA 260, UNI 9175 1IM, US Cal. Bull. 117-2013, ÖNORM B1/ Q1, BS 5852 Crib 5
Pilling	5
Lightfastness	5
More info	kvadrat.dk
Total no of colours	49



252
Camel



163
Charcoal



183
Navy blue



133
Clay



373
Deep red



973
Ancient green



393
Dark brown



433
Cognac



143
Cold grey



733
Dusty blue

RIME

Fabric Group 1



About	Classic wool two-tone textile with a beautiful melange effect.
Application	A B C D
Composition	90% wool, 10% polyamide
Martindale	100 . 000
Environment	EU Ecolabel
Flame resistance	AS/NZS 3837, class 2, BS 5852 part 1, DIN 4102 B2, EN 1021-1/2, IMO FTP Code 2010 Part 8, NF D 60 013, SN 198 898 5.3 with treatment, UNI 9175 1IM, US Cal. Bull. 117-2013, ÖNORM B2/Q1, BS 5852 Crib 5 with treatment, BS 5852 ignition source 3
Pilling	4
Lightfastness	5-6
More info	kvadrat.dk
Total no of colours	27



RE-WOOL

Fabric Group 2

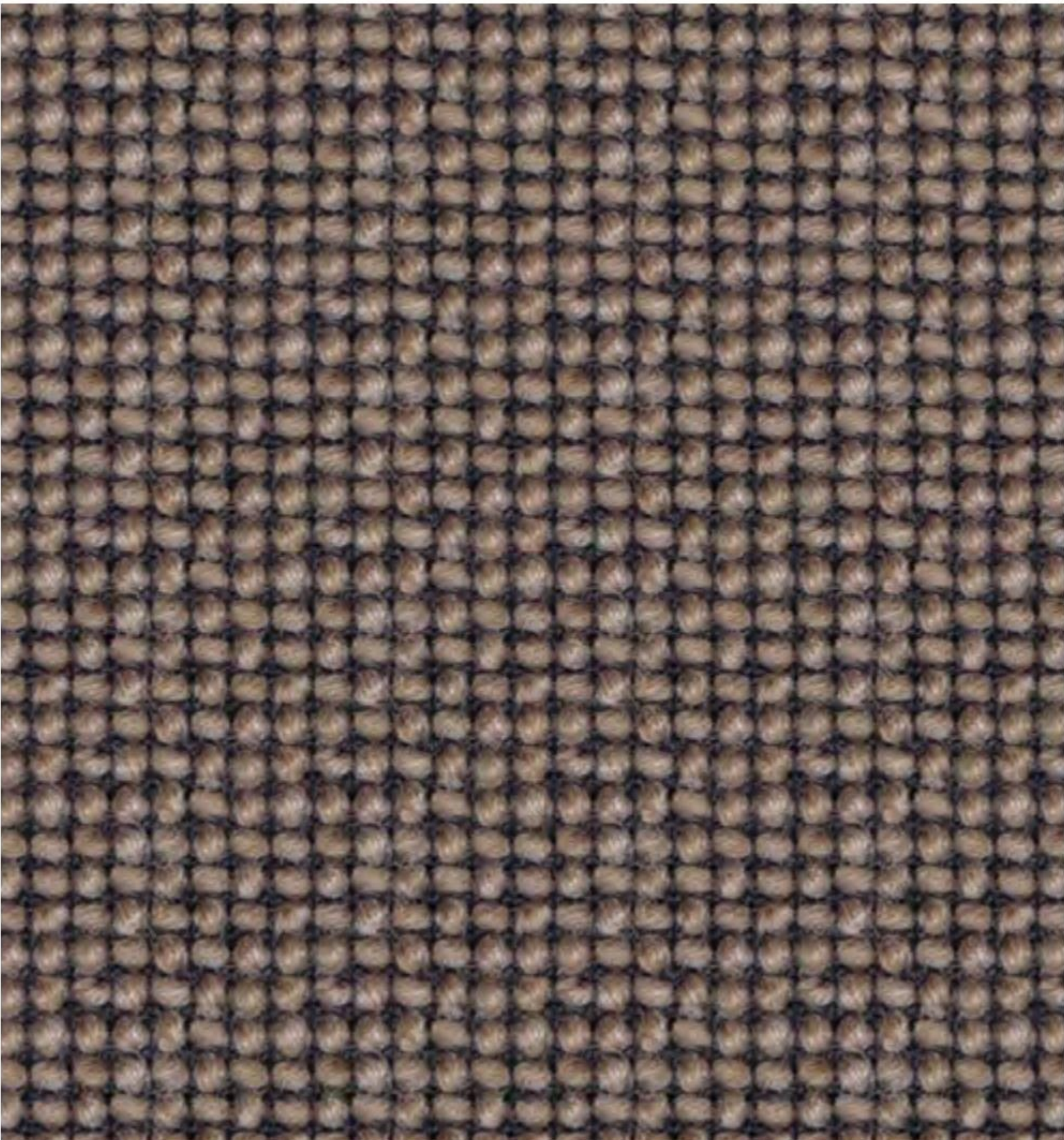


About	Upholstery textile with a subtle yet visible woven structure and soft colourways enriched by sparks. Produced using 45% recycled wool from Kvadrat's English mills.
Application	A B C D
Composition	45% wool, 45% recycled wool, 10% polyamide
Martindale	50 . 000
Environment	EU Ecolabel
Flame resistance	AS/NZS 1530.3, BS 5852 Crib 5 with treatment, BS 5852 ignition source 3, BS 5852 part 1, EN 1021-1/2, IMO FTP Code 2010 Part 8, NF D 60 013, UNI 9175 1IM, US Cal. Bull. 117-2013, ÖNORM B1/ Q1
Pilling	4
Lightfastness	7
More info	kvadrat.dk
Total no of colours	21



CRAGGAN

Fabric Group 2



About	Voluminous wool textile with a remarkable yet harmonious texture. Two-tone weaved with subtle kontrasts.
Application	A B C D
Composition	100% wool
Martindale	50 .000
Environment	Sustainable resource
Flame resistance	EN 1021 - 1 Cigarette, EN 1021 - 2 Match, BS 5852 Ignition Source 5
Pilling	4
Lightfastness	5
More info	camirafabrics.com
Total no of colours	10



02
Camel



09
Charcoal



10
Cold grey

DIVINA 3

Fabric Group 3



About	Classic wool felt used for furniture as well as clothing. Divina 3 (monochrome) are suitable for all upholstery. Domestic to moderate public use.
Application	A B C D E
Composition	100% wool
Martindale	45 .000
Environment	EU Ecolabel
Flame resistance	AS/NZS 1530.3, BS 5852 Crib 5, BS 5852 part 1, BS 5867 part 2 type B, EN 1021-1/2, EN 13501, C-s1, d0, glued, IMO FTP Code 2010 Part 8, NF D 60 013, NFPA 260, SN 198 898 5.3 with treatment, UNI 9175 1IM, US Cal. Bull. 117-2013, ÖNORM B1/ Q1, BS 5852 ignition source 3
Pilling	3
Lightfastness	7
More info	kvadrat.dk
Total no of colours	56



236
Camel



191
Jet black



346
Cognac



246
Cognac



944
Olive



793
Navy blue



886
Ancient green

DIVINA MELANGE 3

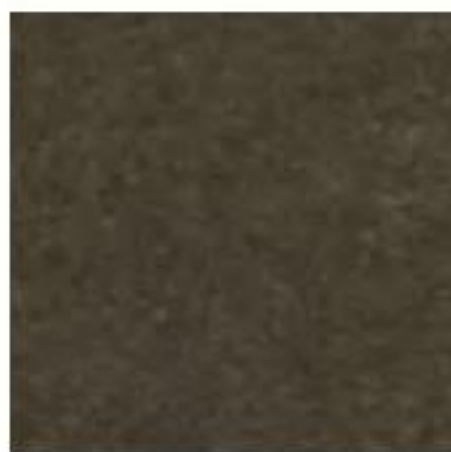
Fabric Group 3



About	Classic wool felt used for furniture as well as clothing. Divina Melange 2 (melange yarns) are suitable for all upholstery. Domestic to moderate public use.
Application	A B C D E
Composition	100% wool
Martindale	45.000
Environment	EU Ecolabel
Flame resistance	AS/NZS 1530.3, BS 5852 Crib 5, BS 5852 part 1, BS 5867 part 2 type B, EN 1021-1/2, EN 13501, C-s1, d0, glued, IMO FTP Code 2010 Part 8, NF D 60 013, NFPA 260, SN 198 898 5.3 with treatment, UNI 9175 1IM, US Cal. Bull. 117-2013, ÖNORM B1/ Q1, BS 5852 ignition source 3
Pilling	3
Lightfastness	6-7
More info	kvadrat.dk
Total no of colours	24



220
Light sand



280
Dark brown



120
Cold grey



180
Charcoal



771
Dusty blue

FUSE

Fabric Group 5



About	Densely woven wool and cotton blend with a close pattern of ribbed stripes in which the weave creates rows of stitch-like patterning.
Application	A C D E
Composition	65% wool, 23% wool, 8% viscose, 4% polyamide
Martindale	100.000
Environment	Sustainable resource
Flame resistance	BS 5852 Crib 5, BS 5852 part 1, DIN 4102 B2, EN 1021-1/2, IMO FTP Code 2010 Part 8, NF D 60 013, UNI 9175 1IM, US Cal. Bull. 117-2013, ÖNORM B1/ Q1
Pilling	3-4
Lightfastness	7
More info	kvadratraftsimons.com
Total no of colours	10



351
Clay



981
Ancient green



131
Cold grey



191
Navy blue

HALLINGDAL 65

Fabric Group 2



About	Classic wool-viscose blend with voluminous grip and a large scale of colour blends. Suitable for all upholstery. Designed by Nanna Ditzel in 1965.
Application	A B C D
Composition	70% wool, 30% viscose
Martindale	100 . 000
Environment	EU Ecolabel
Flame resistance	AS/NZS 1530.3, AS/NZS 3837, BS 5852 Crib 5, BS 5852 part 1, EN 1021-1/2, IMO FTP Code 2010 Part 8, NF D 60 013, NFPA 260, SN 198 898 5.3 with treatment, UNI 9175 1IM, US Cal. Bull. 117-2013, ÖNORM B1/ Q1, BS 5852 ignition source 3
Pilling	3
Lightfastness	7
More info	kvadrat.dk
Total no of colours	56



110
Light sand



368
Dark brown



224
Camel



130
Cold grey



227
Clay



180
Charcoal



376
Dark brown

MOOD

Fabric Group 1



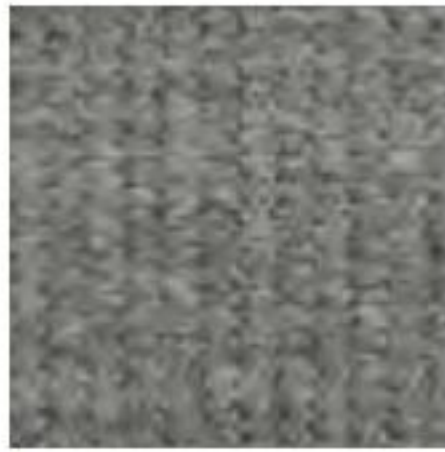
About	Wool fabric with a fluted surface structure. Natural and burnt colour shades.
Application	A B C D
Composition	92% wool, 8% polyamide
Martindale	90 . 000
Environment	EU Ecolabel
Flame resistance	BS EN 1021-2 Match, BS EN 1021-1 Cigarette, BS 5852 Part 1 0,1 Cigarette & match, BS 476 Part 7, class 1, Class Uno UNI 9175 Class 1 I EMME, CA TB 117-2013
Pilling	4
Lightfastness	5-7
More info	gabriel.dk
Total no of colours	31



4104
Camel



5105
Ancient green



1102
Cold grey



4106
Ocean



2104
Charcoal



1103
Powder nude



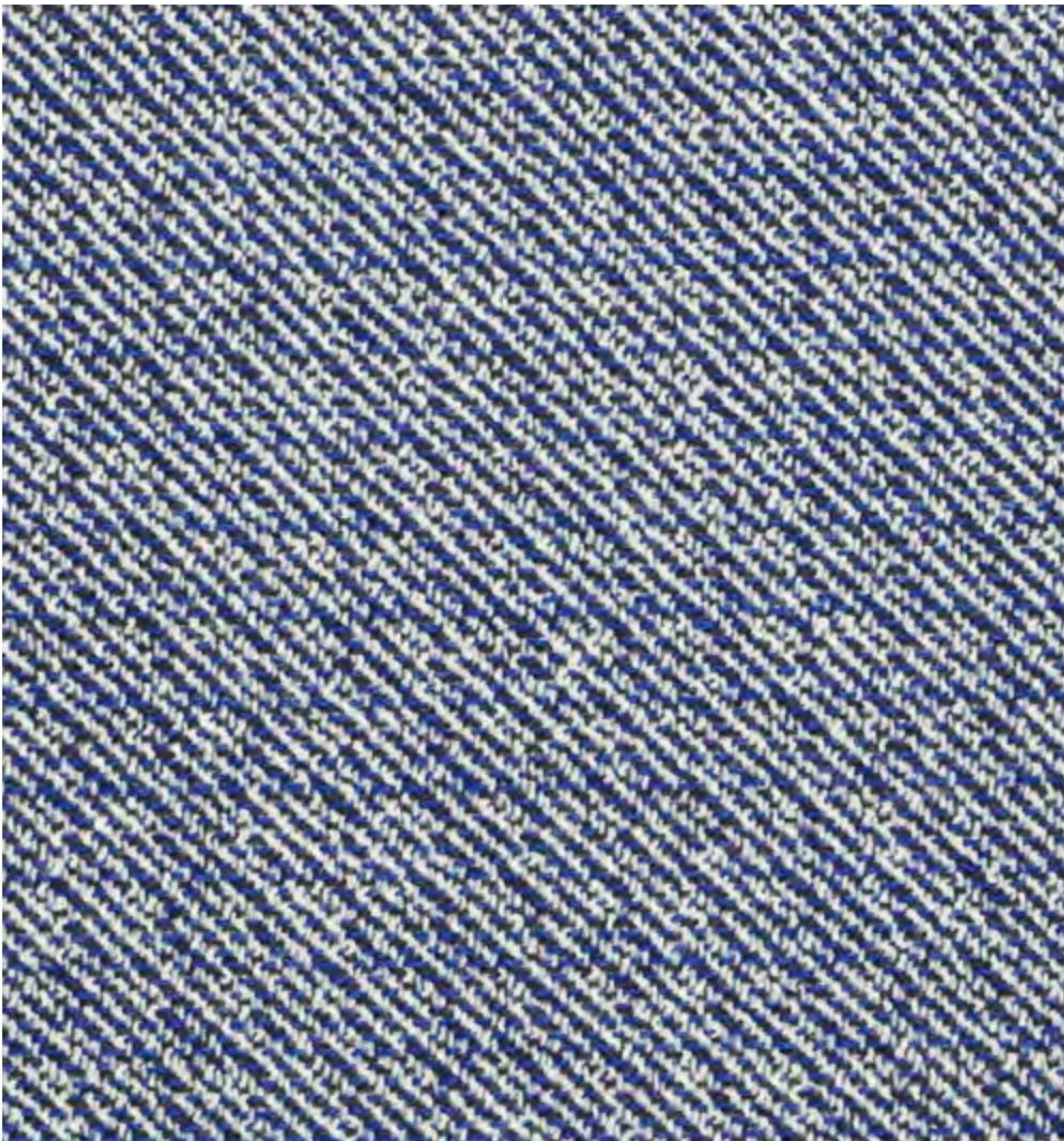
2107
Dusty blue



1105
Powder nude

NOISE

Fabric Group 5



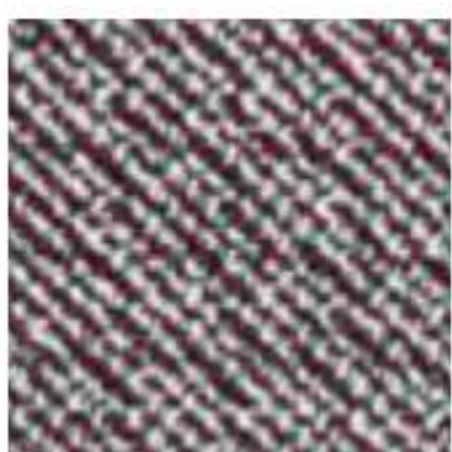
About	Wool blend in which strong diagonal stripes are broken up by flecks of sharp or neutral colours.
Application	A B C D
Composition	96% wool, 4% polyamide
Martindale	30.000
Environment	EU Ecolabel
Flame resistance	BS 5852 part 1, DIN 4102 B2, EN 1021-1/2, IMO FTP Code, 2010 Part 8, NF D 60 013, UNI 9175 1IM, US Cal. Bull. 117-2013, BS 5852 Crib 5 with treatment
Pilling	4
Lightfastness	6-7
More info	kvadratrafsimons.com
Total no of colours	10



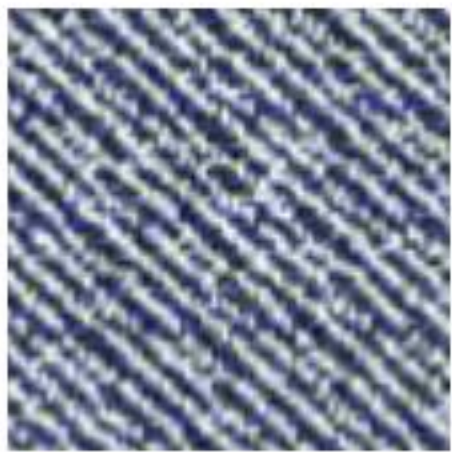
132
Clay



222
Camel



852
Deep red



742
Navy blue

REFLEX

Fabric Group 5



About	Wool textile with 10cm-wide strips of embroidery executed in a slightly irregular yarn.
Application	A C D E
Composition	87% wool, 8% viscose, 5% polyamide
Martindale	100.000
Environment	Sustainable resource
Flame resistance	BS 5852 part 1, DIN 4102 B2, EN 1021-1/2, IMO FTP Code, 2010 Part 8, NF D 60 013, UNI 9175 1IM, US Cal. Bull., 117-2013, ÖNORM B2/Q1
Pilling	3-4
Lightfastness	7
More info	kvadratrafsimons.com
Total no of colours	10



339
Powder nude



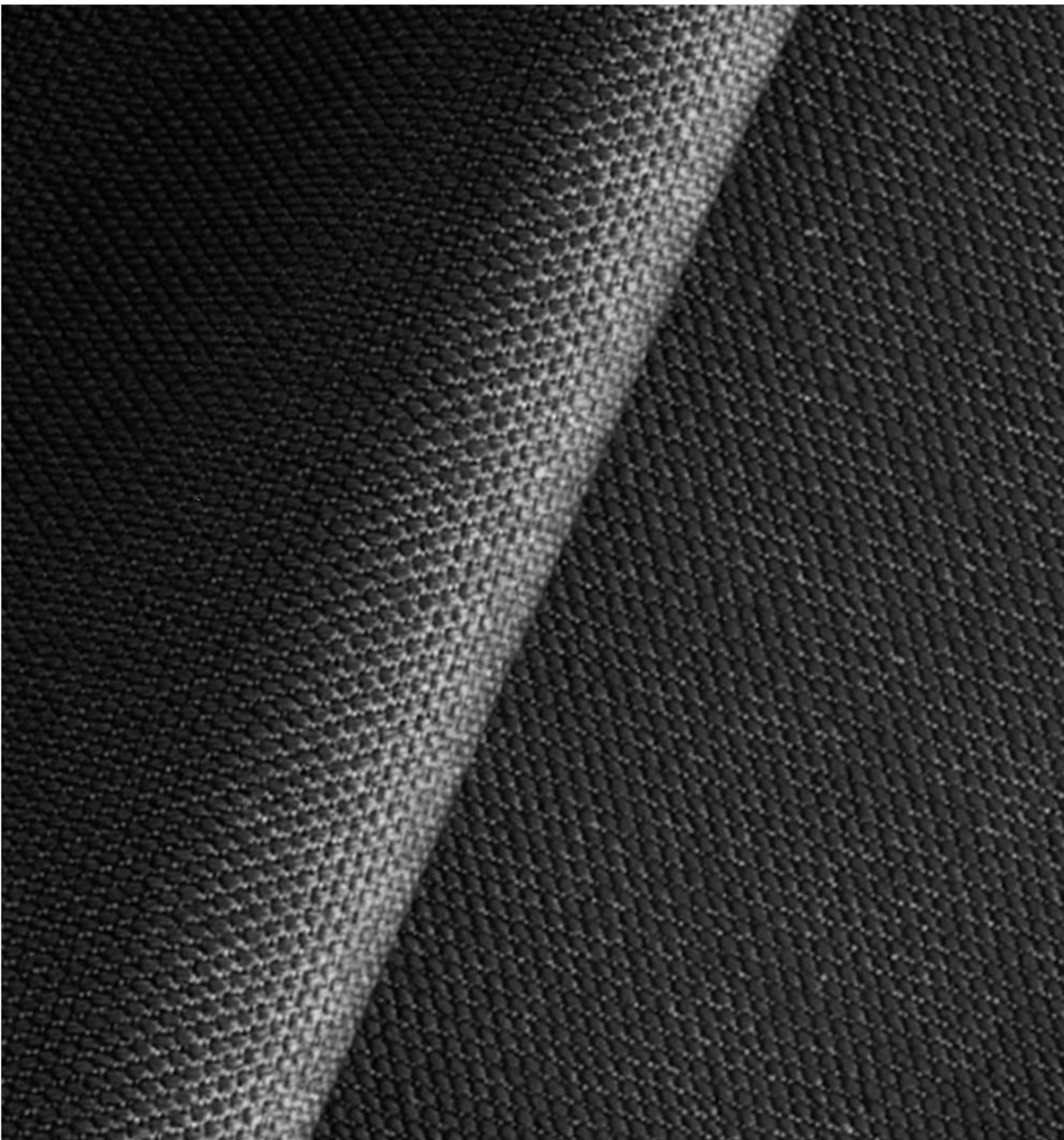
159
Jet black



199
Jet black

STEELCUT TRIO 3

Fabric Group 2



About	Tightly woven wool textile in three-colour mix.
Application	A B C D
Composition	90% wool, 10% polyamide
Martindale	100 .000
Environment	EU Ecolabel
Flame resistance	AS/NZS 3837, class 2, BS 5852 part 1, EN 1021-1/2, IMO FTP Code 2010 Part 8, NF D 60 013, NFPA 260, SN 198 898 5.3 with treatment, UNI 9175 1IM, US Cal. Bull. 117-2013 ÖNORM B1/ Q1, BS 5852 Crib 5 with treatment, AS/NZS 1530.3, BS 5852 ignition source 3
Pilling	4
Lightfastness	5
More info	kvadrat.dk
Total no of colours	54



TONUS 4

Fabric Group 2



About	Classic plain-weave wool fabric with a comfortable soft touch and luxurious density.
Application	A B C
Composition	90% wool, 10% helanca
Martindale	100 .000
Environment	EU Ecolabel
Flame resistance	AS/NZS 1530.3, BS 5852 part 1, EN 1021-1/2, IMO FTP Code 2010 Part 8, NF D 60 013, NFPA 260, SN 198 898 5.3 with treatment, UNI 9175 1IM, US Cal. Bull. 117-2013, ÖNORM B1/ Q1, BS 5852 Crib
Pilling	3
Lightfastness	6-7
More info	kvadrat.dk
Total no of colours	47



TWILL WEAVE

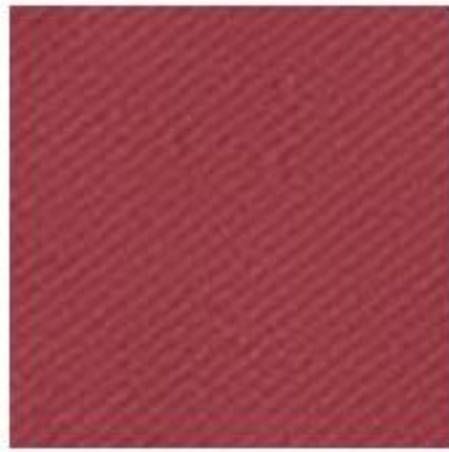
Fabric Group 3



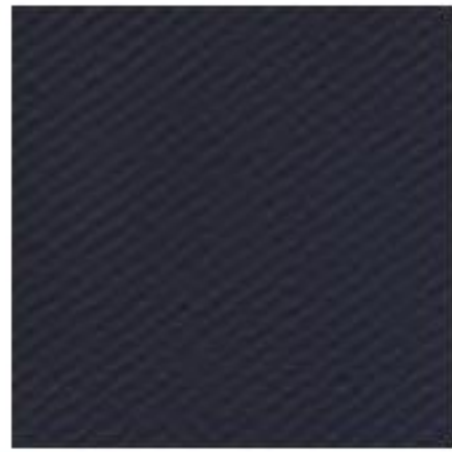
About	Classic twill textile woven in two related colours creating beautiful colourways. Large wool content creates a “heavy” textile with an elegant fit.
Application	A B C D E
Composition	90% wool, 10% polyamid
Martindale	60.000
Environment	EU Ecolabel
Flame resistance	AS/NZS 1530.3, BS 5852 ignition source 3, BS 5852 part 1, EN 1021-1/2, IMO FTP Code 2010 Part 8, US Cal. Bull., 117-2013, NF D 60 013, UNI 9175 1IM, BS 5852 Crib 5, SN 198 898 5.3 with treatment, AS/NZS 3837, class 3
Pilling	3-4
Lightfastness	6-7
More info	kvadrat.dk
Total no of colours	19



190
Charcoal



570
Deep red



790
Navy blue



990
Ancient green



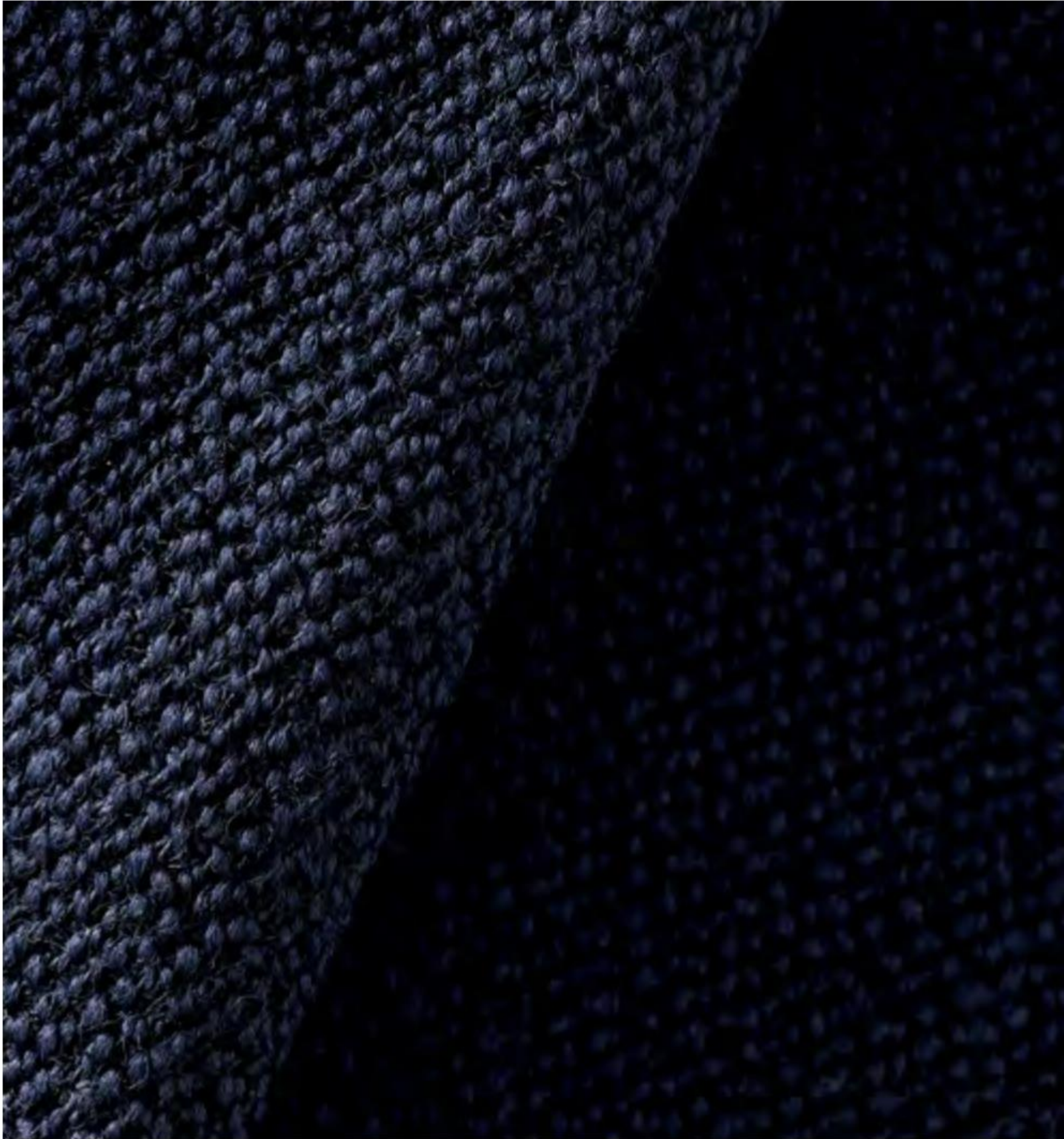
940
Ocean



530
Powder nude

VIDAR 3

Fabric Group 3



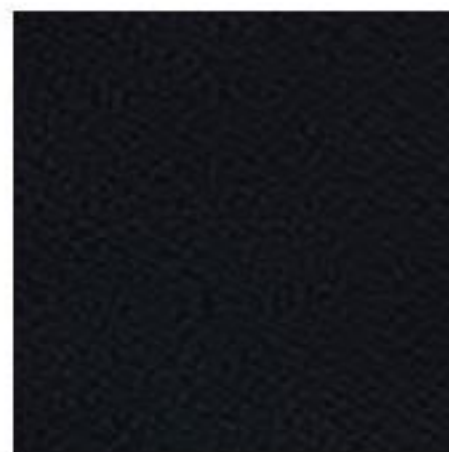
About	Elegant tightly woven wool textile with a matt, harmonious surface and a beautiful crepe texture.
Application	A B C D E
Composition	94% wool, 6% polyamide
Martindale	100.000
Environment	EU Ecolabel
Flame resistance	DIN 4102 B2, EN 1021-1/2, IMO FTP Code 2010 Part 8, NF D 60 013, UNI 9175 1IM, US Cal. Bull. 117-2013, BS 5852 part 1, NFPA 260, BS 5852 Crib 5
Pilling	4
Lightfastness	5-6
More info	kvadrat.dk
Total no of colours	31



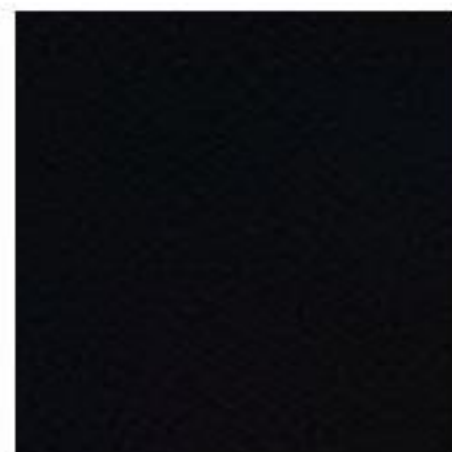
333
Camel



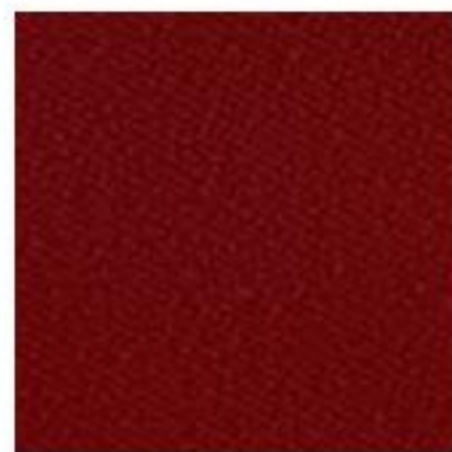
353
Camel



182
Charcoal



1880
Jet black



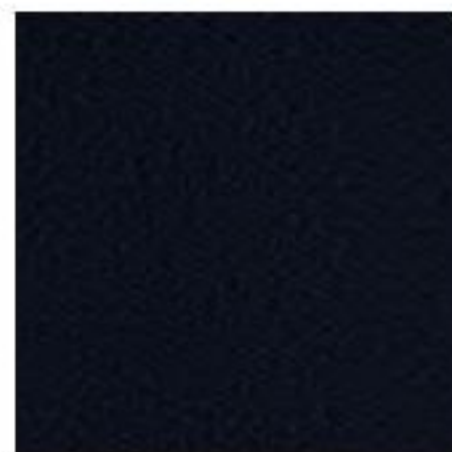
582
Deep red



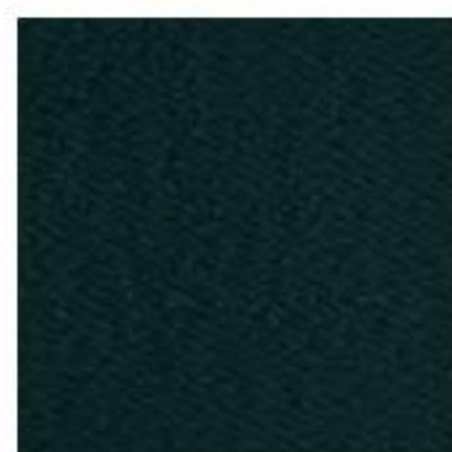
472
Cognac



972
Olive



554
Navy blue



1062
Ancient green



733
Dusty blue

AGUILA

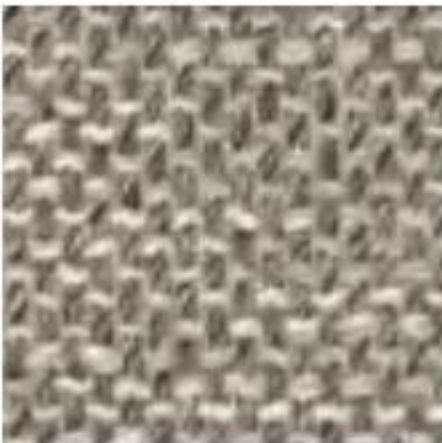
Fabric Group 2



About	Viscose- and cotton union with an outspoken woven structure that creates an Italian flair. Made in Italy and supplied directly to Fredericia.
Application	A B C D
Composition	60% viskose, 20% bomuld, 17% polyester, 3% linen
Martindale	90.000
Environment	Oeko-Tex
Flame resistance	BS 5852 : 2006 - Source 0, BS 5852 : 2006 - Source 1
Pilling	4
Lightfastness	5
More info	fredericia.com
Total no of colours	2



201
Light sand



210
Light sand

MAPLE

Fabric Group 1



About	Viscose/linen chenille with a soft touch. Discrete two-tone colour shades.
Application	A B C D
Composition	81% viscose, 15% linen, 4% polyester
Martindale	30.000
Environment	Sustainable resource
Flame resistance	BS 5852 part 1, EN 1021-1/2, IMO FTP Code 2010 Part 8, BS 5852 Crib 5 with treatment, AS/NZS 1530.3, AS/NZS 3837, class 2, NFPA 260, US Cal. Bull. 117-2013
Pilling	4-5
Lightfastness	5
More info	kvadrat.dk
Total no of colours	26



222
Light sand



722
Cold grey

RUSKIN

Fabric Group 1



About	Soft and elegant textile combining viscose and linen creating motion and depth in the colourways. Discrete yet visible surface structure.
Application	A B C D E
Composition	70% viscose, 15% linen, 10% wool, 5% polyamide
Martindale	60.000
Environment	EU Ecolabel
Flame resistance	Bs 5852 Part 1 Ign 0, Bs 5852 Part 1 Ign 1 With Treatment, Bs 5852 Part 1 Exempt, Bs 5852 Part 2 Ign 5 Crib Contract Upholstery With Treatment
Lightfastness	5
More info	romo.com
Total no of colours	40



10
Light sand



15
Light sand



16
Cold grey



33
Clay



34
Charcoal

SONAR 3

Fabric Group 5



About	Sonar 3 is made of bouclé yarns. The dominant colours of the colourways are tempered by complementary and contrasting colors that create a vital and elegant overall effect. Not suitable for hard public use.
Application	A B C D E
Composition	59% wool, 25% viscose, 9% linen, 5% polyamide, 2% polyester
Martindale	20.000
Environment	Sustainable resource
Flame resistance	BS 5852 part 1, EN 1021-1/2, IMO FTP Code 2010 Part 8, UNI 9175 1IM, US Cal. Bull. 117-2013, BS 5852 Crib 5 with treatment, AS/NZS 3837, class 2
Pilling	3-4
Lightfastness	7
More info	kvadratraftsimons.com
Total no of colours	17



792
Navy blue



113
Powder nude

SAVANNA

Fabric Group 2



About	Mixed content webbed fabric with a "heavy grain" and natural colour shades.
Application	A B C D
Composition	34% polyester, 31% wool, 26% acrylic, 3% polyamide, 2% linen
Martindale	45 . 000
Flame resistance	BS 5852 part 1 with treatment, BS 5852 part 1, ig. s. 0, EN 1021-1/2, NF D 60 013 with treatment, SN 198 898 5.3 with treatment, US Cal. Bull. 117-2013, BS 5852 Crib 5
Pilling	3
Lightfastness	6-7
More info	kvadrat.dk
Total no of colours	12



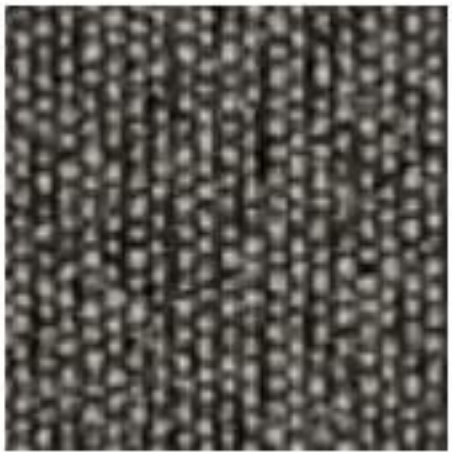
122
Light sand



242
Clay



192
Charcoal



152
Jet black



622
Deep red

SUNNIVA 2

Fabric Group 2



About	Wool/viscose/linen mix with a classic look and natural shine. Natural and subtle colourways.
Application	A B C D E
Composition	58% wool, 25% viscose, 8% linen, 5% polyamide, 4% polyester
Martindale	50 . 000
Environment	Sustainable resource
Flame resistance	BS 5852 part 1, ig. s. 0, EN 1021-1/2, US Cal. Bull. 117-2013 NFPA 260, IMO FTP Code 2010 Part 8, AS/NZS 3837, class 2, BS 5852 Crib 5 with treatment
Pilling	3
Lightfastness	5-6
More info	kvadrat.dk
Total no of colours	24



717
Light sand



242
Cold grey



1079
Charcoal



172
Dusty blue



752
Dusty blue



192
Navy blue



132
Ocean

SINEQUANON

Fabric Group 3



About	Linen-viskose union with yarns in two-tone, creating a sophisticated colour range with a subtle shine. Comes with waterrepellent treatment which offers specific protection from liquids and oils. Not suitable for hard public use.
Application	A B C D E
Composition	60% viscose, 16% linen, 13% cotton, 6% polyacrylic, 5% polyester
Martindale	35.000
Flame resistance	BS 5852 PART 1 IGN 0 CIGARETTE, BS 5852 PART 1 IGN 1 MATCH
More info	dedar.com
Total no of colours	36



01
Light sand



24
Olive



16
Powder nude



37
Camel



13
Navy blue



25
Clay



23
Ancient green



02
Black brown



21
Ocean

TOSCA

Fabric Group 4



About	A rustic textile with structure woven from coarse yarns that combine linen and wool. Dyed with plant colors in natural tones.
Application	A B C D
Composition	63% linen, 29% wool, 5% polyamide, 3% cotton
Martindale	100.000
Flame resistance	BS 5852 PART 1 IGN 0 CIGARETTE, BS 5852 PART 1 IGN 1 MATCH, BS 5852 PART 2 IGN 5 CRIB CONTRACT UPHOLSTERY with treatment
Lightfastness	5
More info	romo.com
Total no of colours	24



04
Light sand



07
Clay



21
Camel

CARLOTTO

Fabric Group 2



About	Voluminous wool bouclé with a very soft surface and structure. High wear resistance and suitable for both private and public use. Made in Italy and supplied directly to Fredericia.
Application	A B C D
Composition	38% wool, 37% polyacrylic, 18% polyester, 7% cotton
Martindale	100 .000
Environment	Oeko-Tex
Flame resistance	BS 5852 : 2006 - Source 0, BS 5852 : 2006 - Source 1
Pilling	4
Lightfastness	4-5
More info	fredericia.com
Total no of colours	6



200
Light sand



404
Clay



400
Dark brown



110
Jet black



900
Olive



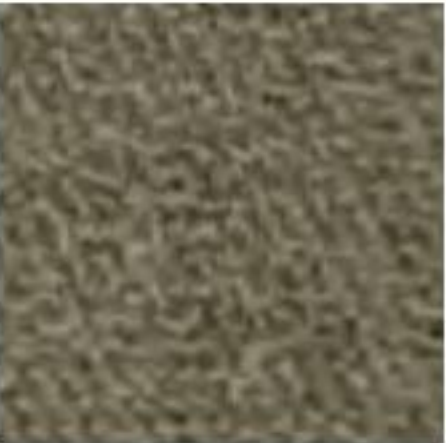
800
Navy blue

COBBLESTONE

Fabric Group 4



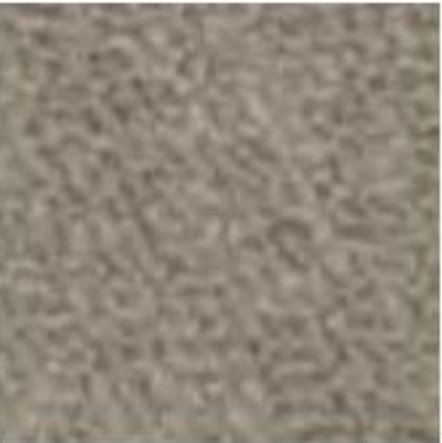
About	A densely woven, chunky upholstery wool boucle with a relaxed appearance. Suitable for all upholstery except for dominant pipings. Not suitable for public use.
Application	A B C D
Composition	75 % wool, 15% cotton, 10% polyamide
Martindale	40 .000
Environment	Sustainable resource
Flame resistance	BS 5852 Part 1 Ign 0 Cigarette, BS 5852 Part 1 Ign 1 Match, BS 5852 Part 2 Ign 5 Crib Contract Upholstery
Lightfastness	5
More info	romo.com
Total no of colours	13



10
Olive



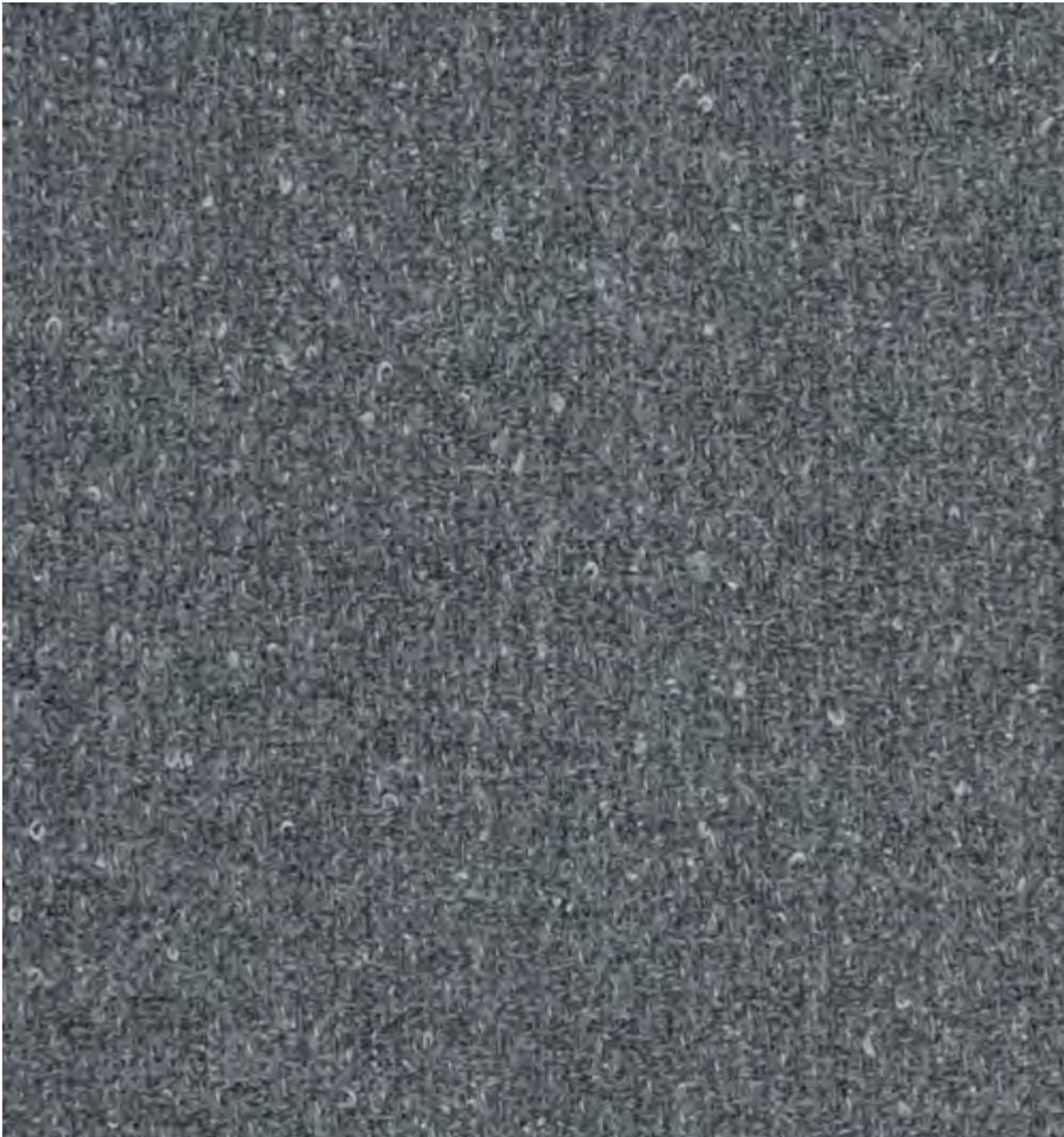
11
Clay



2
Cold grey

PILOT

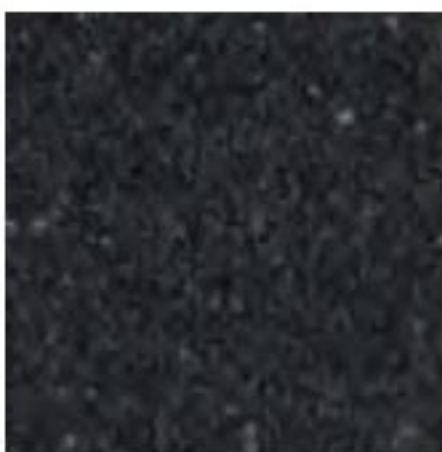
Fabric Group 5



About	This bouclé fabric marries the softness and intense colour of merino wool to the lustre of contrasting yarns. Suitable for all upholstery.
Application	A B C D E
Composition	82% wool, 10% polyester, 8% polyamide1
Martindale	70.000
Environment	Sustainable resource
Flame resistance	BS 5852 part 1, DIN 4102 B2, EN 1021-1/2, IMO FTP Code 2010 Part 8, UNI 9175 1IM, US Cal. Bull. 117-2013, ÖNORM B1/ Q1, AS/NZS 3837, class 2, BS 5852 Crib 5
Pilling	4
Lightfastness	7
More info	kvadrat.dk
Total no of colours	10



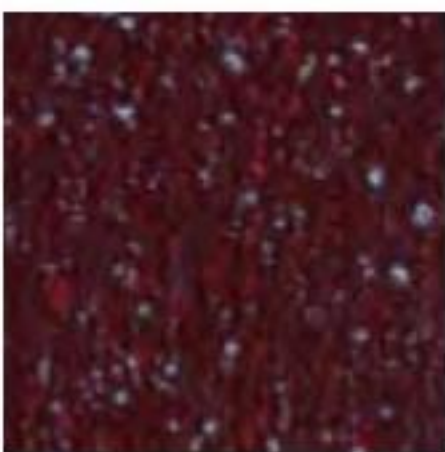
132
Cold grey



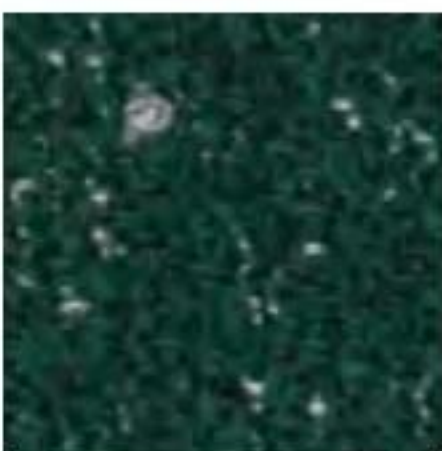
162
Charcoal



792
Navy blue



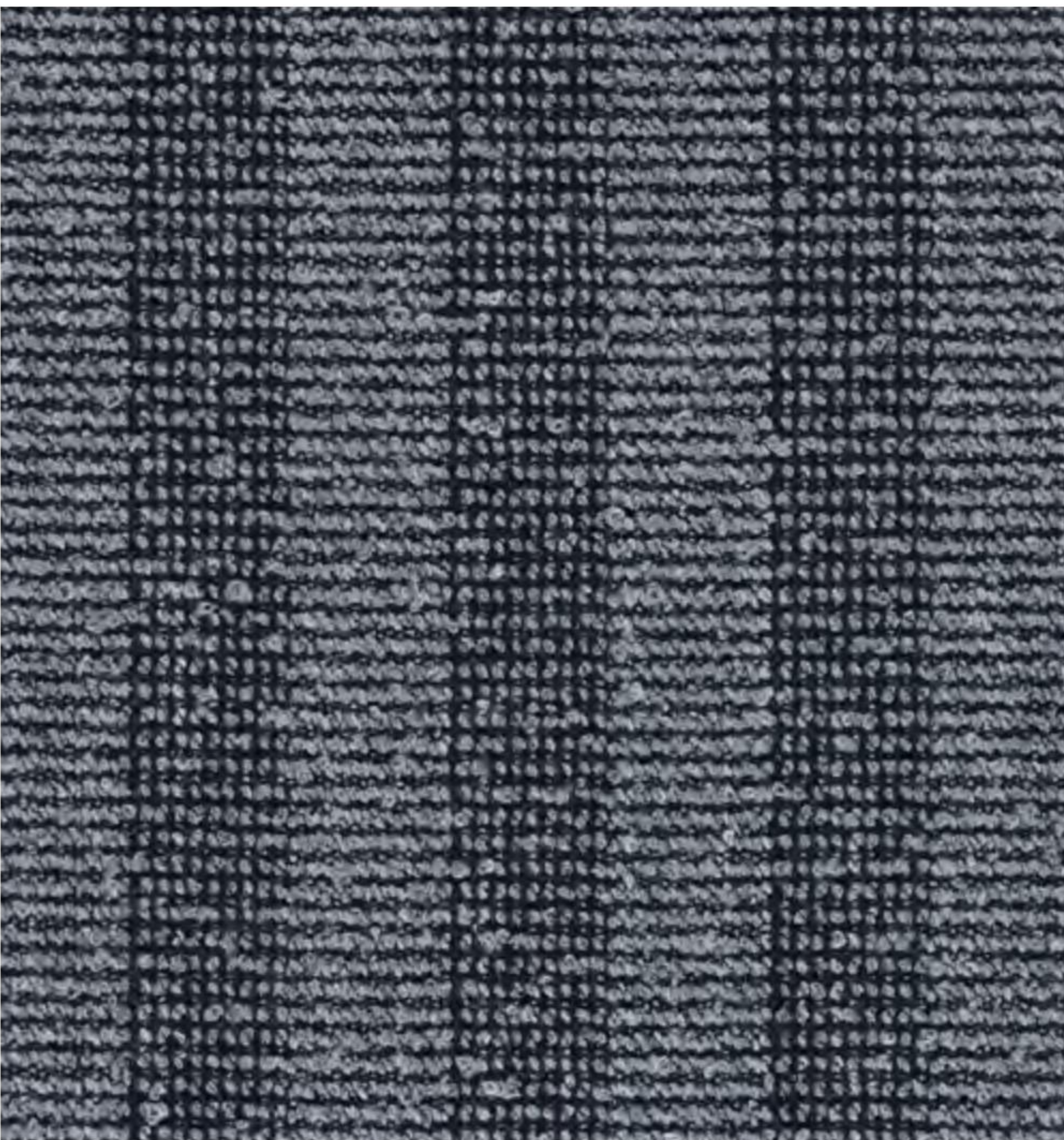
582
Dark red



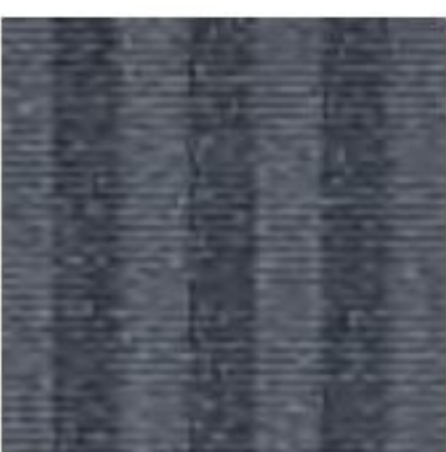
972
Ancient green

PULSAR

Fabric Group 5



About	Bouclé combined with stripes, creating a pulsing pattern.
Application	A C D E
Composition	90% wool, 8% polyamide, 2% polyester
Martindale	100.000
Environment	Sustainable resource
Flame resistance	BS 5852 part 1, DIN 4102 B2, EN 1021-1/2, IMO FTP Code, 2010 Part 8, NF D 60 013, UNI 9175 1IM, US Cal. Bull., 117-2013, ÖNORM B1/ Q1, BS 5852 Crib 5 with treatment
Pilling	4
Lightfastness	7
More info	Kvadrat.dk
Total no of colours	11



169
Cold grey



179
Charcoal



189
Navy blue

BYRAM

Fabric Group 5



About	Mohair velor with a very close pile that gives a great color depth. Suitable for all upholstery, but not on prominent pipings.
Application	A B C D
Composition	65% wool, 23% cotton, 8% viscose, 4% polyamide
Martindale	70.000
Environment	Sustainable resource
Flame resistance	AS/NZS 1530.3, BS 5852 Crib 5, BS 5852 part 1, BS 5867 part 2 type B, EN 1021-1/2, IMO FTP Code 2010 Part 8, NF D 60 013, UNI 9175 1IM, US Cal. Bull. 117-2013, SN 198 898 5.3 with treatment
Pilling	4-5
Lightfastness	4
More info	kvadrat.dk
Total no of colours	19



361
Clay



171
Dusty blue



391
Dark brown



791
Navy blue



191
Jet black



981
Olive

GRAND MOHAIR

Fabric Group 4



About	Mohair velvet with a tight and elegant pile. Suitable for all upholstery except for dominant pipings.
Application	A B
Composition	100% mohair (pile), 100% cotton (base)
Martindale	+100.000 (Wyzenbeek)
Environment	Oeko-tex
Flame resistance	Cal 117-2013, NFPA 260, Class 1, BS 5852: 2006, clause 11, Crib 5, EN 1021, 1 & 2, IMO A. 652
Pilling	-
Lightfastness	4-5
More info	daw.dk
Total no of colours	36



2001
Camel



9103
Olive



2103
Cognac



2600
Cognac

COMFORT +

Fabric Group 3



About	Microfibre textile with a gentle surface and large colour scale. Anti-static and flame retardant backing.
Application	A B C
Composition	88% polyester, 12% polyethane
Martindale	100 .000
Environment	Oeko-Tex
Flame resistance	BS 5852 Part 1 0,1 Cigarette & match, BS EN 1021 1&2 Cigarette and Match, BS EN 1021-1 Cigarette, ÖNORM B 3825-B2-3800-Q1 UK, NF P 92-503 M3, CA TB 117-2013
Pilling	5
Lightfastness	5-7
More info	gabriel.dk
Total no of colours	77



1161
Cold grey



9084
Camel



61002
Light sand



1153
Deep red



0005
Clay



8397
Olive



0049
Charcoal



9075
Dark blue



1160
Dusty blue



61013
Dark brown



0018
Ancient green



0034
Ocean

GRID

Fabric Group 2



About	Special union between linen, polyester and polyamide gives a naturally flame retardant technical fabric with beautiful natural colourways.
Application	A B C D
Composition	67% polyamide, 17% linen, 16% polyester
Martindale	50.000
Environment	Oeko-Tex
Flame resistance	BS 5852 Part 0+1
Pilling	4
Lightfastness	5-6
More info	almedahls.se
No of colours	24



8
Light sand



87
Clay



77
Dark brown



80
Cold grey



83
Charcoal



7
Camel



84
Dusty blue

MERIT

Fabric Group 2



About	Innovative textile made of 76% recycled polyester. Out-spoken yet harmonious surface structure in dual colours.
Application	A B C
Composition	76% recycled polyester, 24% new polyester
Martindale	100.000
Environment	Greenguard Certification
Flame resistance	BS 476 part 7 + 6 with treatm, BS 5852 Crib 5 with treatment, BS 5852 part 1 with treatment, EN 1021-1/2, US Cal. Bull. 117-2013
Pilling	4
Lightfastness	7
More info	kvadrat.dk / maharam.com
Total no of colours	43



16
Cold grey



12
Dusty blue



04
Jet black



17
Ocean



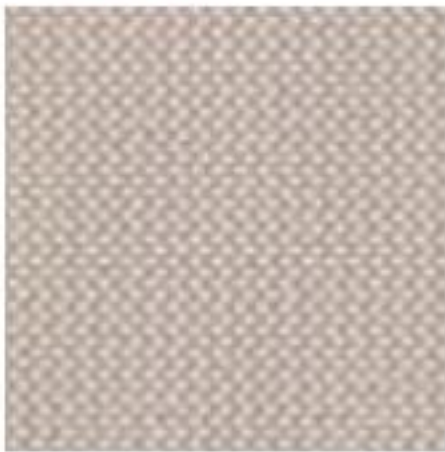
39
Deep red



30
Powder nude



33
Cognac



29
Light sand

OAK SOAP



About Soap treatment is a finish that leaves the surface as raw and natural as possible. The natural oils of the soap gently seal the wood and gives it some stain resistance, however a new soap treatment must be applied from time to time to maintain the appearance. Soaped oak is light when new and darkens over time. Oak has a relatively open surface with a visible grain structure, where beautiful flecking is an effect that can naturally occur in solid oak.

OAK OILED



About Oil treatment enhances the warm tones of oak. The oil used is a clear, natural oil with beeswax. This seals the surface to make it water and stain resistant, thus minimising any visible marks. The oil is absorbed into the wood and creates a smooth surface with a silky touch. Over time, the oil will dry out and new oil must be applied to avoid a dull surface. Oak has a relatively open surface with a visible grain structure. Beautiful flecking is an effect that can naturally occur in solid oak.

OAK LACQUERED



About European oak. A light lacquer treatment partially fills the grain, so the wood structure can be seen on the surface. Oak has a relatively open surface with a visible grain structure. This light lacquer treatment is gentler than a dense lacquer, consequently scratches will not be easily exposed. The wood itself has a nice tactile feel and the natural ageing over time will be more beautiful. A delicate white pigment is added to the lacquer to maintain the light appearance of the oak. Flecking is a lovely effect that can naturally occur in solid oak.

SMOKED OAK, OILED



About European oak. Smoked oak with oil treatment is only used for solid wood. The oak is fumed in special steam that darkens the surface and makes the colour browner. Different parts of the solid oak absorb the fume to different degrees and colour differences will naturally occur. After fuming, the oil treatment further enhances the warm tones of the oak. The oil used is a clear, natural oil with beeswax. This seals the surface to make it water and stain resistant, thus minimising any visible marks. Over time, the oil will dry out and new oil must be applied to avoid a dull surface. Beautiful flecking is an effect that can naturally occur in solid oak.

SMOKED OAK STAINED, LACQUERED



About European oak. Smoked oak stained is a stain treatment that resembles the colour of smoked oak. It is used in furniture where the natural variation in wood requires a more harmonious result than what fumed smoked oak can offer. Frederica uses a stain solution that enhances the warm tones of the oak and reveals the natural wood structure. After staining, the wood is covered with a delicate layer of lacquer. As a result, smoked oak stained is easy to maintain and able to resist stains and water quite well.

GREY OAK STAINED, LACQUERED



About European oak. A stain treatment that reveals the wood structure whilst adding grey tones to the surface. After staining, the wood is covered with a delicate layer of lacquer. As a result, grey oak stained is easy to maintain and able to resist stains and water quite well.

LIGHT GREY OAK STAINED, LACQUERED



About European oak. A stain treatment that reveals the wood structure whilst adding light grey tones to the surface. After staining, the wood is covered with a delicate layer of lacquer. As a result, light grey oak stained is easy to maintain and able to resist stains and water quite well.

BLACK LACQUERED



About Black lacquer in RAL 9005 colour. After the black lacquer is applied to oak or ash, the grain structure of both will be visible. Applied to beech, the surface structure becomes more harmonious, where the visible grain structure is limited.